



Center for Literacy Education, Advancement, and Research

October 31, 2024

Wichita State University

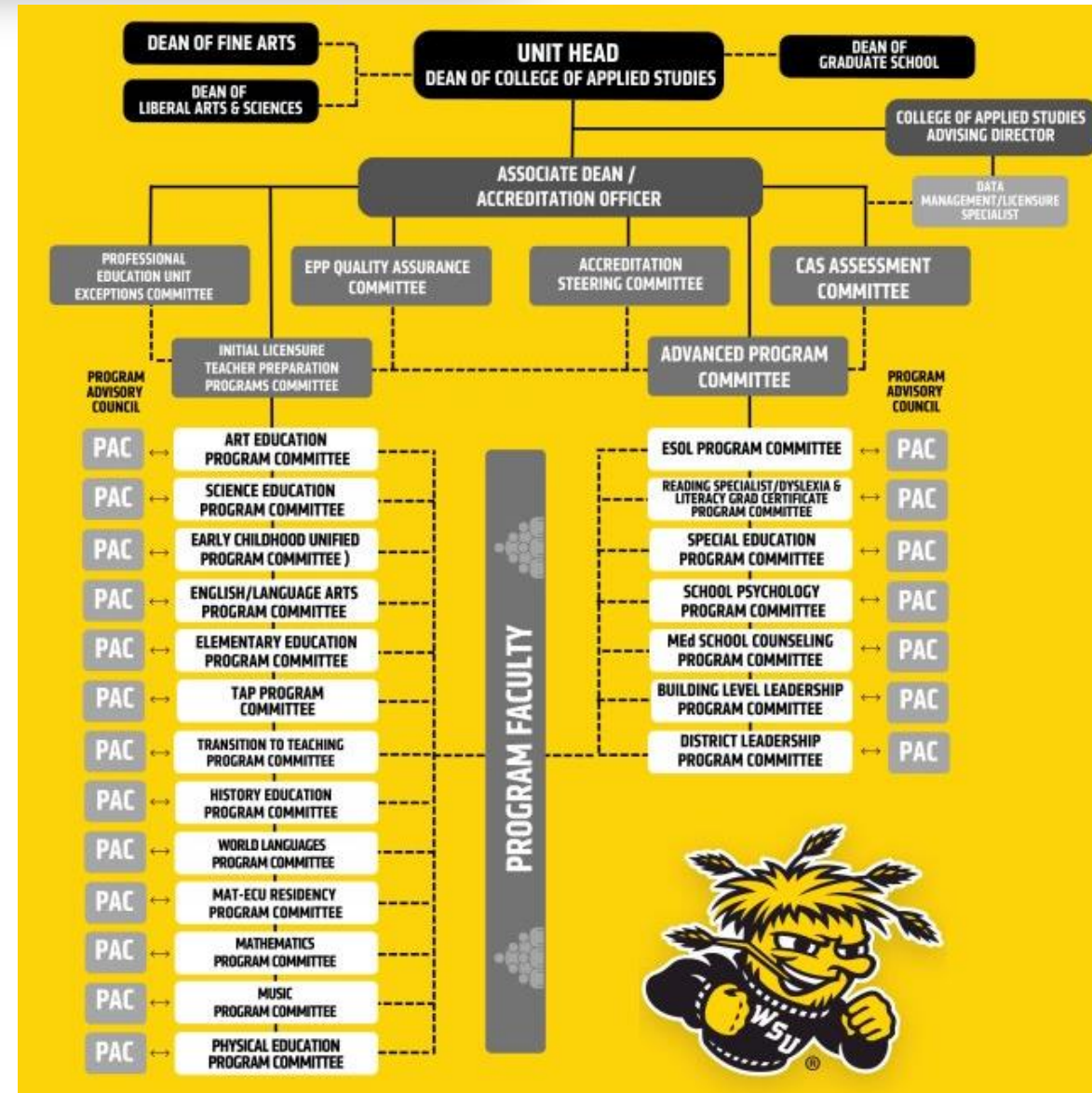
- Public, Urban-serving, Research Institution
 - \$402 million in research grants awarded in 2023
 - Most affordable research university in the region
- WSU Innovation Campus
 - 20+ national and international companies
 - GoCreate Makerspace
- Applied Learning for every major
- Top four-year transfer destination for Kansas college students for 12 straight years



1. Provide an **accessible, affordable and impactful higher education** for all Kansans.
2. Provide **relevant applied learning experiences** that match the needs of industry, agency and community partners.
3. Elevate Wichita State as a **premier, urban public research university** in the United States.

WSU's Professional Education Unit

- WSU's College of Applied Studies and its dean have been designated **primary authority and responsibility for preparation of school personnel** through its Professional Education Unit.
- **Internal and external stakeholders are fundamental** to the decision-making relevant to programs for the preparation of school personnel.
- Components of Unit Governance
 1. Program committees
 2. Program Advisory Councils
 3. Unit Head
 4. Unit Committees
 5. Program Faculty



WSU Initial Licensure Programs

School of Education (SOE)

- Elementary Education
- Early Childhood Unified
- Middle/Secondary (5t-12th)
 - Math, Science, English Language Arts, History/Government
- Physical Education K-12 Transition to Teaching
- World Languages

Teacher Apprenticeship Pathways, Literacy and Special Education (TALS)

- Teacher Apprentice Program
- MAT-ECU/EEU

School of Music*

- Music Education

School of Art, Design and Creative Industries (ADCI)*

- Art Education

School of Education (SOE)

- English to Speakers of Other Languages (ESOL)

Intervention Services and Leadership in Education (ISLE)

- Building Leadership
- District Leadership
- School Psychology
- School Counseling

Teacher Apprenticeship Pathways, Literacy, and Special Education (TALS)

- Special Education (High Incidence, High Incidence Alternative Certification, Low Incidence, ECU)
- Reading Specialist

Education Programs – Strong Foundation

- Professional Development School (PDS) Partnership with the **Wichita Public Schools**
- Variety of community partnerships enrich student learning experience.. **the city is our classroom.**
- All programs offer students **substantial, innovative and applied learning and leadership experiences**, preparing them for successful careers.
- Engage students in **high-impact educational practices**, such as faculty-mentored research, community-based learning experiences, and collaborative assignments and projects.



Students Involved in Faculty-Mentored Research and Professional Conferences



AD CI wsu_adci • Follow

AD CI wsu_adci Congratulations to Dr. Lori Santos, Associate Professor of Art Education, on being awarded the title of 2023's Outstanding Higher Education Art Educator of the Year by the Kansas Art Educator Association (KAEA)! 🌟🌟🌟

Dr. Santos received her Doctorate of Philosophy in Art Education, minor in art history with an emphasis in Pre-Colombian, Latin American, and Native American art from the University of North Texas. In 2019, she attended the School of Art Leaders and began serving on the Task Force for Equity, Diversity, and Inclusion with the National Art Education Association. She has led several small groups of Wichita State art students to Peru and

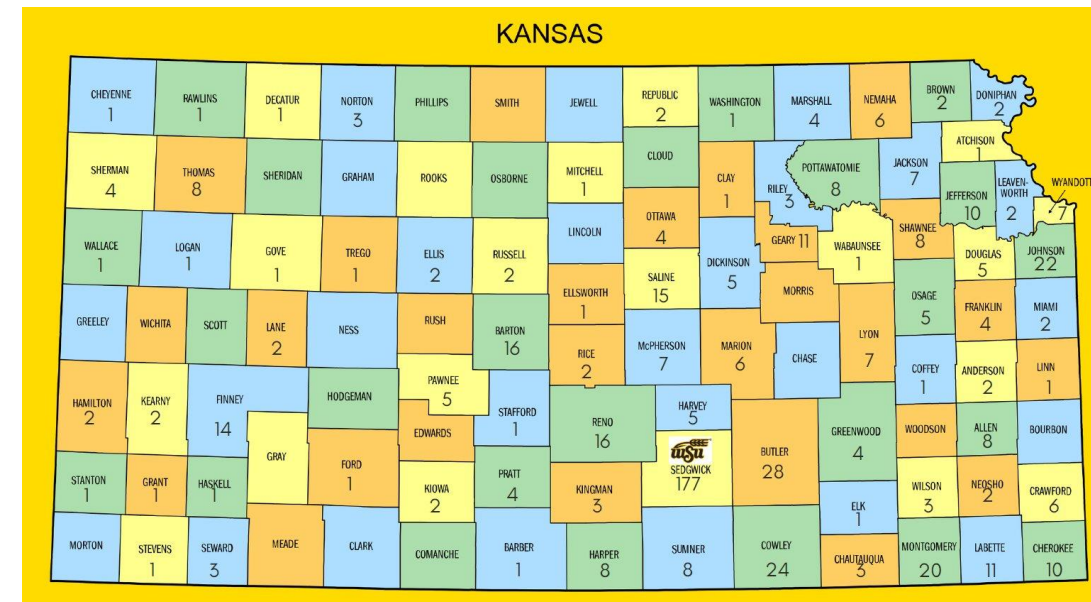
88 likes
October 9, 2023



2023 Kansas Association of Teachers of English (KATE) Conference. Session titled, *"You've Got to Read (and Teach) this Book: 2023 Award-Winning Adult Literature from the American Library Association"*

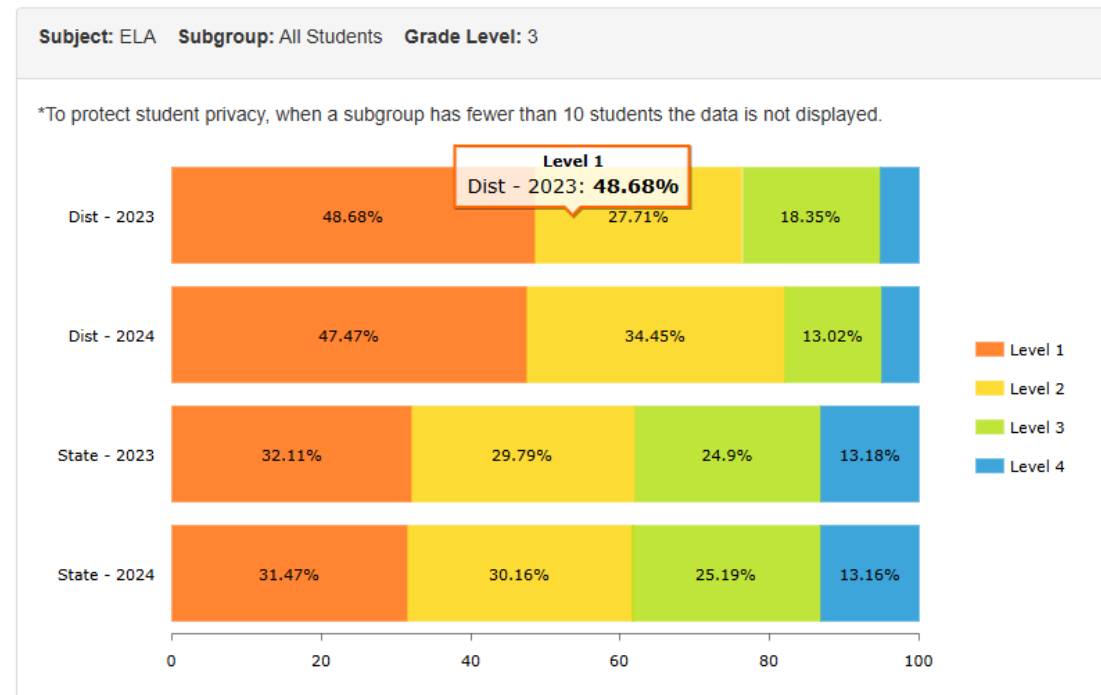
Applied Learning Connections

- Multiple applied learning experiences in PreK-12th grade classrooms.
- **Teacher Apprentice Program™ (TAP)** largest elementary / early childhood program in Kansas with ~700 students
- Example: Candidates plan and implement small group structured literacy “stations” in elementary classrooms as part of their Science of Reading coursework.
- **AmeriCorps Planning Grant**



South-central Kansas 3rd Grade ELA Data

Longitudinal Performance Level Reports



- USD 259 Wichita Public Schools
 - 79% Level 1 / Level 2 (2023)
 - 76.5% Level 1 / Level 2 (2024)
- USD 465 Winfield School District
 - 74.6% Level 1 / Level 2 (2023)
 - 65% Level 1 / Level 2 (2024)
- USD 208 Hutchinson Public Schools
 - 76.4% Level 1 / Level 2 (2023)
 - 81.9% Level 1 / Level 2 (2024)

- **Level 1** indicates that a student shows a limited ability to understand and use the English Language arts skills and knowledge needed to be academically prepared for postsecondary success.
- **Level 2** indicates that a student shows a basic ability to understand and use the English Language arts skills and knowledge needed to be academically prepared for postsecondary success.

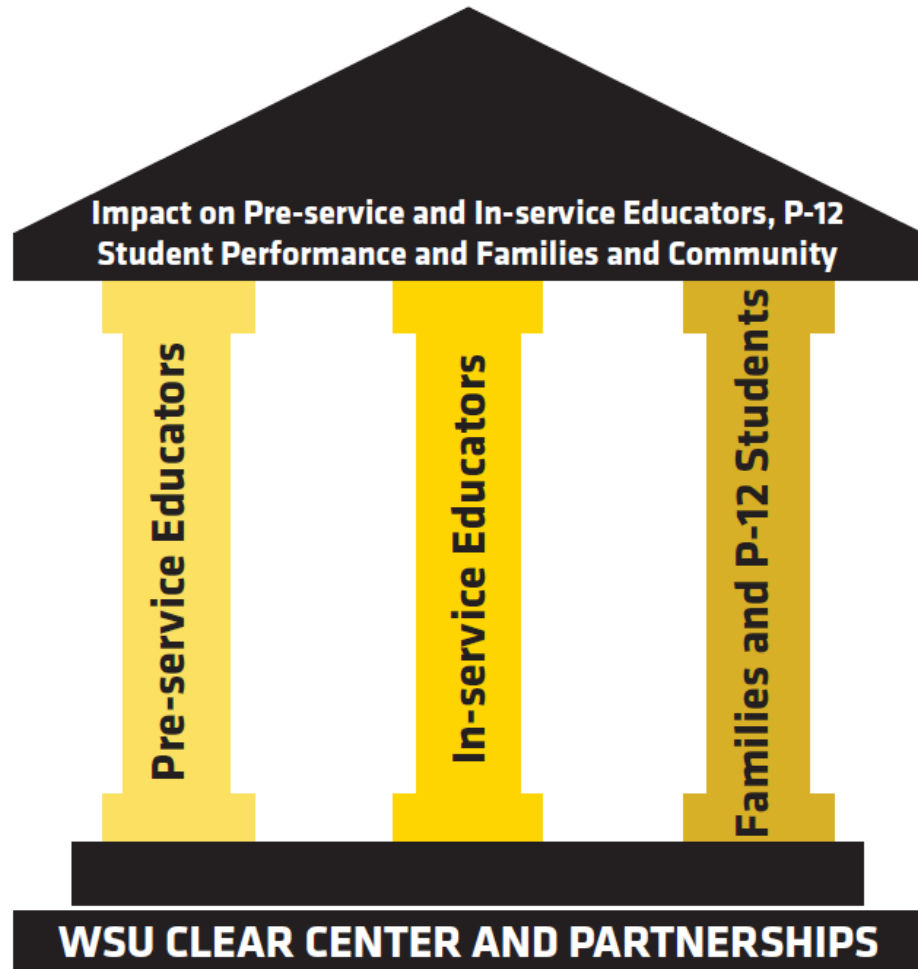
The Center for Literacy Education, Advancement, and Research (CLEAR) at Wichita State University



CLEAR Vision: Empowering every Kansas child to read proficiently for personal, economic, and societal benefit.

- **Impact on Students:** CLEAR's alignment with the Kansas Blueprint for Literacy, aiming for 90% of students reading at grade level by 2033.
- **Impact on Educators:** Evidence-based professional development and literacy coaching aligned with IDA and KSDE standards prepare educators and other school personnel to apply effective literacy instruction.
- **Impact on Families & Communities:** Wichita State University's unique position as Kansas's only urban-serving public research university, in addition to serving our rural and suburban communities through long-standing partnerships, provides a robust foundation for impactful literacy programs.

CLEAR Framework and Goals



- **Education, Coaching and Applied Learning Experiences for Pre-service Educators to apply the Science of Reading**
 - Impact on Pre-service Educators through Science of Reading Micro-credentials and Accredited Educator Preparation Programs
- **Field-based and Virtual Coaching and Professional Development for In-service Educators and other School Personnel**
 - Impact with In-service Educators through Science of Reading Micro-credentials, Consultations, and Accredited Programs for Education Personnel
- **Empower Families and P-12 Students through evidence-based assessment, evaluation, intervention, and advocacy**
 - Impact with Families and Community through Services, Assessments, Evaluations, and Outreach

Pillar I: Pre-service Educators

- CLEAR supports pre-service educator programs, incorporating Science of Reading-aligned micro-teaching and simulation labs.
- WSU's curriculum is firmly grounded in evidence-based practices from the Science of Reading.
- Pre-service educators at WSU engage in extensive classroom and fieldwork in local schools.
- We continuously assess the impact of our programs through partnerships with local school districts and alumni and employer surveys, further reinforcing our commitment to high-quality teacher preparation.



Pre-service Educators: Enhancements

- Enhance WSU Paid Applied Learning Opportunities
 - Undergraduate Students
 - Graduate Students
- Creation of a Virtual Simulation Lab
 - Partnership with WSU's Child Development Center (CDC) and Speech-Language Hearing Clinic
- Development of a Para-Educator Literacy Preparation and Training Pathway

1

MICRO-TEACHING

Involves pre-service or in-service educators delivering structured lessons to peers, who act as students.

2

ROLE-PLAYING & TABLETOP EXERCISES

Educators explore different perspectives in literacy instruction or collaboratively solve problems using tabletop scenarios.

3

SIMULATION WORKSHOPS

Educators participate in realistic scenarios that mimic classroom situations, such as differentiating instruction.

4

COLLABORATIVE CASE STUDIES

In-service educators work in teams to analyze literacy challenges and apply evidence-based solutions.

5

EXPERIENTIAL LEARNING ACTIVITIES

Activities such as immersive role-playing & scenario-based problem-solving.

6

VIRTUAL SIMULATIONS

Technology-based scenarios where educators interact with virtual classrooms, practicing structured literacy strategies.

Pillar II: In-service Educators

- Science of Reading and Structured Literacy principles incorporated in graduate coursework (Reading Specialist, School Psychology, Special Education)
- Clinical and Field-Based Experiences, Simulations, Case Studies
- Collaborative Partnerships
- Professional Learning Courses
 - **KBOR-sponsored, system-wide micro-credential** will also be offered, providing educators with an opportunity to enhance their skills in a targeted area of literacy.



In-service Educators: Coaching

- Wichita State's **Kansas Mentor & Induction Center (KMIC)** will integrate virtual and on-site coaching options.
- Coaching with innovative **Generative AI** technologies, guided by a new Generative AI Literacy Task Force and aligned with the Kansas Blueprint for Literacy goals.

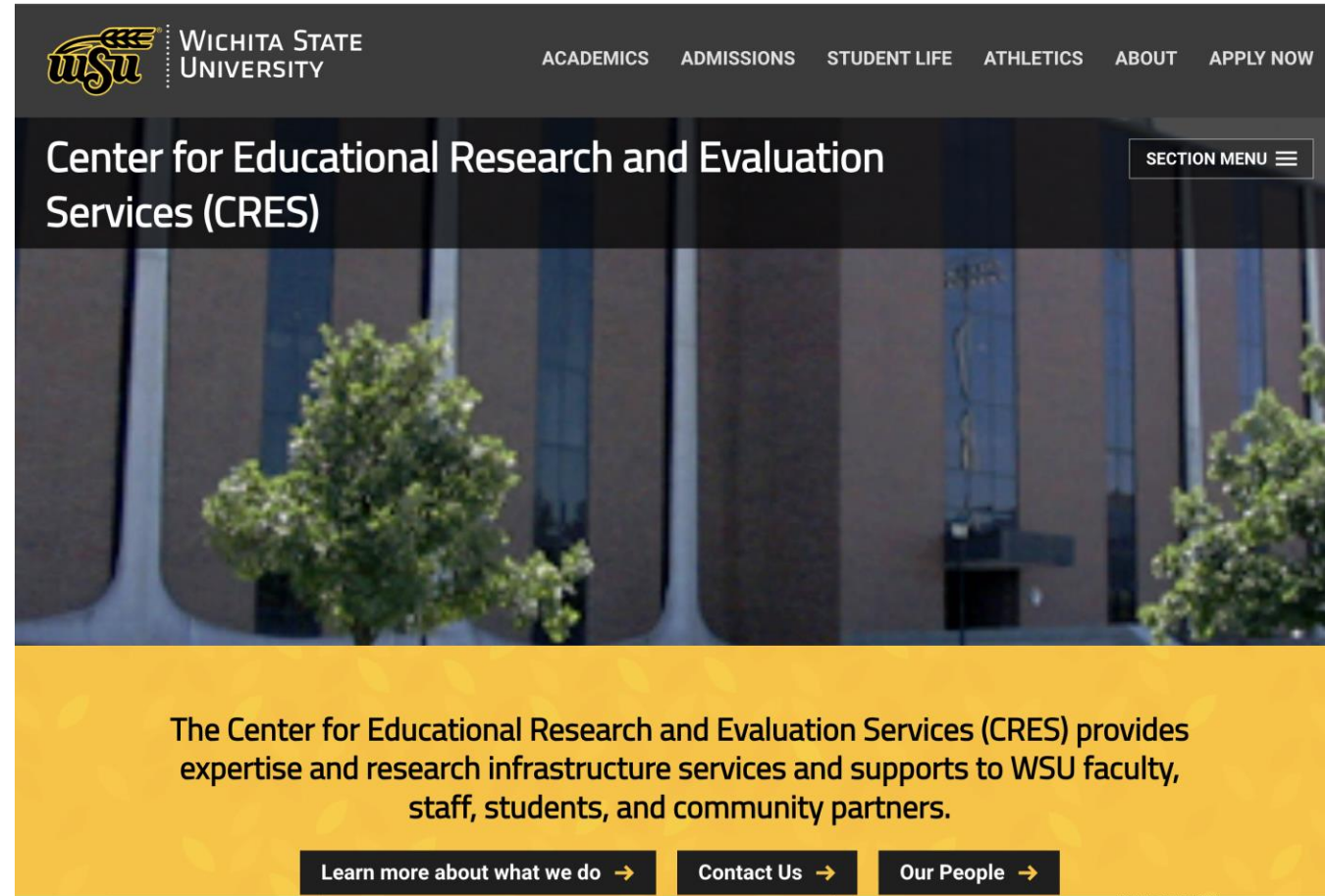


Pillar II: District Support

- CLEAR Assessment and Evaluation Services through Applied Learning
 - **School Psychology** students conduct screenings, diagnostic assessments, and progress monitoring, interpreting data to guide interventions.
 - **Educational Leadership** students support school-wide literacy initiatives by designing assessment frameworks and data systems for continuous improvement.
 - **Reading Specialist** students engage in one-on-one assessments and small-group interventions, delivering data-informed instruction aligned with structured literacy principles.
 - **Special education** students focus on individualized interventions, working alongside educators to meet diverse learning needs.
 - **Speech-language pathology** students assess and support phonological awareness, language comprehension, and oral and written language development.

Pillar II: District Support

WSU's **Center for Research and Evaluation Services (CRES)** supports districts with literacy assessment and evaluation by providing technical assistance in data collection, analysis, and reporting.



The screenshot shows the website for the Center for Educational Research and Evaluation Services (CRES) at Wichita State University. The top navigation bar includes the WSU logo and links for ACADEMICS, ADMISSIONS, STUDENT LIFE, ATHLETICS, ABOUT, and APPLY NOW. The main header features the text "Center for Educational Research and Evaluation Services (CRES)" and a "SECTION MENU" button. Below the header is a large image of a building with a tree in the foreground. A yellow banner at the bottom contains the text: "The Center for Educational Research and Evaluation Services (CRES) provides expertise and research infrastructure services and supports to WSU faculty, staff, students, and community partners." At the very bottom, there are three buttons: "Learn more about what we do →", "Contact Us →", and "Our People →".

Pillar III: Partnerships

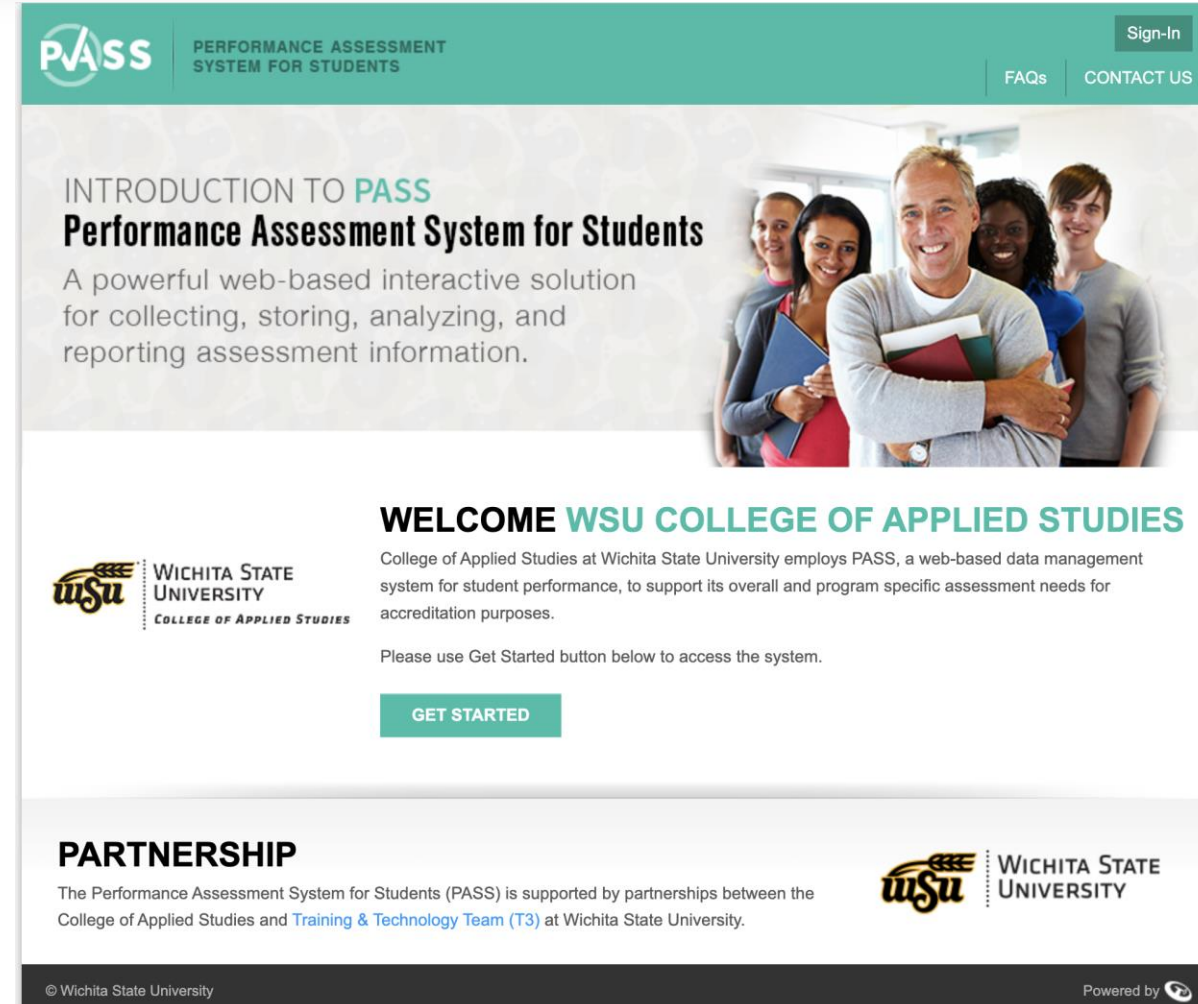
- CLEAR will leverage diverse partnerships to enhance literacy outcomes for PreK-12 students through high-quality, data-driven support and resources across Kansas.
 - School and District Partners
 - KBOR Institutions and Washburn University & Literacy Centers
 - Community Colleges and Independent Universities
 - Service Centers: ESSDACK
 - WSU Internal Partners – Expanded collaborations
 - Educational, Youth and Family-serving Organizations
 - Phillips Fundamental Learning Center
 - Storytime Village

Pillar III: Community Outreach & Family Support

- Critical role of family engagement in literacy - CLEAR's outreach programs
 - **Parent workshops** teaching strategies for home reading development in the birth to 3rd grade age range offered in locations such as community centers, schools, and libraries,
 - **Structured literacy kits** with books and activities paired with a virtual parent training component (e.g., **podcast**, YouTube video, etc.)
 - **WISE Clinic**: free mental health counseling and play therapy services offered through Counseling program
 - **Phillips Fundamental Learning Center**: free monthly parent workshops, assessment and evaluation services, structured literacy instruction

Evaluation and Continuous Improvement

- WSU's team of highly qualified professionals with extensive knowledge and experience in the field of literacy education.
- Data collection and assessment tools (PASS, CRES) for tracking literacy progress and program effectiveness.
- CLEAR's commitment to continuous improvement, data-driven decision-making, and outcome tracking.



The screenshot shows the PASS website interface. At the top, there is a teal header with the PASS logo and the text "PERFORMANCE ASSESSMENT SYSTEM FOR STUDENTS". On the right side of the header, there are links for "Sign-In", "FAQs", and "CONTACT US". Below the header, there is a main content area with a background image of a group of diverse students and a smiling instructor. The text reads: "INTRODUCTION TO PASS Performance Assessment System for Students. A powerful web-based interactive solution for collecting, storing, analyzing, and reporting assessment information." Below this, there is a section titled "WELCOME WSU COLLEGE OF APPLIED STUDIES" with a sub-header "WELCOME WSU COLLEGE OF APPLIED STUDIES". The text below this section states: "College of Applied Studies at Wichita State University employs PASS, a web-based data management system for student performance, to support its overall and program specific assessment needs for accreditation purposes. Please use Get Started button below to access the system." A teal "GET STARTED" button is prominently displayed. At the bottom of the page, there is a "PARTNERSHIP" section with the text: "The Performance Assessment System for Students (PASS) is supported by partnerships between the College of Applied Studies and Training & Technology Team (T3) at Wichita State University." The WSU logo is also present in the bottom right corner. The footer contains the copyright notice "© Wichita State University" and the text "Powered by" followed by a logo.

