



Enrollment Report

Elaine Frisbie, Vice President for Finance & Administration

March 22, 2023

Kansas Board of Regents
Building a Future for Kansas Families, Businesses and the Economy



Data Collections


The presentation today is made possible by the staff at the institutions who submit their data to the Data, Research and Planning team within the Board of Regents.

Using this information, we develop products such as DegreeStats, the Military Portal, the databooks, and the KHEStats online reporting tool, which is referenced throughout this presentation.

Many thanks to all the staff involved with the data collections.



Kansas Higher Ed Statistics “KHEStats”



Kansas Higher Education Statistics

Profiles

High School

Fall Census

Enrollment

Retention

Transfers

Credentials

Graduation

Student Success Index

Employment & Wages

Tuition

Finance

Resources

Enrollment

Trend Tables
Enrollment Summary
Student Level
Program Type
Residency
Race/Ethnicity
Age Group
Gender
Full-time/Part-time Status
Student Type
Entering Students by Location
Pell Recipients Summary

Trend Charts
Enrollment Summary
Student Level
Program Type
Residency
Race/Ethnicity
Age Group
Gender
Full-time/Part-time Status
Student Type
Entering Students by Location
Pell Recipients Summary

Overview

Glossary and Notes
www.kansasregents.org

Select Institution Type:
Systemwide

Select Institution:
Systemwide Summary

Select Delivery Method:
All Delivery Methods

Select Term:
Academic Year

Select Year:
2022

Select Report Type:
FTE

Select Output Type:
HTML

Reset

Kansas Board of Regents

Enrollment for All Delivery Methods by Full-time Equivalency and Residency
Academic Years 2017 - 2022
Systemwide Summary

		Year							
		2017	2018	2019	2020	2021	2022	1 Year Chg	5 Year Chg
Systemwide	Residency								
System Total	Resident	64,588	64,494	64,470	63,527	60,699	58,588	-3.5%	-9.3%
	Resident - In-District	18,792	17,770	17,118	16,443	14,971	14,295	-4.5%	-23.9%
	Resident - Out-District	20,921	20,885	19,793	18,780	17,566	17,024	-3.1%	-18.6%
	Resident by Exception	3,893	3,882	3,751	3,647	3,191	3,715	16.4%	-4.6%
	Resident by Exception - In-District	^	^	^	^	^	^	-	-
	Resident by Exception - Out-District	203	204	125	137	118	138	16.9%	-32.0%
	Nonresident	29,694	30,086	30,671	30,773	30,337	29,973	-1.2%	0.9%
	Unknown	^	^	^	^	^	^	-	-
	Total	138,225	137,422	135,971	133,337	126,916	123,779	-2.5%	-10.5%

Source: KHEDS Academic Year Collection

^ Indicates a cell has been marked for small-cell protection.
Due to rounding, FTE numbers may not add up to totals.

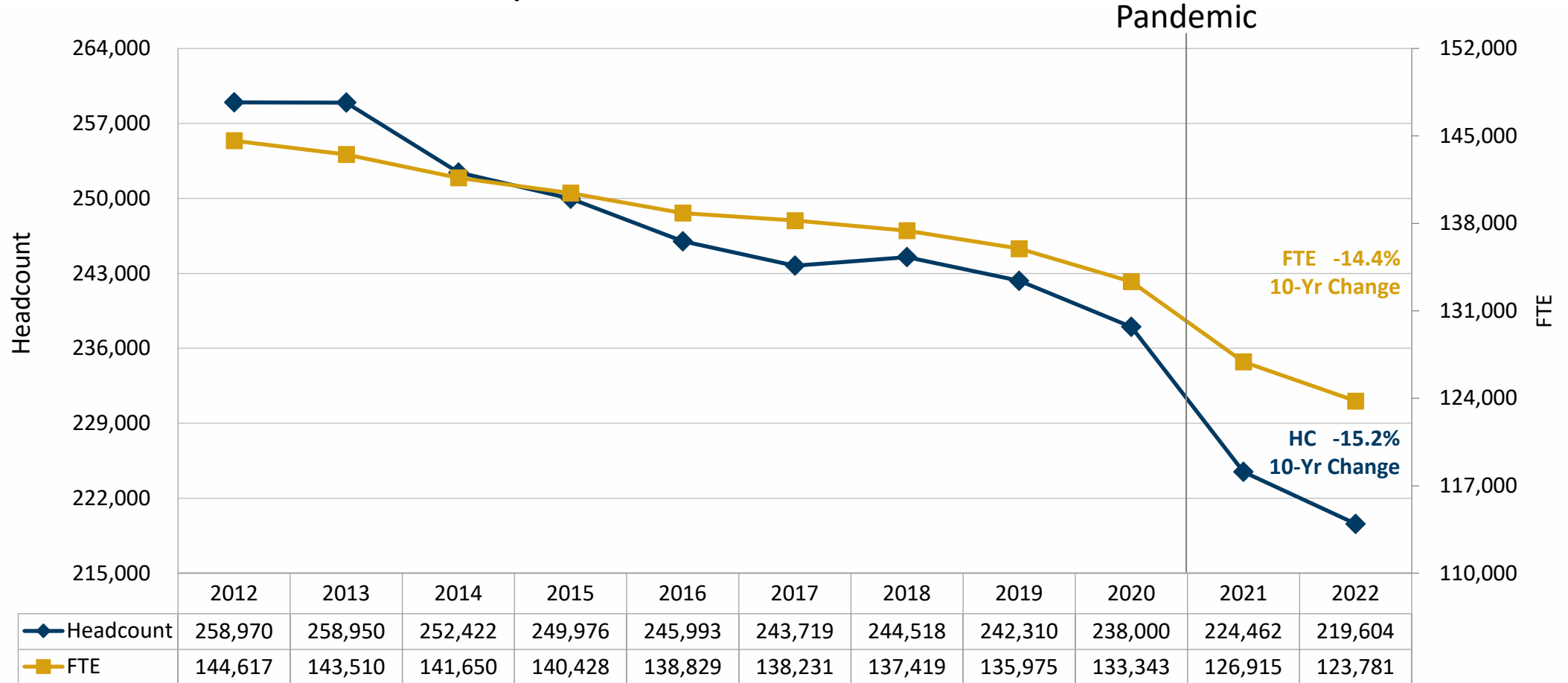


ACADEMIC YEAR ENROLLMENT TRENDS



Academic Year Enrollment

Systemwide Headcount and FTE



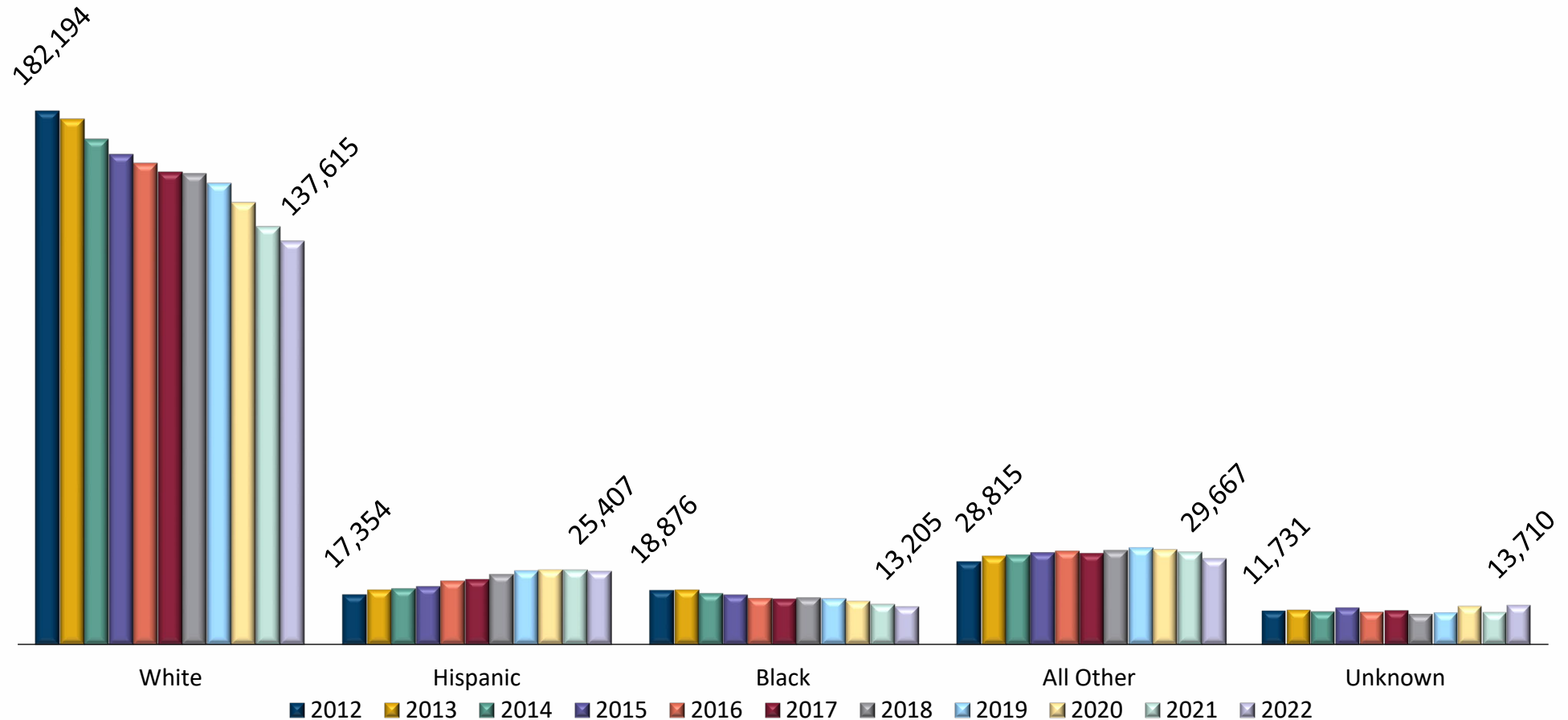
Source: KHEDS Academic Year Collection

More data can be found at stats.kansasregents.org; Enrollment Tab



Academic Year Enrollment

Systemwide Headcount by Race/Ethnicity



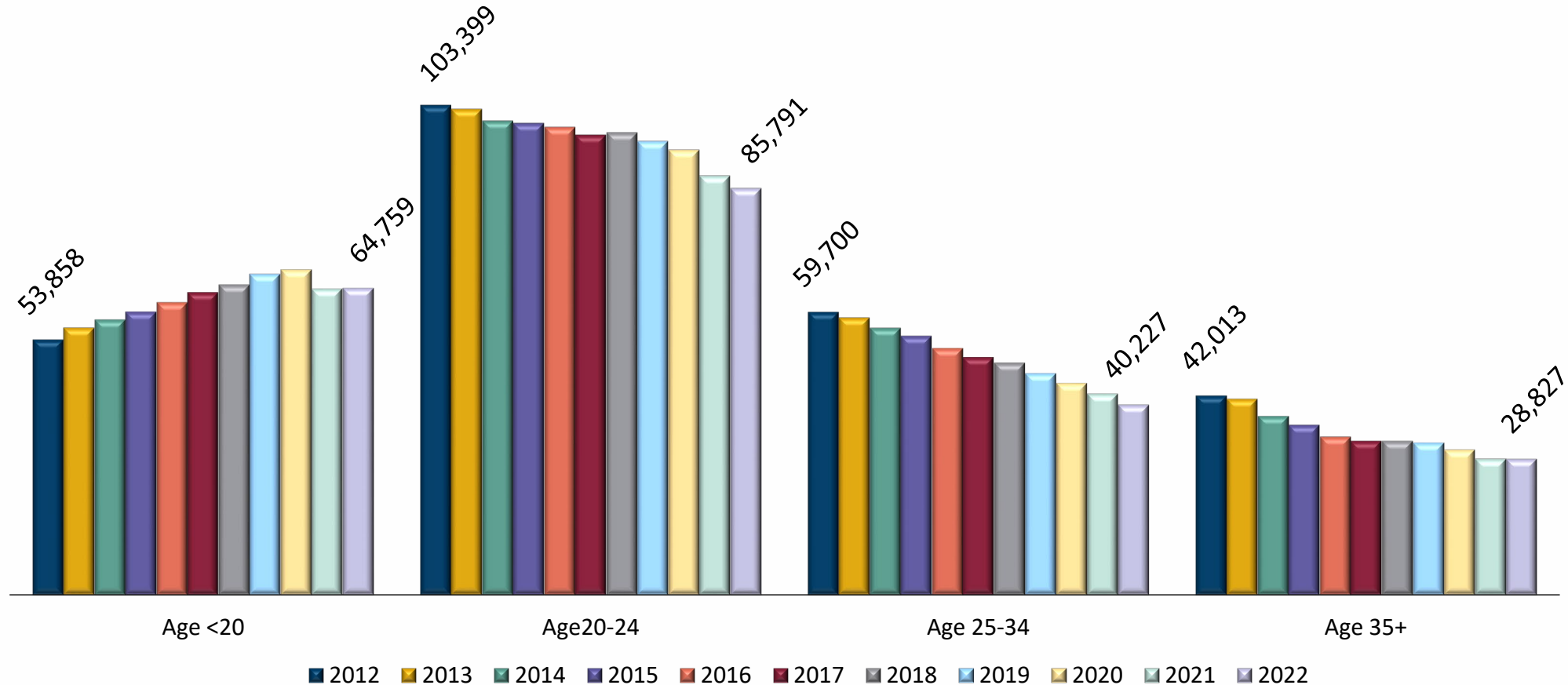
Source: KHEDS Academic Year Collection

More data can be found at [stats.kansasregents.org; Enrollment Tab](https://stats.kansasregents.org/Enrollment)



Academic Year Enrollment

Systemwide Headcount by Age Groups



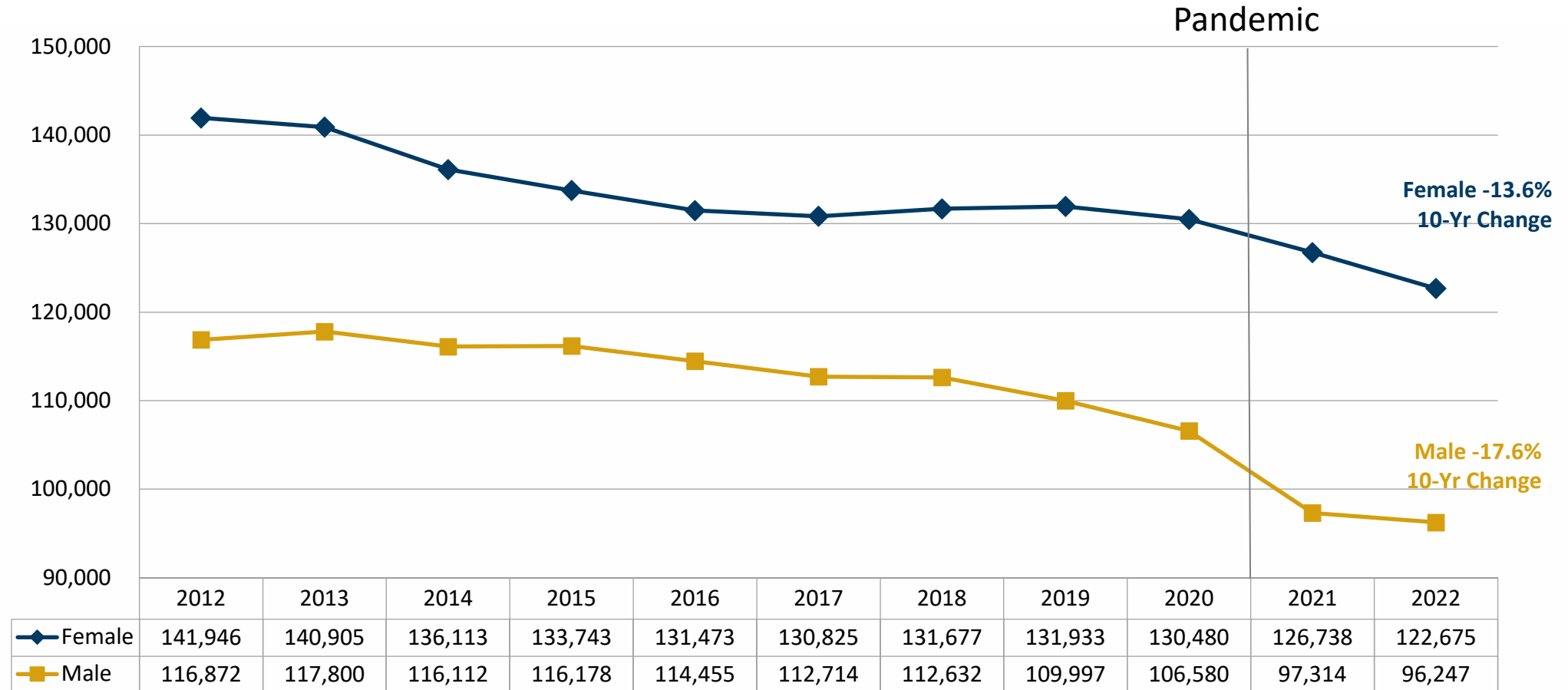
Source: KHEDS Academic Year Collection

More data can be found at [stats.kansasregents.org; Enrollment Tab](https://stats.kansasregents.org/EnrollmentTab)



Academic Year Enrollment

Systemwide Headcount Gender



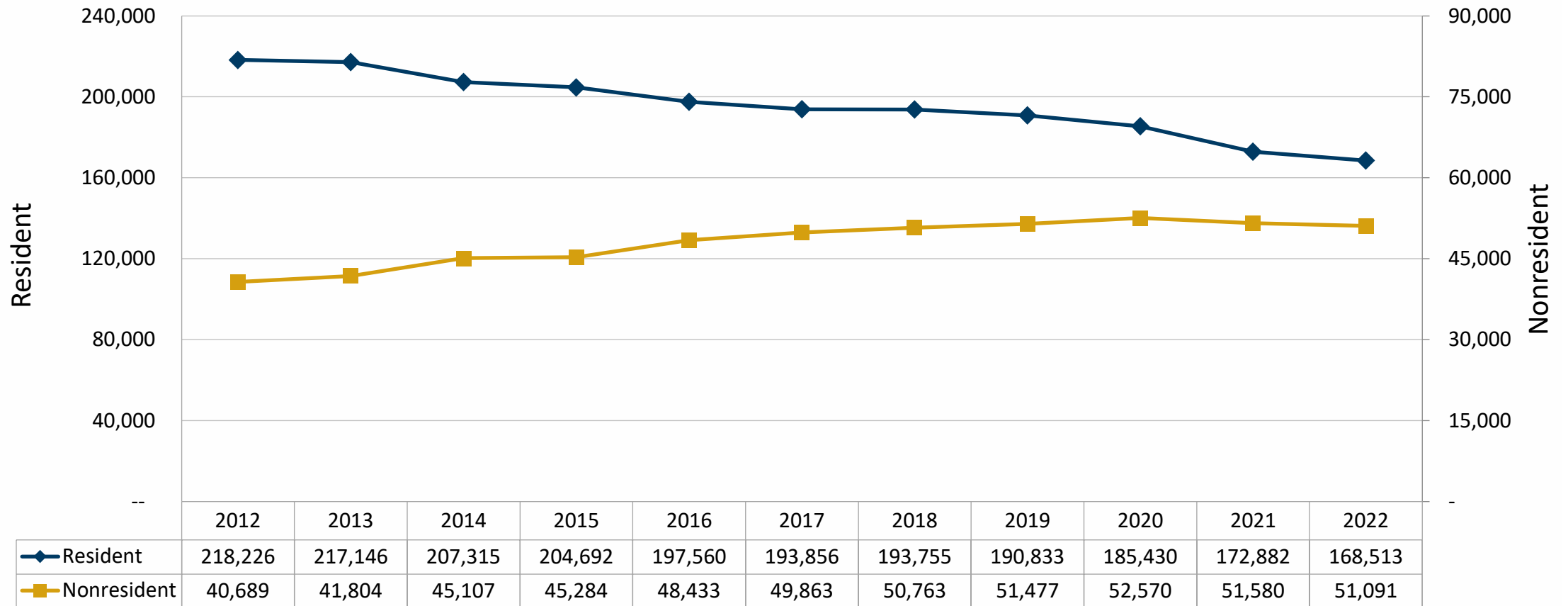
Source: KHEDS Academic Year Collection

More data can be found at [stats.kansasregents.org; Enrollment Tab](https://stats.kansasregents.org/EnrollmentTab)



Academic Year Enrollment

Systemwide Headcount by Residency



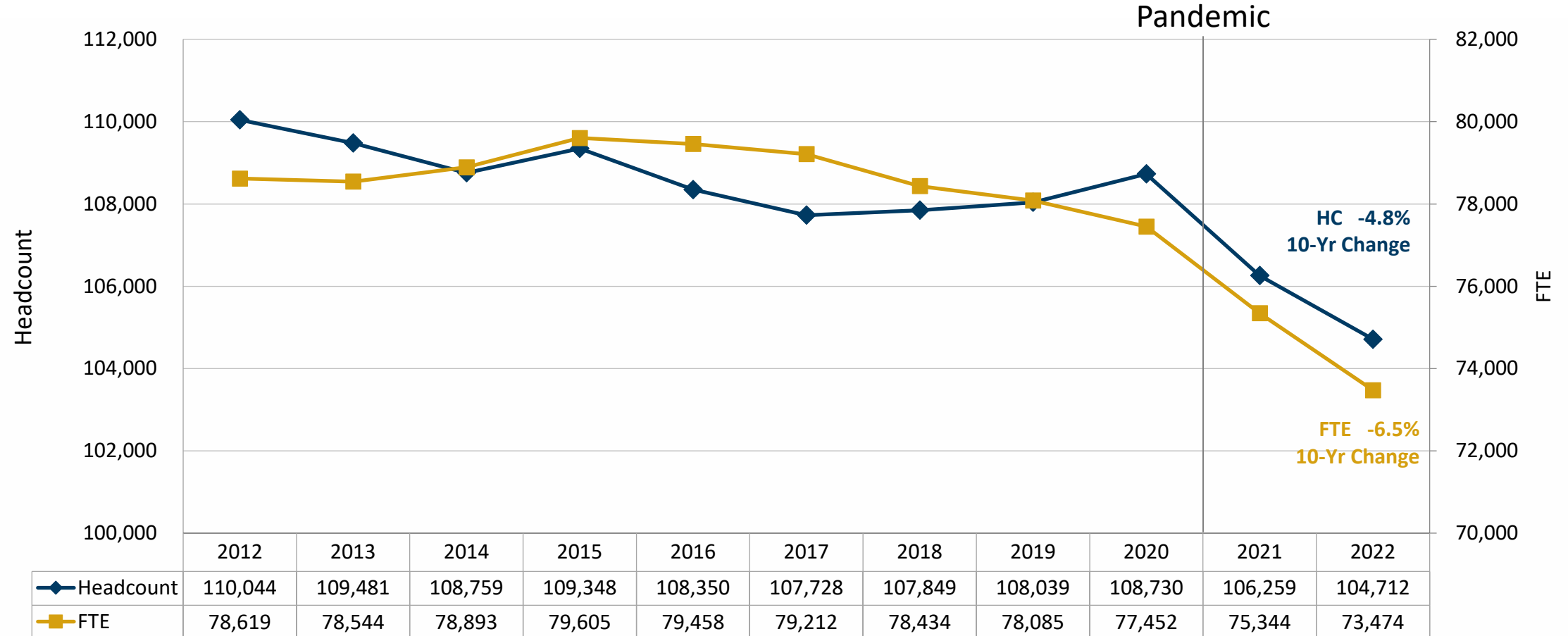
Source: KHEDS Academic Year Collection

More data can be found at stats.kansasregents.org/EnrollmentTab



Academic Year Enrollment

State Universities Headcount and FTE



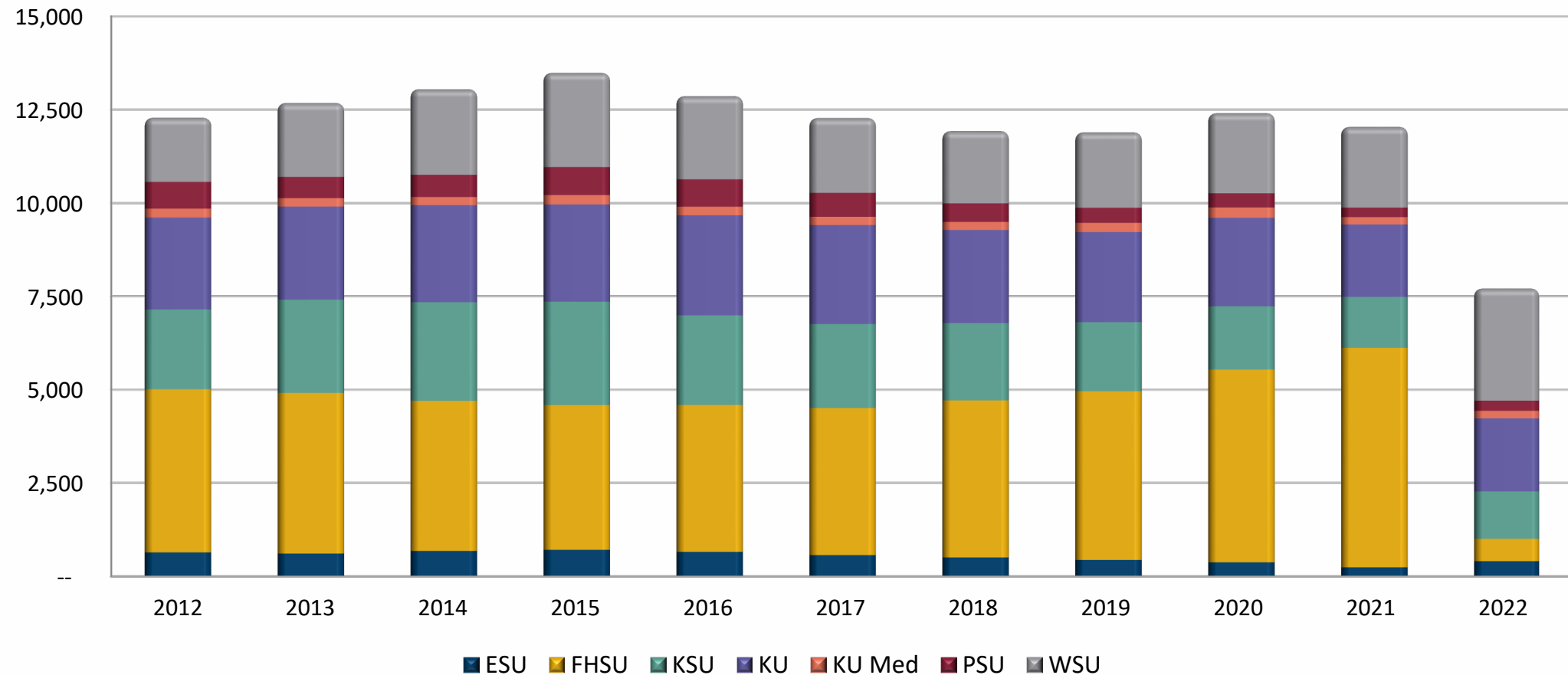
Source: KHEDS Academic Year Collection

More data can be found at stats.kansasregents.org; Enrollment Tab



Academic Year Enrollment

State Universities Headcount – International Students



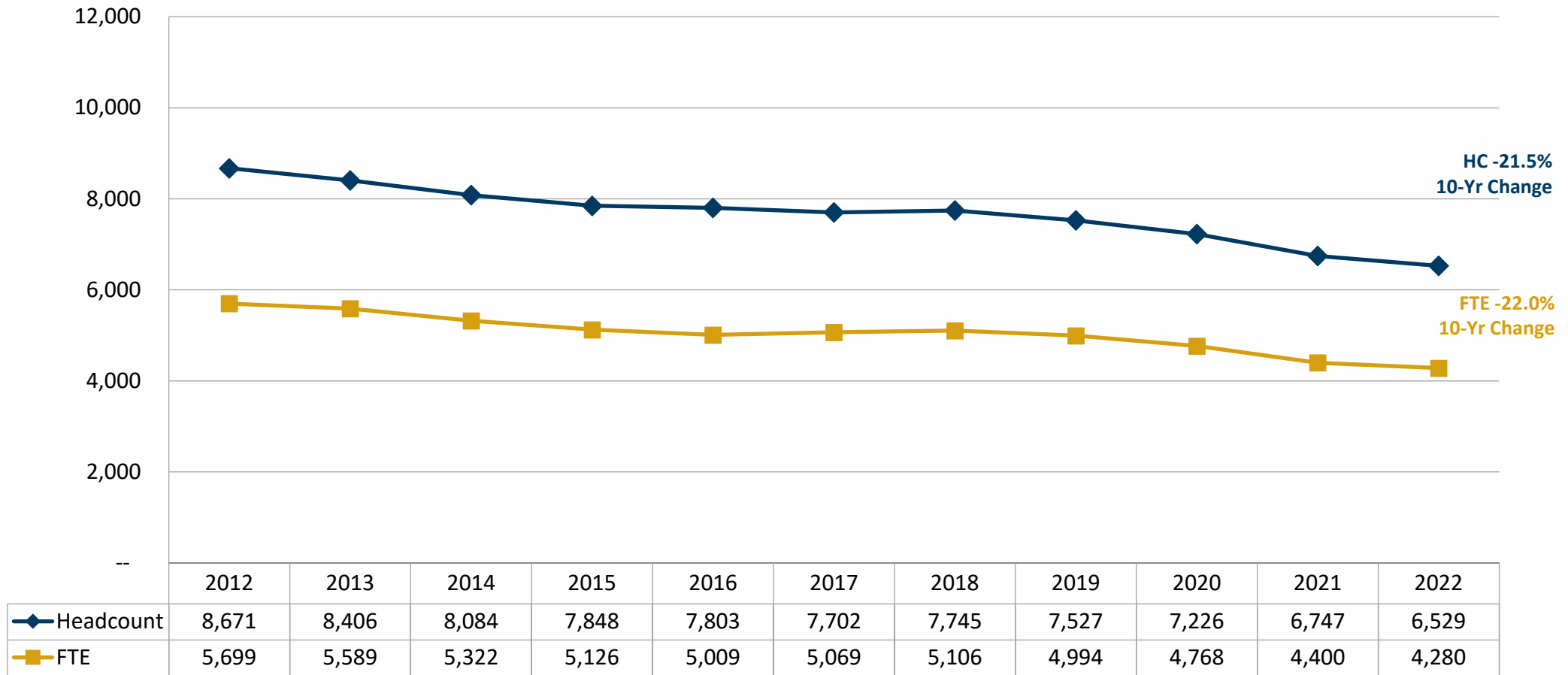
Source: KHEDS Academic Year Collection

More data can be found at [stats.kansasregents.org; Enrollment Tab](https://stats.kansasregents.org/EnrollmentTab)



Academic Year Enrollment

Washburn University Headcount and Full-time Equivalency



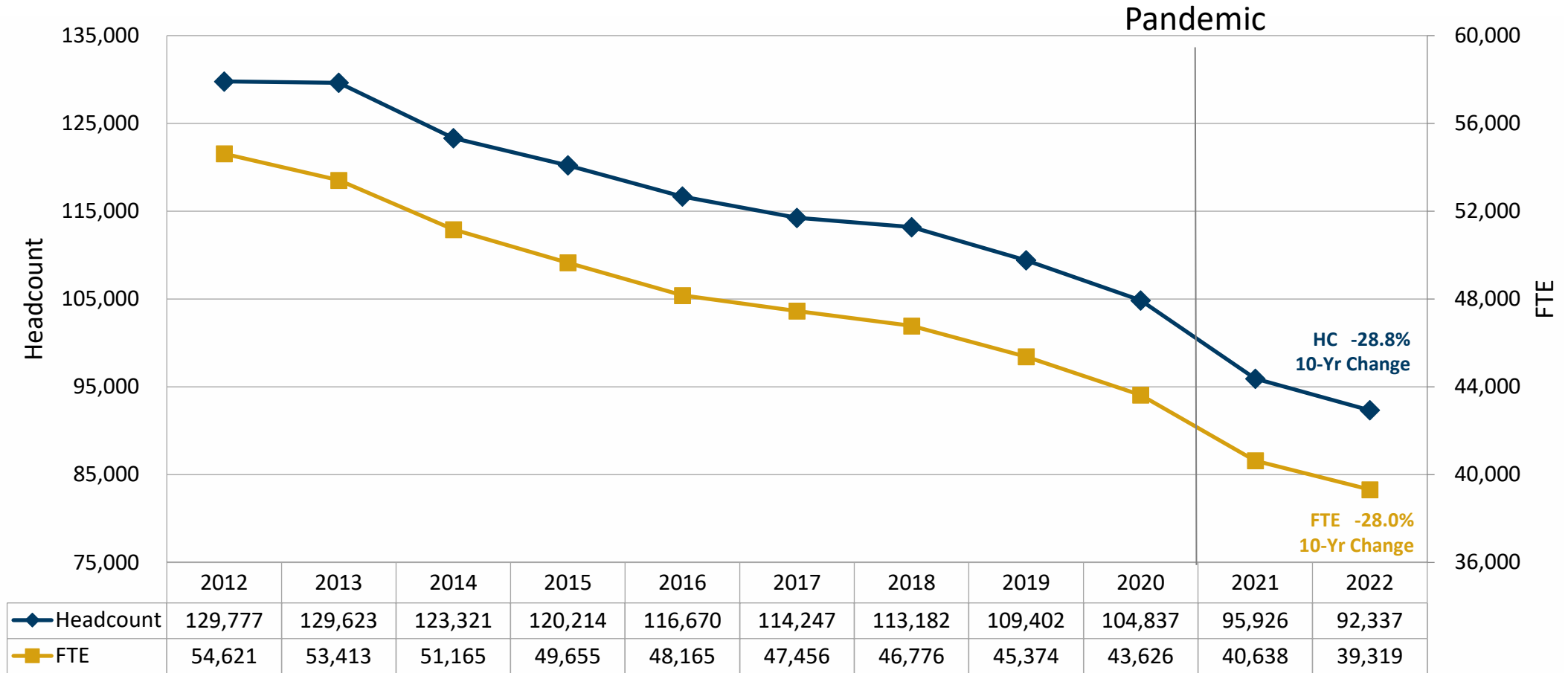
Source: KHEDS Academic Year Collection

More data can be found at [stats.kansasregents.org; Enrollment Tab](https://stats.kansasregents.org/EnrollmentTab)



Academic Year Enrollment

Community Colleges Headcount and Full-time Equivalency



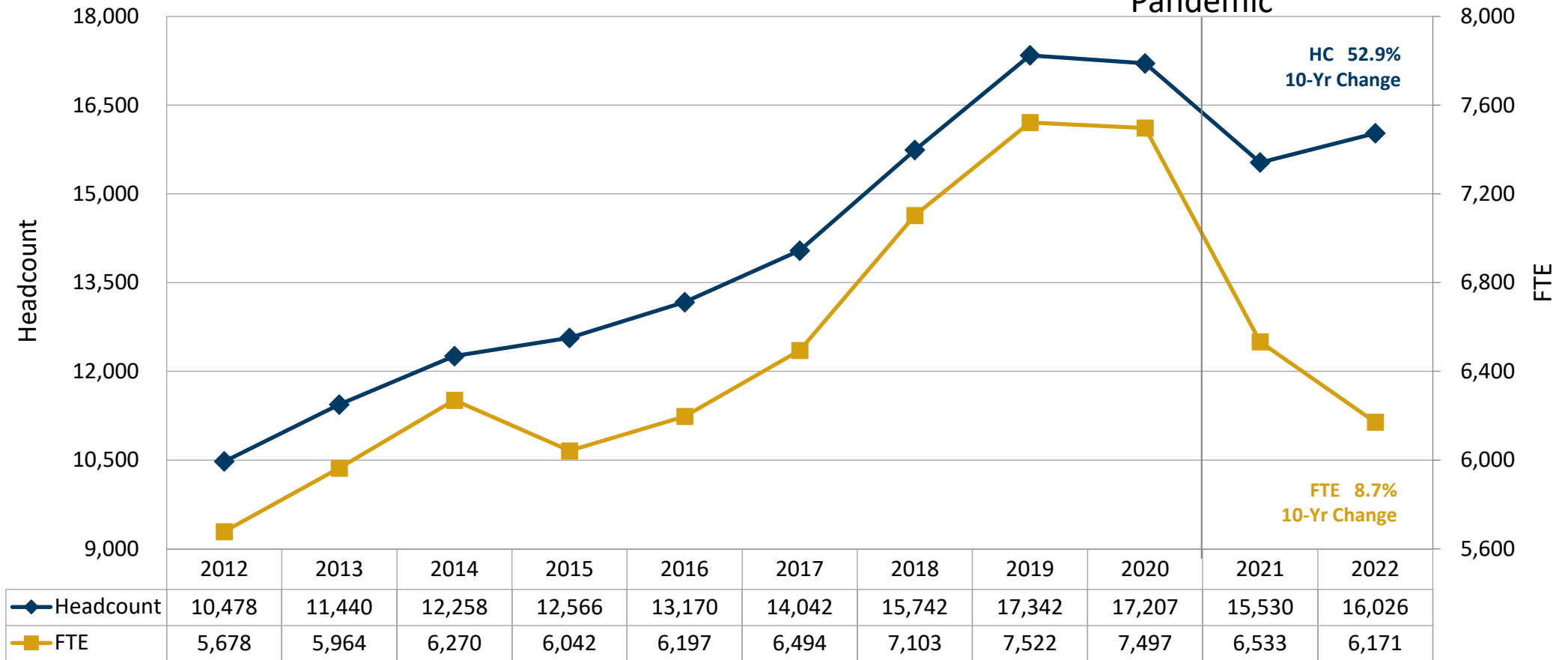
Source: KHEDS Academic Year Collection

More data can be found at stats.kansasregents.org/EnrollmentTab



Academic Year Enrollment

Technical Colleges Headcount and Full-time Equivalency



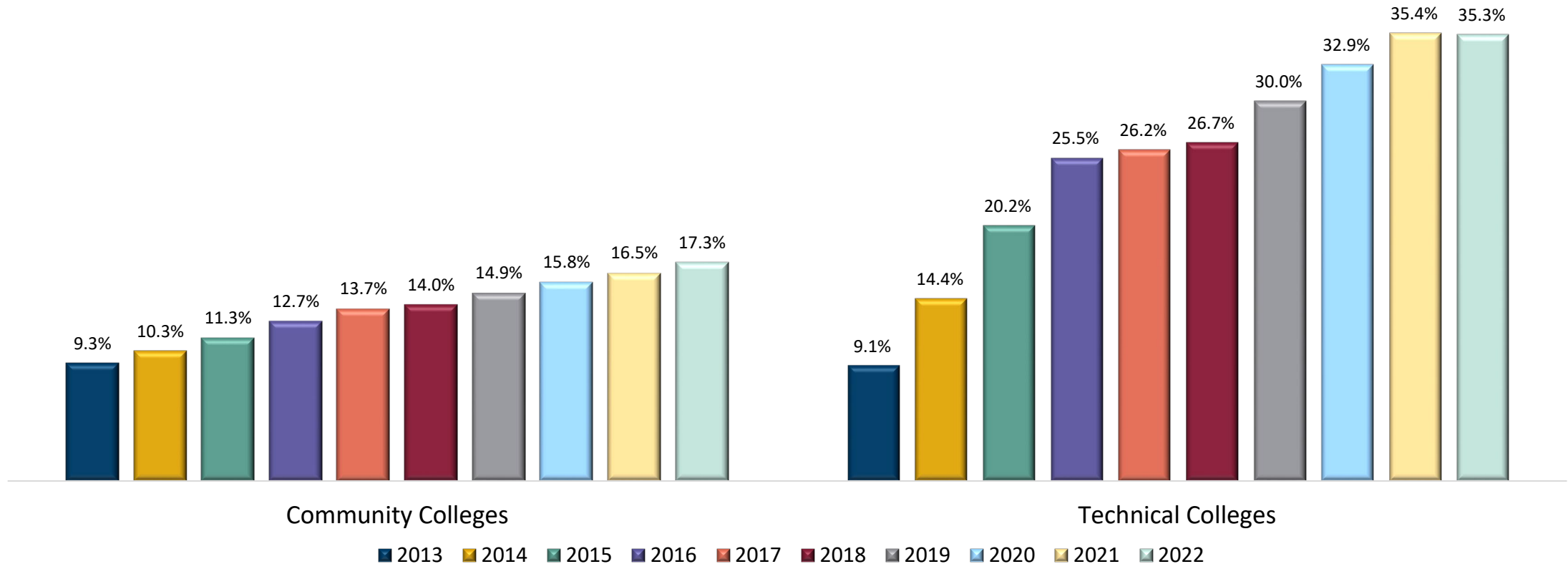
Source: KHEDS Academic Year Collection

More data can be found at [stats.kansasregents.org; Enrollment Tab](https://stats.kansasregents.org/EnrollmentTab)



Academic Year Enrollment

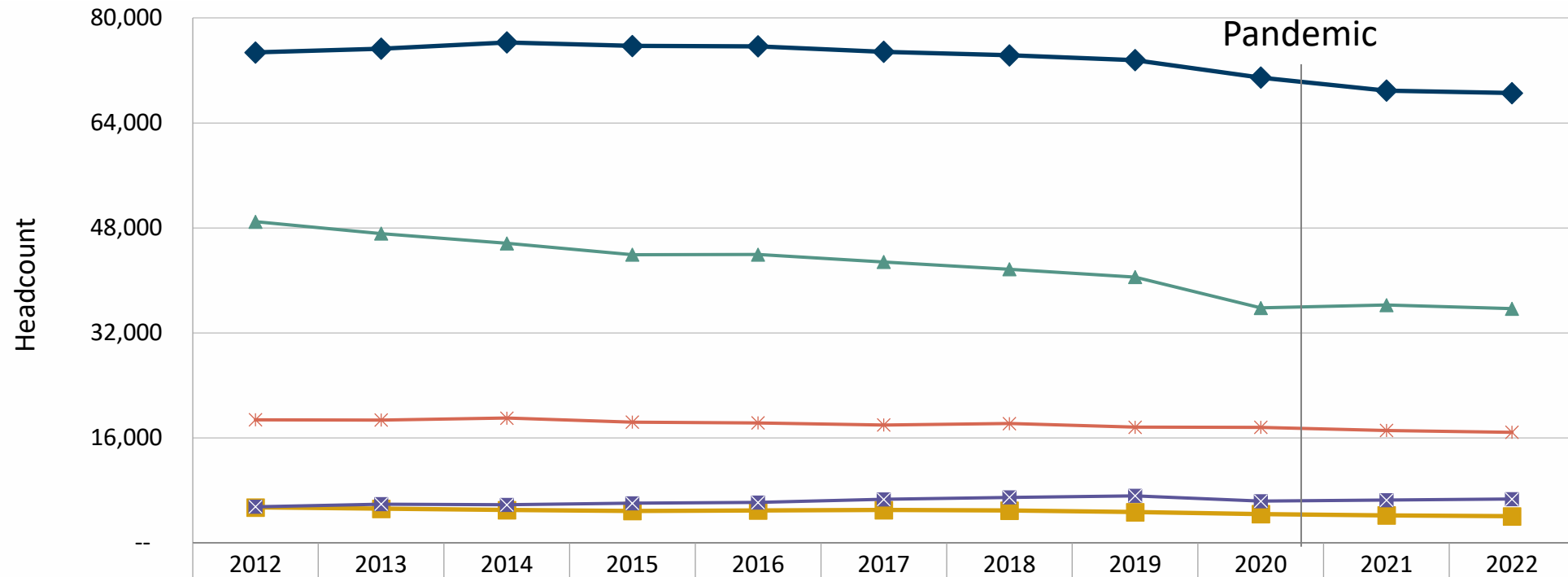
Community and Technical College Percent of Credit Hours by High School Students



Source: KHEDS Academic Year Collection



Fall Census Full-time Equivalency Enrollment



Source: KHEDS Fall Census Collection

More data can be found at stats.kansasregents.org; Fall Census Tab

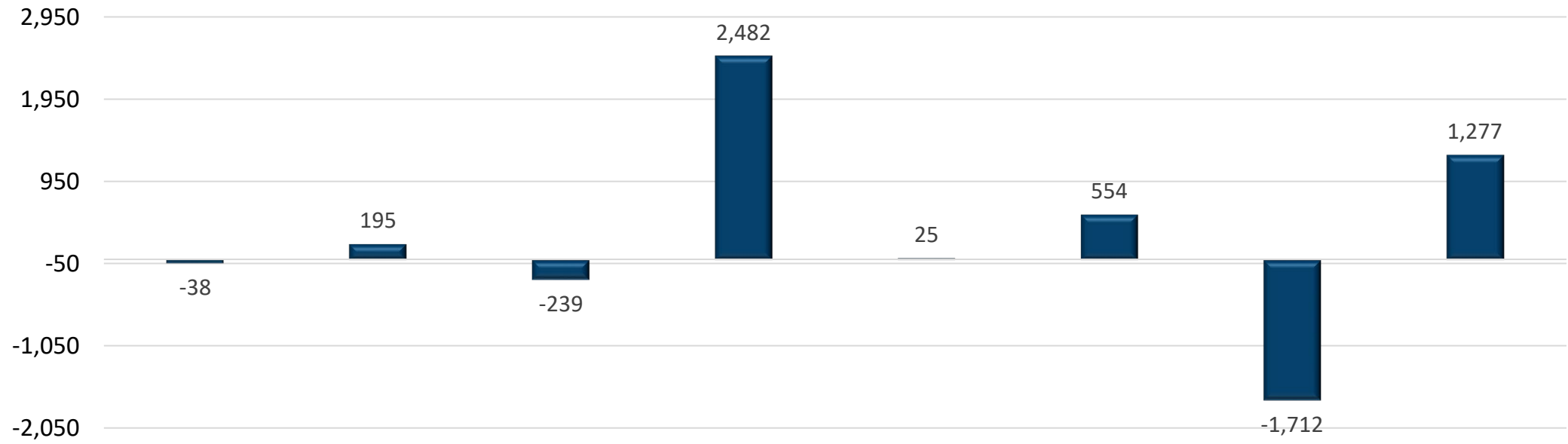


COLLEGE READINESS AND EQUITY



Ten-Year Demographic Changes

Kansas High School Graduates



	American Indian	Asian	Black	Hispanic	Native Hawaiian or Pacific Islander	Two or More Races	White	Total
10-Year Change	-38	195	-239	2,482	25	554	-1,712	1,277

Source: P20 Data System



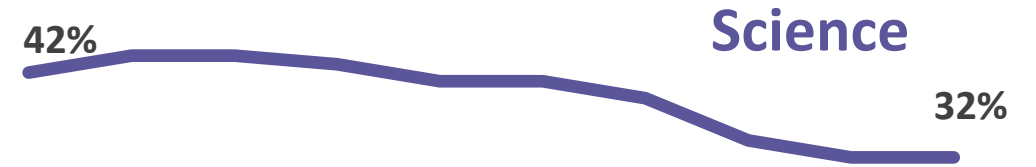
College Readiness By Subject

Percent Meeting ACT Benchmarks 2013 vs 2022

English

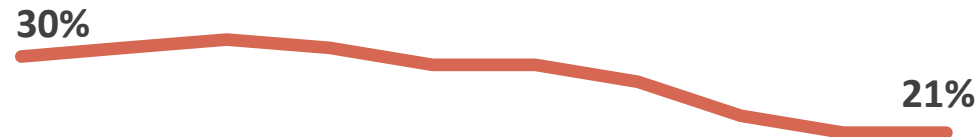


Reading



Benchmarks
English – 18
Math – 22
Reading – 22
Science – 23

Met All Four

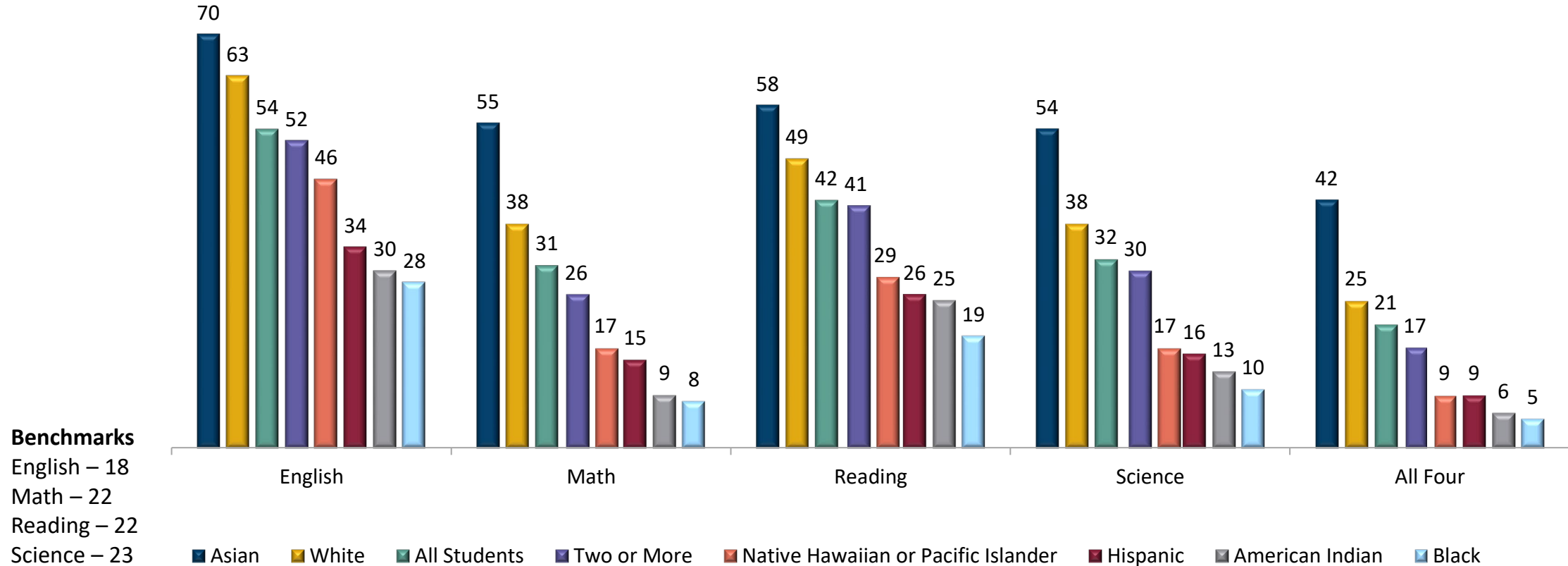


Source: ACT Data Visualization Tool – 2022 Kansas Graduating Seniors



College Readiness By Subject

Percent Meeting ACT Benchmarks by Race/Ethnicity

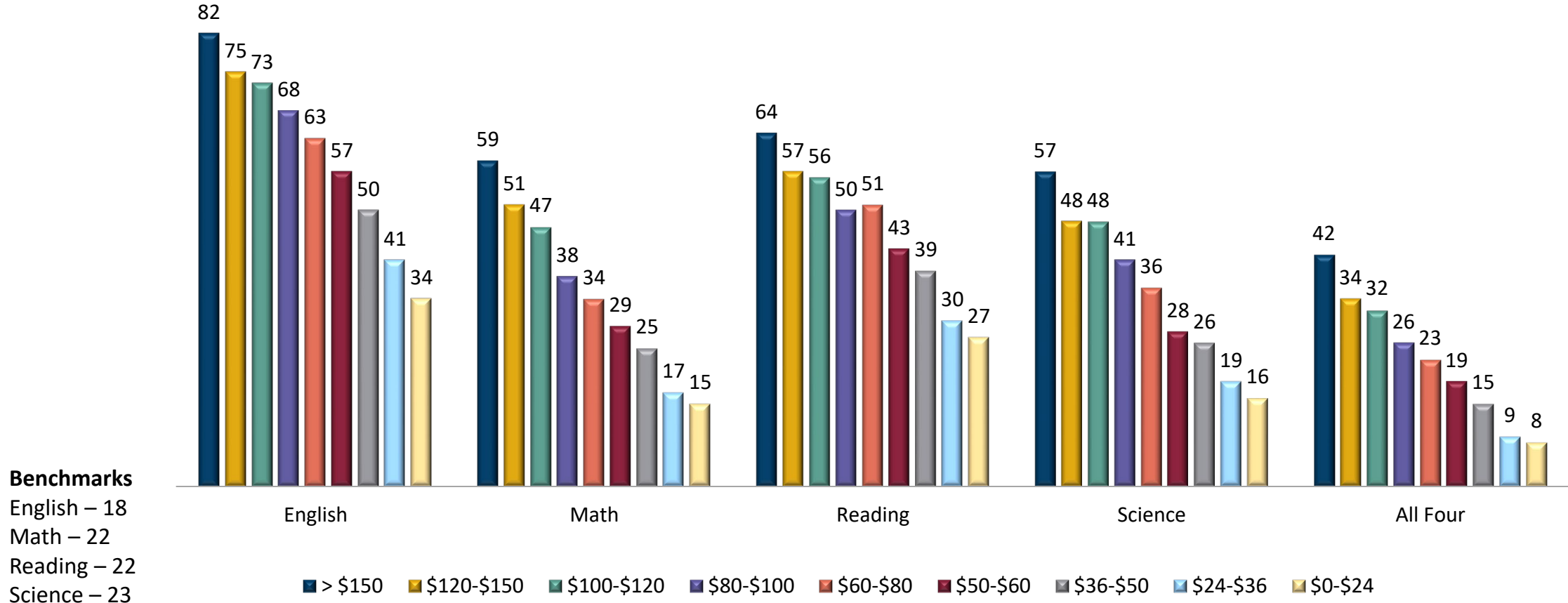


Source: ACT Data Visualization Tool – 2022 Kansas Graduating Seniors



College Readiness By Subject

Percent Meeting ACT Benchmarks by Family Income

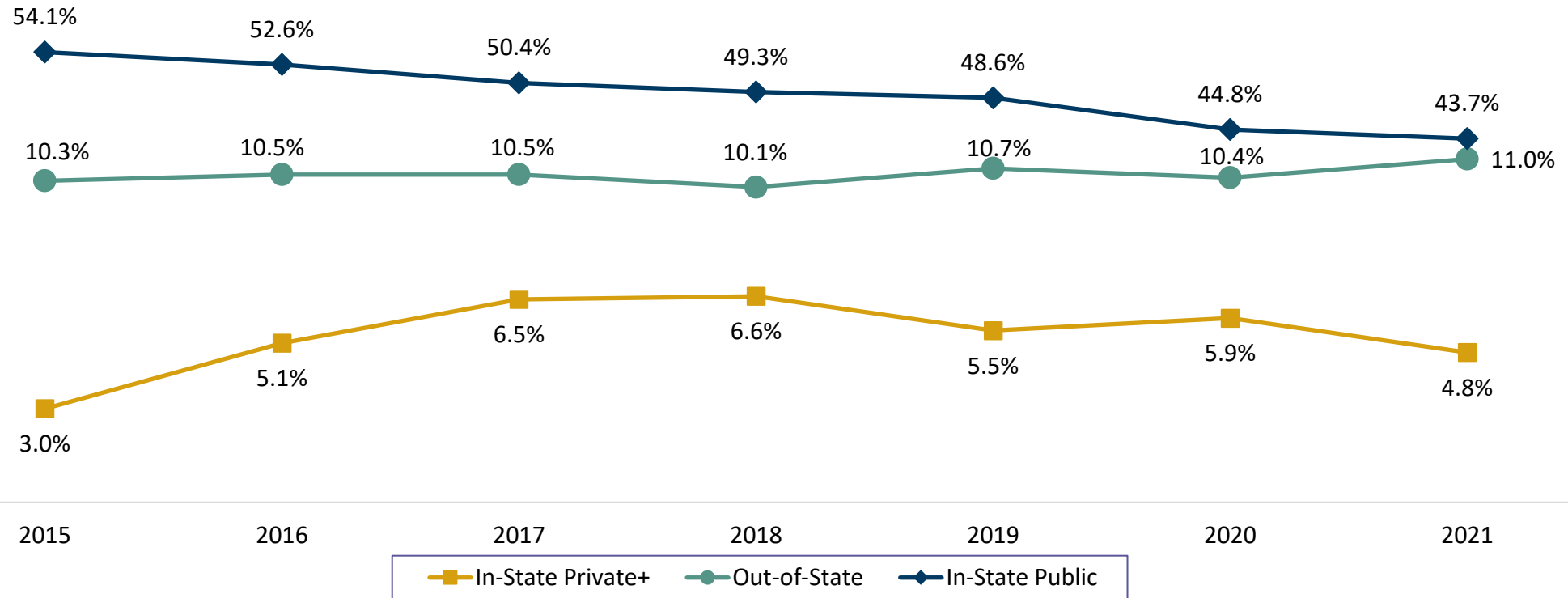


Source: ACT Data Visualization Tool – 2022 Kansas Graduating Seniors



Kansas College Going Rates

Percentage of Kansas High School Students
Entering Public, Private and Out-of-State Colleges

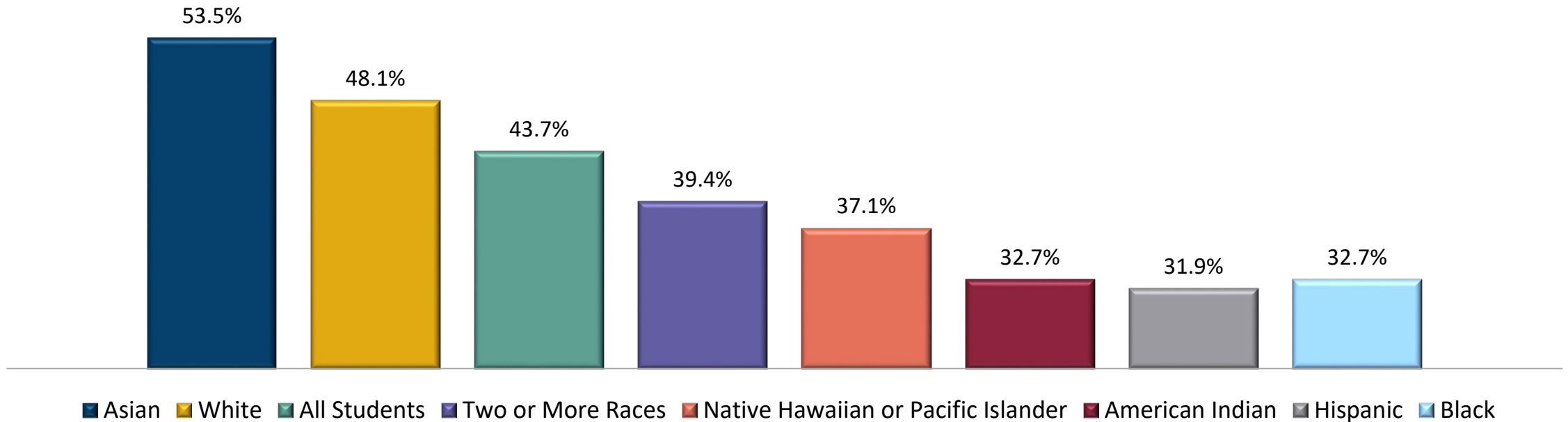


Source: KHEDS Academic Year Collection, P20 Data System, and National Student Clearinghouse
Kansas High School Graduates entering Postsecondary the academic year following high school graduation
+In-State Private Derived from Multiple Sources



2021 Public College Going Rates

Percent by Race/Ethnicity



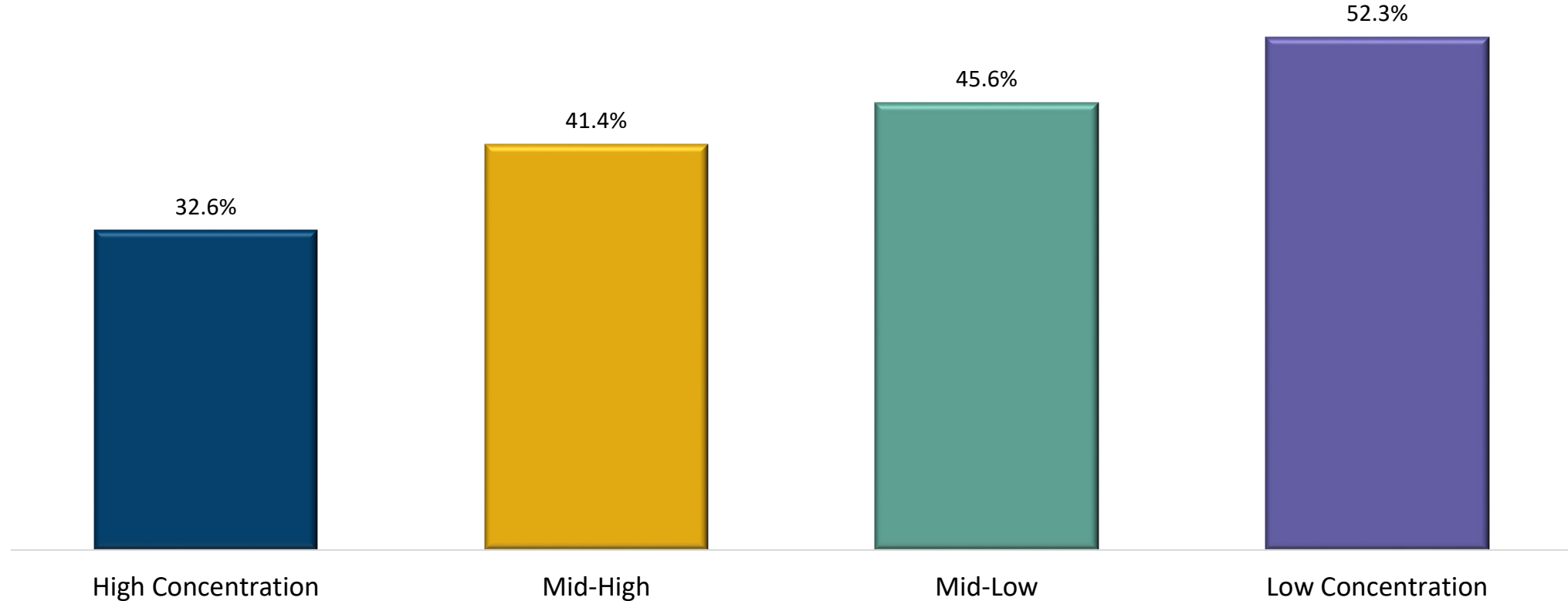
Source: KHEDS Academic Year Collection and P20 Data System

Kansas High School Graduates entering Public Postsecondary the academic year following high school graduation



Public College Going Rates

High School Concentration of Students Who Qualify for Free/Reduced Lunch

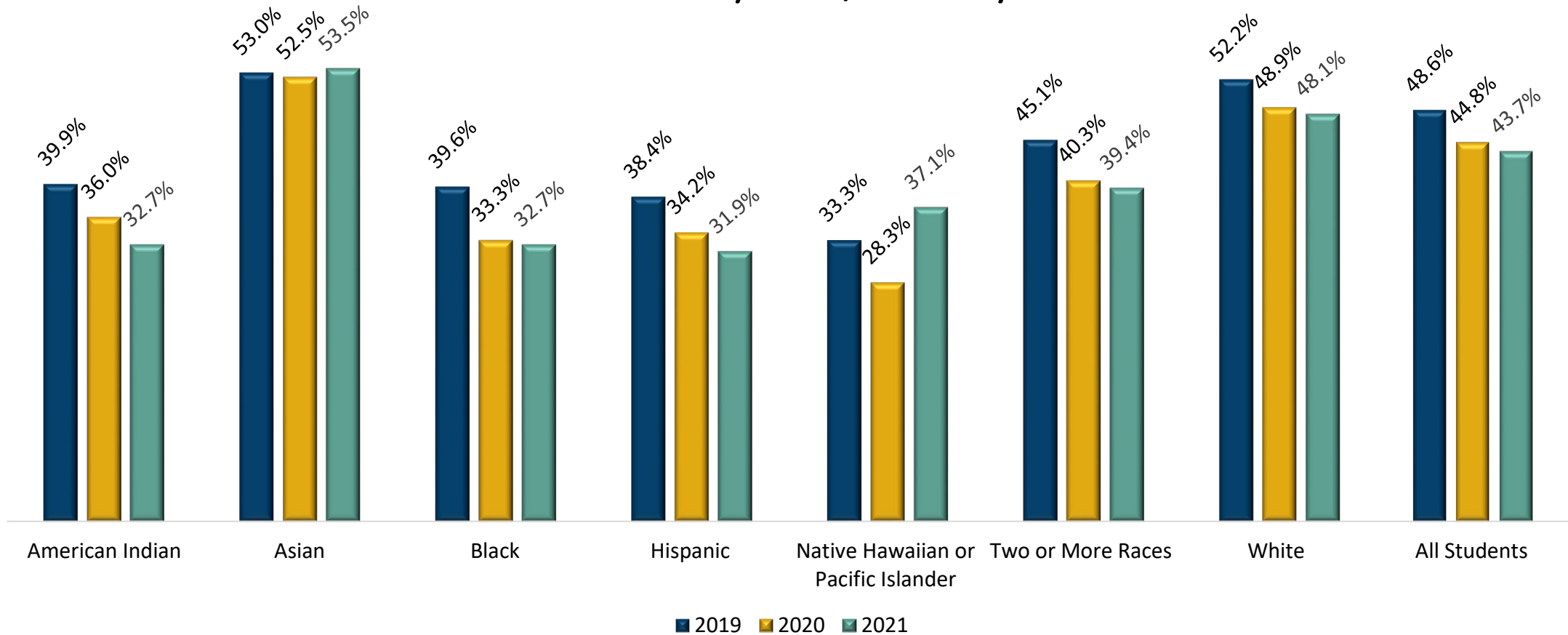


*Source: KHEDS Academic Year Collection and P20 Data System
Kansas High School Graduates entering Public Postsecondary the academic year following high school graduation*



Public College Going Rates

Percent by Race/Ethnicity



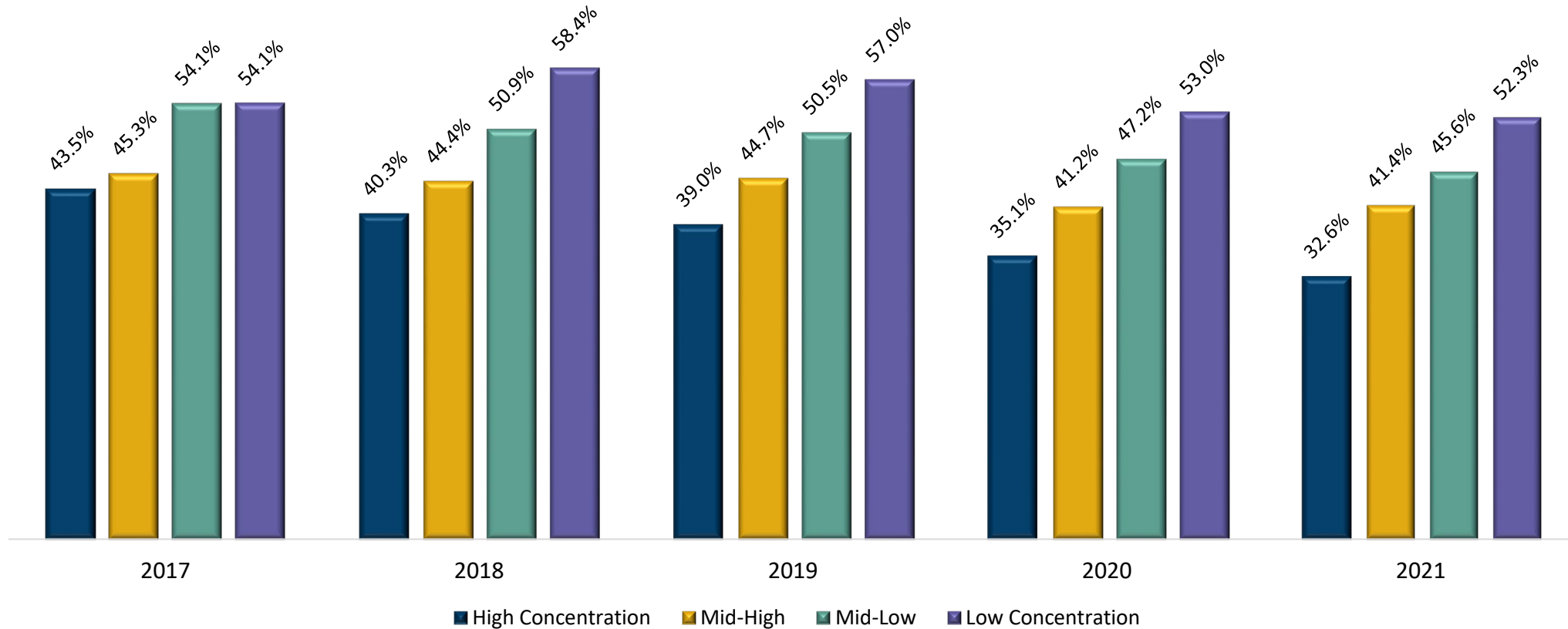
Source: KHEDS Academic Year Collection and P20 Data System

Kansas High School Graduates entering Public Postsecondary the academic year following high school graduation



Public College Going Rates

High School Concentration of Students Who Qualify for Free/Reduced Lunch



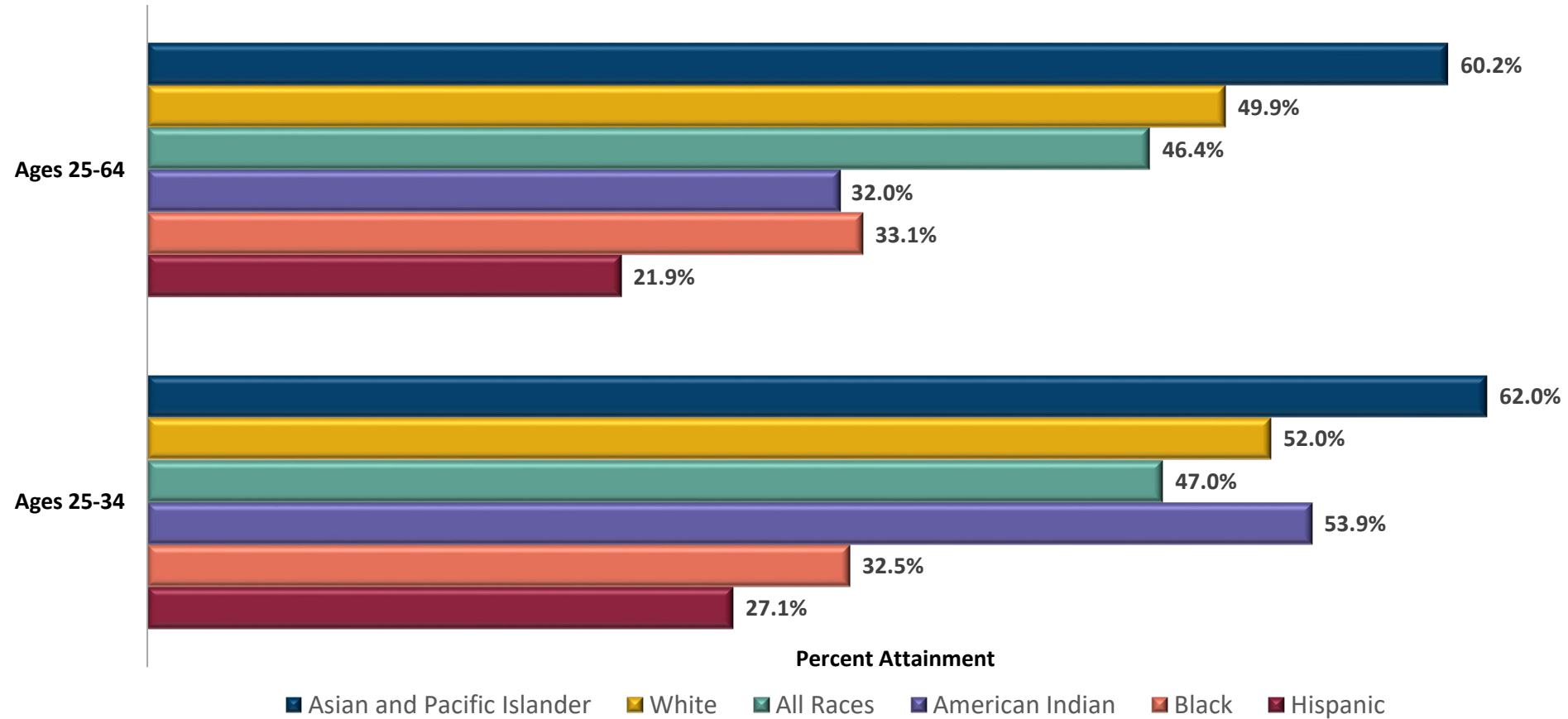
Source: KHEDS Academic Year Collection and P20 Data System

Kansas High School Graduates entering Public Postsecondary the academic year following high school graduation



Attainment Rates

Percent by Race/Ethnicity



Source: Lumina Foundation, A Stronger Nation, February 2023 Report



Developmental Education

Percent of Students Enrolled in Developmental Education

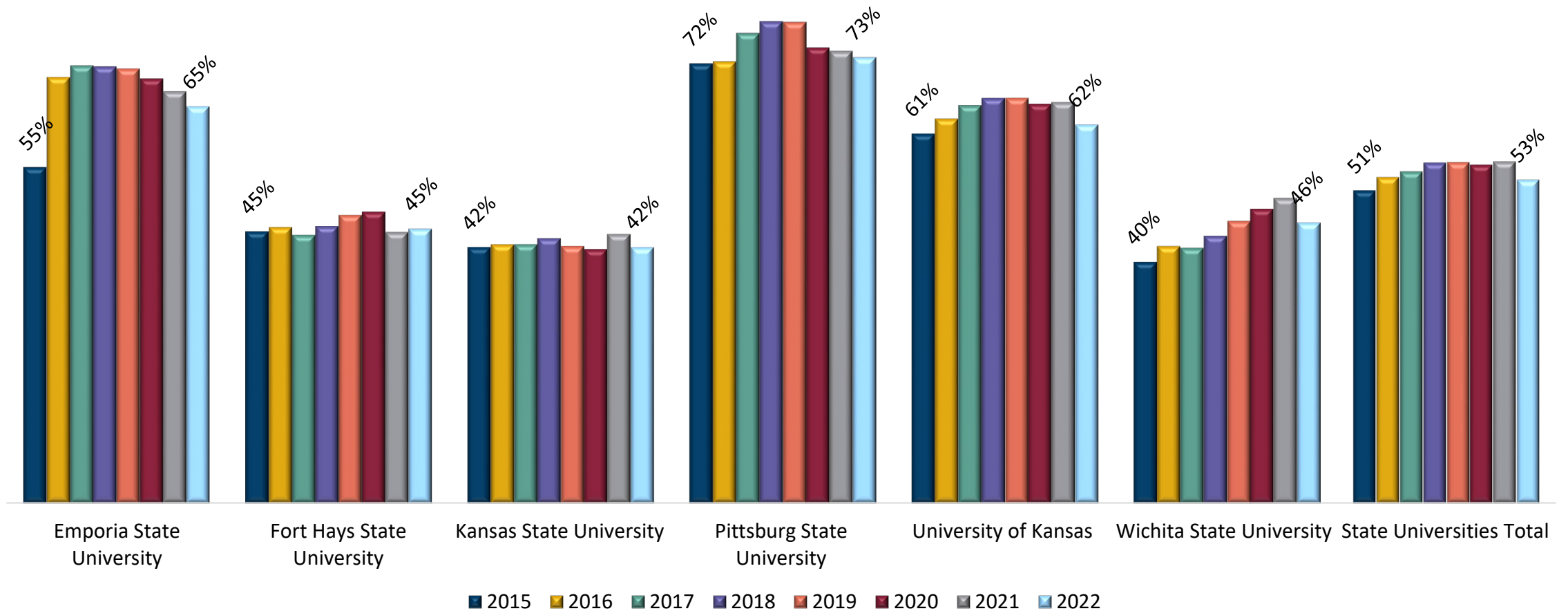
Institution Type	Math, English, or Reading	Math	English/Reading
State Universities	9.8%	8.8%	2.2%
Community Colleges	24.8%	18.4%	14.8%
Unduplicated	18.0%	14.1%	8.6%

Source: P20 Data System and KHEDS Academic Year Collection

Definitions: Unduplicated number of 2021 Kansas High School Graduates entering 2022 Kansas Public Postsecondary as degree seeking, during the first year following High School Graduation



Students with Sufficient Academic Load For On-time Graduation



Source: KHEDS Academic Year Collection



Serving Pell-Eligible Students

Pell Count Systemwide by Academic Year									
Institution Type	2014	2015	2016	2017	2018	2019	2020	2021	2022
State Universities	22,597	22,504	21,550	20,928	21,060	20,924	19,836	18,136	17,011
Washburn University	2,602	2,291	2,155	2,048	1,998	1,980	1,831	1,591	1,614
Community Colleges	28,156	26,522	23,445	21,289	21,136	20,711	20,221	17,888	17,736
Technical Colleges	4,019	3,569	3,035	3,025	3,275	3,515	3,220	2,607	2,464
Grand Total	57,374	54,886	50,185	47,290	47,469	47,130	45,108	40,222	38,825

Source: KBOR KHEDS AY Collection

*All university data exclude graduate students.

Pell Percentage Systemwide by Academic Year									
Institution Type	2014	2015	2016	2017	2018	2019	2020	2021	2022
State Universities	29.3%	29.2%	28.1%	27.7%	28.1%	28.1%	26.9%	25.4%	24.8%
Washburn University	43.8%	40.1%	38.7%	36.8%	36.1%	39.1%	35.4%	33.5%	35.6%
Community Colleges	39.4%	38.6%	35.5%	32.8%	33.9%	34.7%	34.6%	32.8%	33.7%
Technical Colleges	53.6%	50.6%	45.6%	44.0%	43.9%	44.6%	44.1%	42.0%	40.4%
Grand Total	35.4%	34.6%	32.4%	30.9%	31.6%	32.0%	31.2%	29.4%	29.5%

Source: KBOR KHEDS AY Collection

*All university data exclude graduate students.

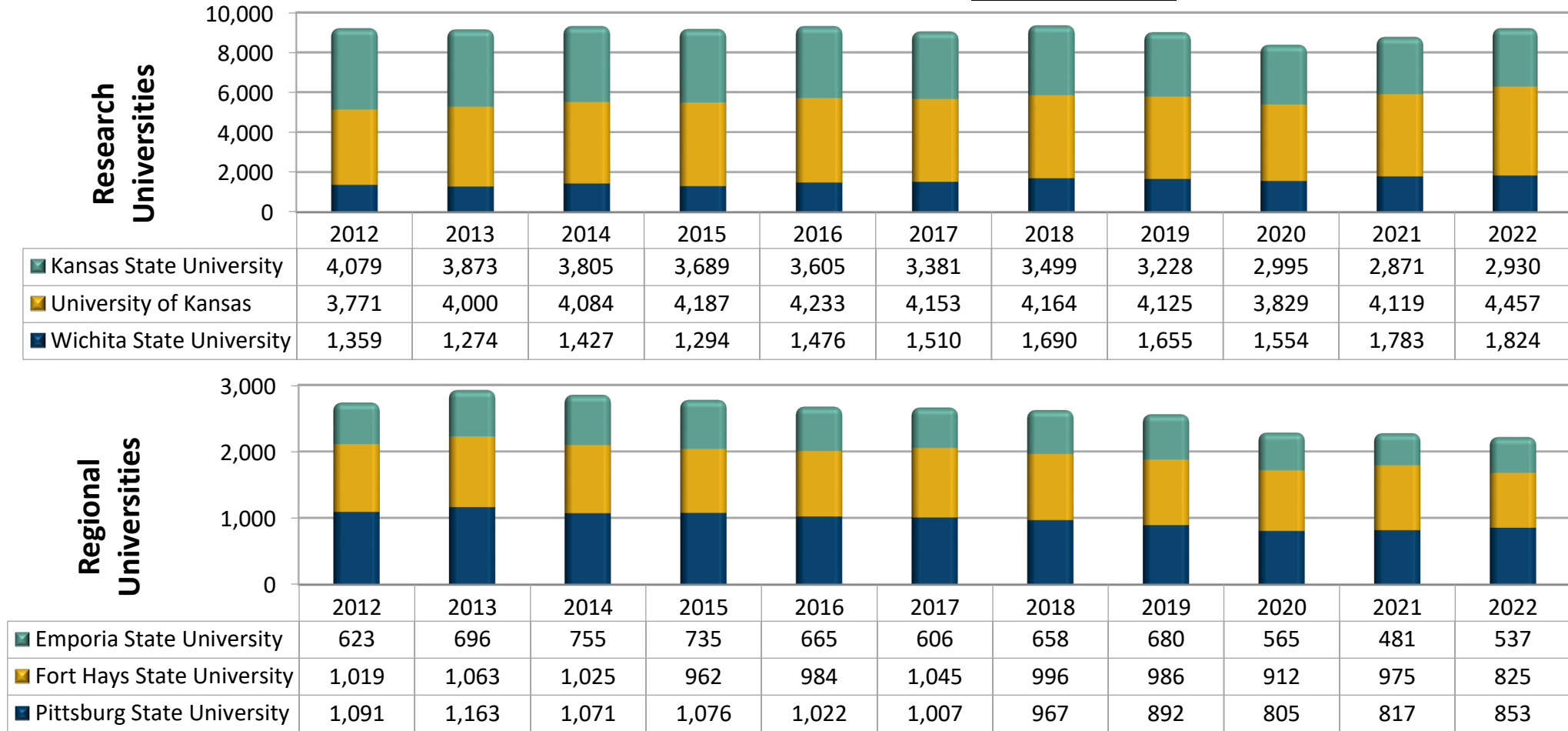


CHARACTERISTICS OF ENTERING STUDENTS



First-Time Entering Enrollment

State Universities Headcount – Fall Census

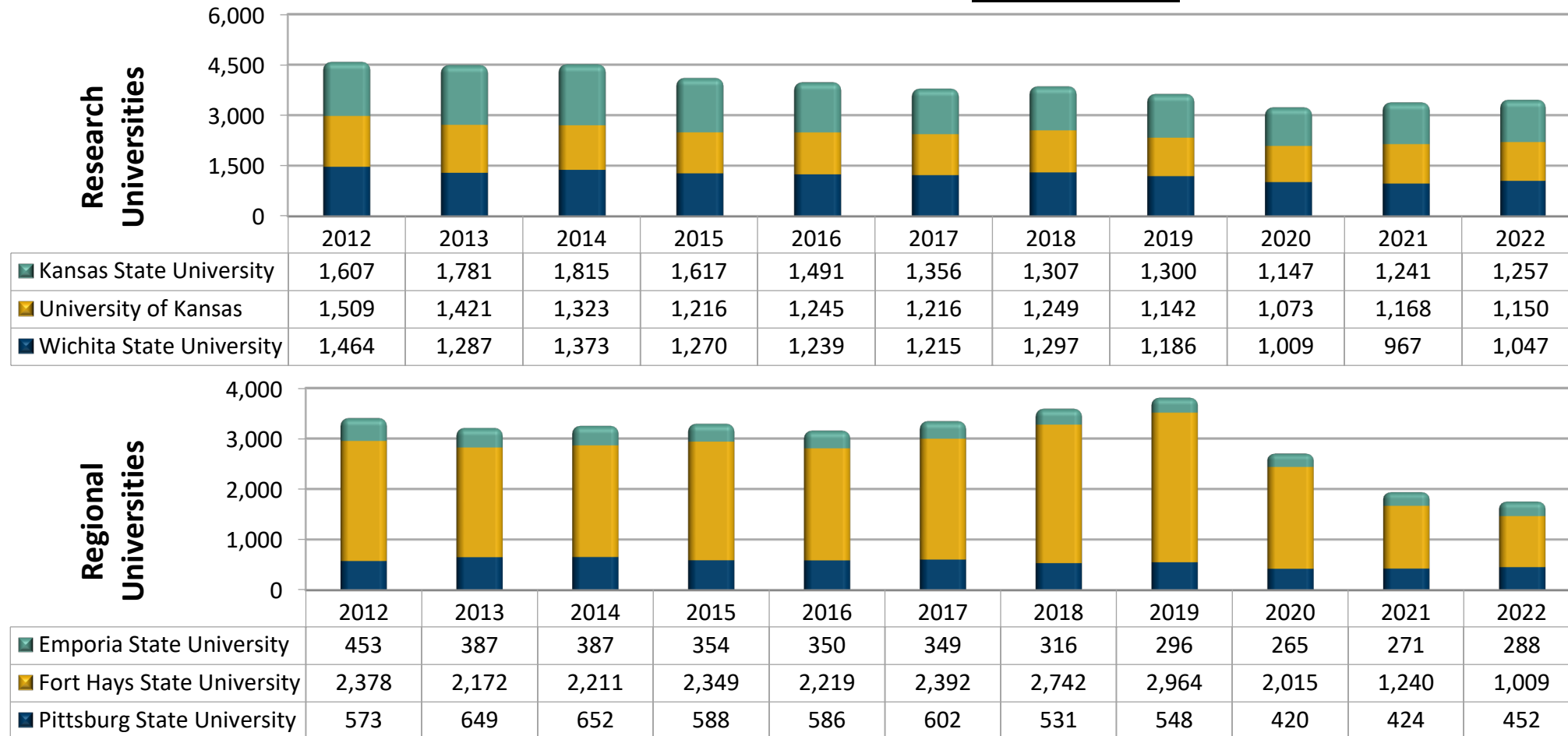


Source: KHEDS Fall Census Collection



New Transfer Enrollment

State Universities Headcount – Fall Census



Source: KHEDS Fall Census Collection

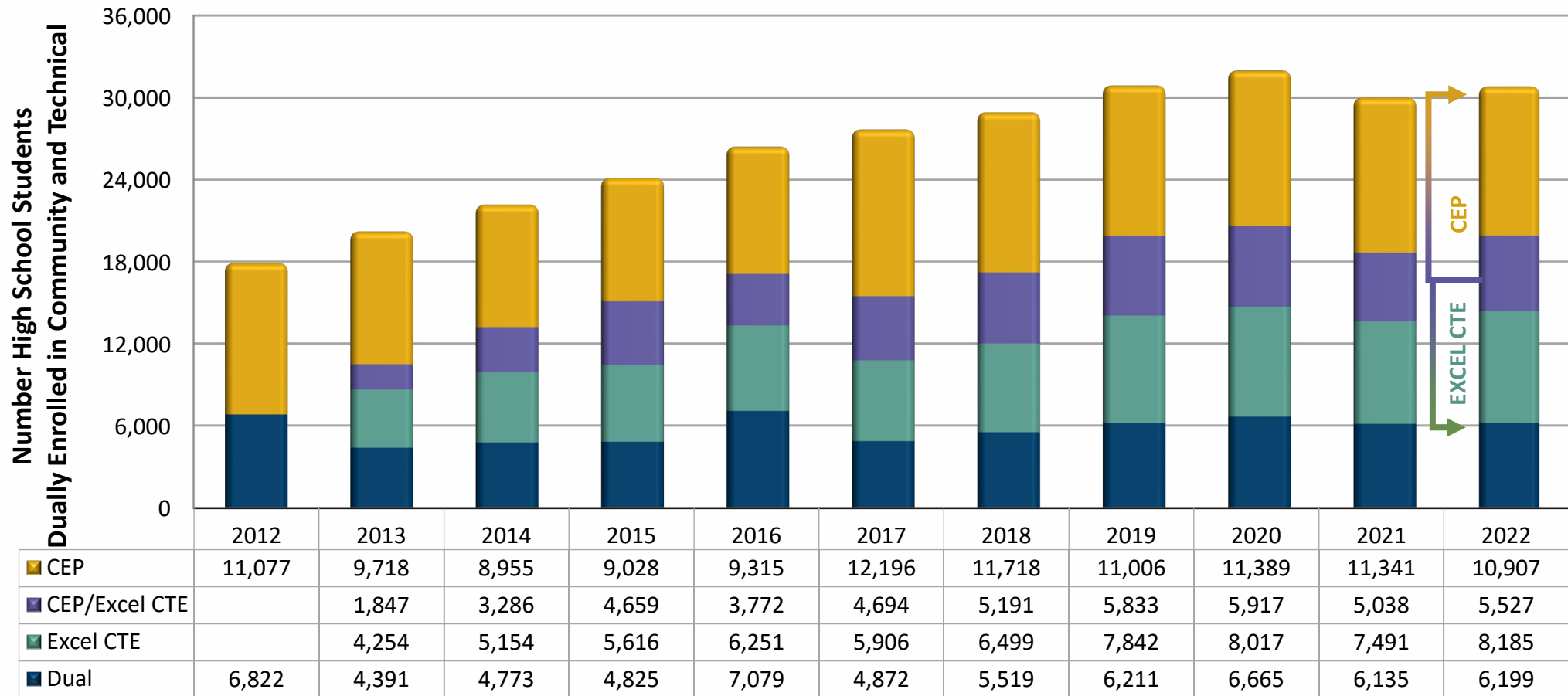


THE EXPANDING CAMPUS



Dual Enrollment

Community and Technical Colleges



Source: KHEDS Academic Year Collection

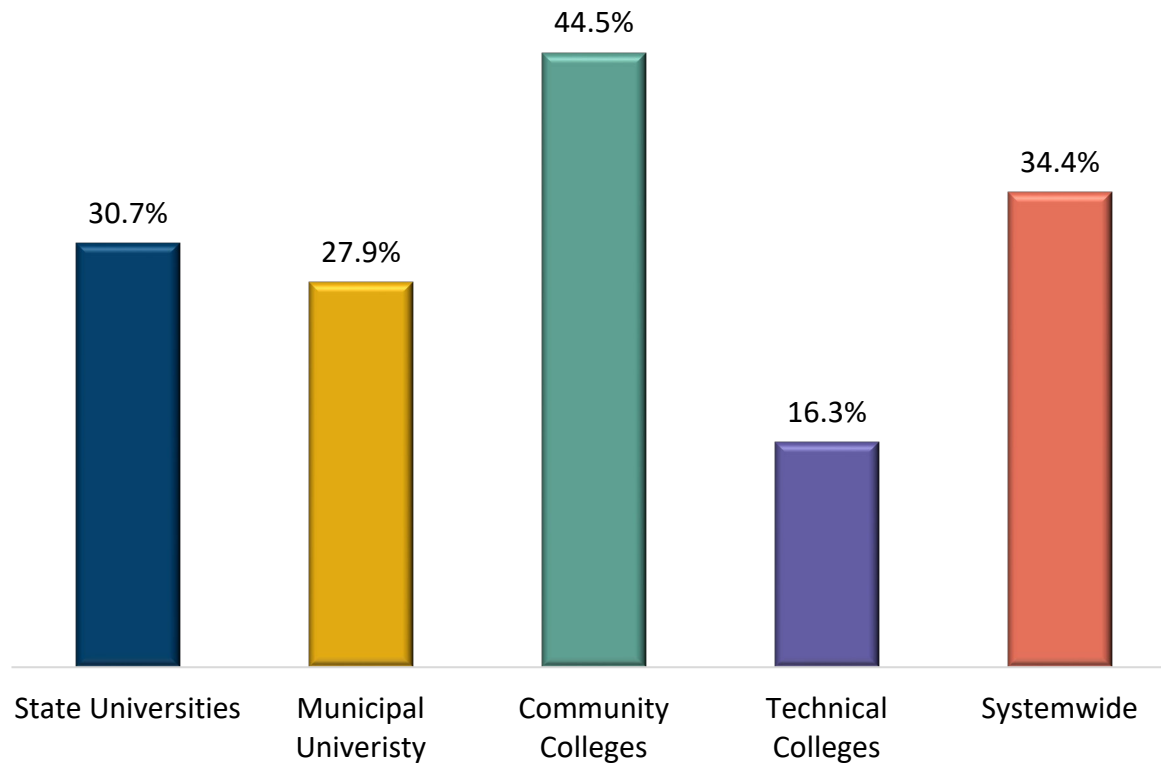
More data can be found at stats.kansasregents.org; High School Tab



Distance Education

Academic Year 2022

% of Total Credit Hours Distance Ed



Source: KHEDS Academic Year Collection

% of Distance Ed by Sector

