

*CHANCELLOR
LEADERSHIP
STATEMENT*

THE OPPORTUNITY



The Kansas Board of Regents selected Bernadette Gray-Little to be the Chancellor of the University of Kansas in 2009. Prior to that, Dr. Gray-Little had been the Provost and Vice President of Academic Affairs at the University of North Carolina at Chapel Hill, another highly respected AAU institution.

Over the past eight years Dr. Gray-Little has provided the University with exemplary, accomplishment-filled leadership. Among her many successes are:

Successfully completed the major capital campaign, Far Above: The Campaign for Kansas, which raised more than \$1.66 billion for the university, far exceeding its \$1.2 billion goal. The campaign boosted student support, faculty, facilities and programs at the University of Kansas and the KU Medical Center.

Guided the development of Bold Aspirations, the university's strategic plan, which charted a transformation of KU and reflected the top priorities of the Lawrence and Edwards campuses over the past five years. Bold Aspirations can be found at boldaspirations.ku.edu.

Created new admission procedures – which took effect in fall 2016 – and revamped financial aid by creating four-year renewable scholarships, leading to five straight years of freshman class growth.

Launched KU's first university-wide curriculum, the KU Core, which incorporates both classes and experiences.

Oversaw the university's expansion of the School of Medicine-Wichita from a two-year to a four-year program in 2011, and the creation of the new School of Medicine at Salina the same year.



Last September, Chancellor Gray-Little announced her intention to step down at the end of the school year, stating that “we have made tremendous strides as a university and positioned KU for even greater achievements in the future. We have completed many critical initiatives, and many more are nearing completion. Now is an ideal time for the University of Kansas to identify a new leader to guide the next chapter in the university's history.”

The Kansas Board of Regents appointed Dave Dillon, retired Chairman and CEO of The Kroger Co. and a University of Kansas alumnus, to head the search committee for a new KU chancellor and hired the firm of R. William Funk and Associates as search consultant.



THE UNIVERSITY

Opened in 1866, the University of Kansas is recognized as one of the finest public research universities in the country and is a member of the Association of American Universities. KU enrolls more than 28,000 students, employs more than 2,000 faculty members, and has an annual operating budget of nearly \$1.3 billion.

Considered one of the most beautiful campuses in the nation, KU's main campus occupies 1,000 acres on and around Mount Oread in Lawrence, a community of 97,948 located among the forested hills of eastern Kansas.

The university also includes the KU Medical Center in Kansas City, Kansas; the Edwards Campus in Overland Park; School of Medicine campuses in Wichita and Salina; and educational and research facilities throughout the state.

The university's unique mascot, the Jayhawk, represents the noble ideals of the 19th-century pioneers who founded a university devoted to freedom and a passion for discovery. More than 150 years later, the Jayhawk unites 255,000 active KU alumni worldwide, who are fiercely loyal to their alma mater and its beloved and enduring traditions.

KU's mission is to lift students and society by educating leaders, building healthy communities, and making discoveries that change the world.



Other University of Kansas highlights include:

In fall 2016, KU enrolled the most academically talented freshman class in its 150-year history — the result of new admissions standards, renewable scholarships, and increased focus on academic opportunities through the KU Core. The 2016 freshmen have KU all-time highs in average ACT (25.7) and average GPA (3.58) and represent the second-most diverse class (22.9% minority) in university history.

The university has now had five straight years of freshman class growth and three straight years of overall enrollment growth. KU currently has 28,401 students from all 105 counties in Kansas, all 50 states and 110 countries.

The university encourages faculty, staff, and students to be actively engaged in the world. About 26 percent of KU students study abroad, and more than 2,538 international students attend KU. KU is among the top universities in the nation in the production of faculty Fulbright Scholars, according to The Chronicle of Higher Education.

The University of Kansas is making concerted efforts to ensure that it offers a welcoming and supportive environment for all to learn, live, work, and discover. A Diversity, Equity and Inclusion Advisory Group of faculty, students and staff was appointed in late 2015 and reviews on an ongoing basis the degree to which KU provides inclusive educational, research, and social environments for all members of the university community. A campus climate survey was administered in fall 2016, the results of which will be shared with the KU community this spring.

KU consistently earns high rankings for its academic programs. U.S. News & World Report ranked 49 graduate programs at the university in its 2017 “Best Graduate Schools.” Ten of those programs are in the top 10 among public universities, and 42 are in the top 50. Two KU graduate programs, special education and city management/urban policy, rank No. 1 among all universities.

The University of Kansas Cancer Center is one of only 69 National Cancer Institute-Designated Cancer Centers, and the center is preparing for the next step, applying for NCI designation as a Comprehensive Cancer Center. KU’s Alzheimer’s Disease Center has received the elite designation of a National Institute of Aging Alzheimer’s Disease Center.

The American Academy of Family Physicians ranked the KU School of Medicine second nationwide in 2015 for the number of graduates who go into family medicine. Half of all physicians working in the state of Kansas were trained at KU. The School of Nursing is one of 48 nursing schools in the nation to be designated a Center of Excellence in Nursing Education.

KU researchers brought \$238.8 million in externally sponsored research expenditures to the state in fiscal year 2015. For example, KU’s School of Pharmacy ranks in the top 10 nationwide for National Institutes of Health funding, a position it has held for 22 consecutive years.

In 2016, KU broke ground on the redevelopment of its Central District on the main campus. This three-year project, the largest expansion in nearly 100 years, includes innovative academic and research facilities, a student union, and student housing and dining facilities. The redevelopment will add 280,000 square feet of interdisciplinary research space, including the Integrated Science Building and five new core labs. Open space, retail areas, and a new pedestrian and bicycle trail will be included in the redevelopment.



Since its inception in 1891, the KU Endowment Association has been an essential partner to KU. With an endowment of \$1.95 billion, KUEA provided \$169.6 million in support to the university and raised \$209.9 million in fiscal year 2016. Since its founding, KU Endowment has provided more than \$2.3 billion in direct support to KU, including 86 percent of its land, 200 professorships and 2,300 scholarship funds.

According to Livability.com, Lawrence is a repeat city on the Top 100 Best Places to Live. The downtown area is regarded as one of the most dynamic shopping, dining and entertainment districts in the Midwest, and Massachusetts Street is ranked among the most scenic main streets in America. More than 50 parks and a thriving music and arts scene add to the city's amenities. Kansas City, home to the KU Medical Center and just 40 minutes to the east, offers an international airport, entertainment, and business and internship opportunities.

KU is a member of the NCAA Division I Big 12 Conference, sponsoring 18 men's and women's varsity sports. KU's student-athletes give fans many reasons to cheer. During the 2015-16 academic year, four KU squads advanced to the postseason and six other teams were represented by one or more athletes in postseason competition. Jayhawks also set a new academic record in spring 2016, with 39 student athletes earning 4.0 GPAs and 243 earning a 3.0 or higher.



THE POSITION



The nine-member Kansas Board of Regents is the governing board of the state's six universities and the statewide coordinating board for the state's 32 public higher education institutions (six state universities, one municipal university, nineteen community colleges, and six technical colleges). In addition, the Board administers the state's student financial aid, adult education, high school equivalency, and career and technical education programs.

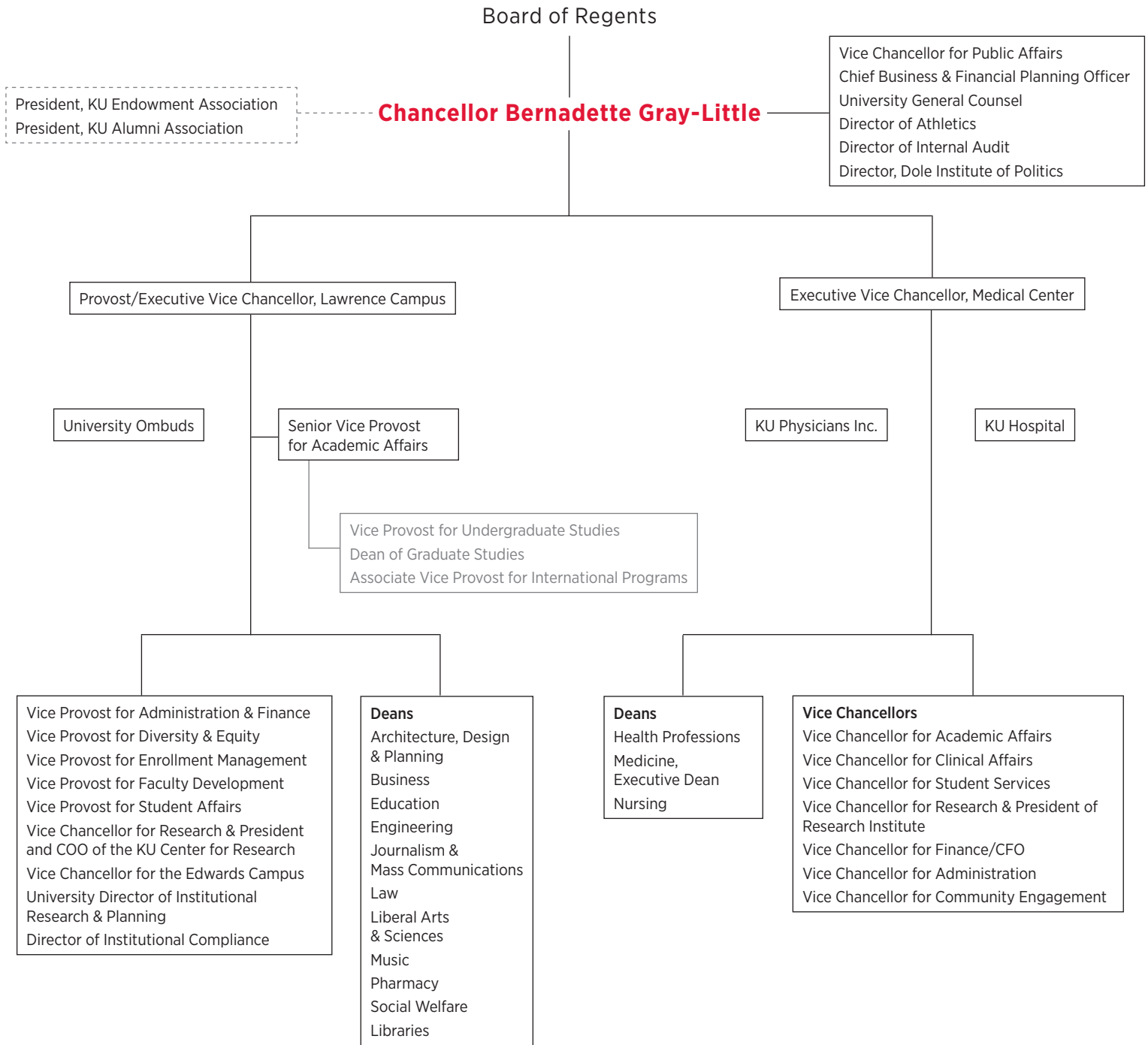


The Board of Regents' 10-year strategic agenda for public higher education in the state, Foresight 2020, calls upon the University of Kansas to increase higher education attainment, improve alignment with the needs of the state's economy, and ensure university excellence.



Reporting directly to the Kansas Board of Regents, the Chancellor is the chief executive officer of the University of Kansas, overseeing campuses in Lawrence, Kansas City, Overland Park, Salina, and Wichita, in addition to research and educational centers in Hays, Parsons, Topeka, and Yoder. The Chancellor is one of the key spokespersons for higher education in Kansas and represents the University of Kansas in various national higher education associations and venues.

The university organization chart reflects the Chancellor's responsibilities and reporting relationships:



CHARACTERISTICS & QUALIFICATIONS



The Board of Regents and Chancellor Search Committee seek candidates who have demonstrated exemplary leadership abilities and accomplishments.



It is expected that candidates will have impeccable integrity, strategic vision, a high energy level, excellent interpersonal and communication skills, and everyday common sense.

The best candidates will be individuals of stature who have a keen understanding of higher education, a passion for educating students, and a proven respect and appreciation for a world-class faculty.



It is expected that the best candidates for the chancellor position will exhibit the following:

- Unquestioned integrity and the highest ethical standards.
- A deep appreciation for the role of a major public research institution, and specifically the University of Kansas, in the 21st Century and the strategic vision to keep KU relevant and ahead of the curve.
- An in-depth understanding of challenges and key issues confronting higher education, with an ability to prioritize and execute innovative solutions.
- Demonstrated leadership abilities at the highest levels in a comparably complex university or organization; the ability to work with internal and external constituencies, including faculty, staff, students, the local, state, regional and national community, alumni worldwide, government, the media and the general public.
- The ability to generate resources for the university, including public funding, private fundraising and new revenue streams, and to connect these resources to the mission of the institution; and a fiscal acumen to guide a complex public research university.
- Commitment to and appreciation of research, scholarly activity, and academic excellence, including the distinctive contributions of a comprehensive research university to society, to the generation of new knowledge, and to the economic and cultural development of Kansas, the nation, and the world.



CHARACTERISTICS & QUALIFICATIONS

- In-depth understanding of and commitment to a nationally recognized academic medical center.
- In-depth understanding of and commitment to a strong Division I intercollegiate athletic program.
- Exemplary interpersonal skills and outstanding communication abilities.
- A collegial, approachable and adaptable style; the ability to listen and learn while demonstrating transparency, fairness, and respect for others.
- A passion for educating students and changing lives, and the skills to attract and retain students; a deep commitment to increasing access to higher education in Kansas, including an emphasis on underrepresented and first-generation college students.
- A commitment to an open, diverse and inclusive learning and working environment that nurtures the growth and development of all.
- The ability to recruit and retain excellent administrators and faculty and to develop, mentor and retain a strong leadership team.
- Respect for and understanding of the importance of academic freedom, peer review and shared governance.
- Demonstrated success working with federal, state and local public officials; ability to effectively communicate and elevate the understanding of the value of public higher education.



APPLICATIONS & NOMINATIONS



The Kansas Board of Regents has appointed a 25-person search committee and has retained the R. William Funk & Associates search firm to consult on this search.

The Kansas Board of Regents has announced that the search for the university's new Chancellor will be 'closed.' This means that no candidates will make official visits to campus, give presentations at open forums, or be disclosed to the public throughout the selection process. Additionally, confidentiality will be maintained after the selection has been made.

While applications and nominations will be accepted until a new Chancellor is selected, interested parties are encouraged to submit their materials to the address below by March 30 to ensure optimal consideration.

KU Chancellor Search
R. William Funk & Associates
2911 Turtle Creek Boulevard, Suite 300
Dallas, Texas 75219
Email: krisha.creal@rwilliamfunk.com
Fax: 214/523-9067

-The Kansas Board of Regents is an equal opportunity employer.-



Additional links:

KU Chancellor Search
chancellor.ku.edu/chancellor-search

University of Kansas
ku.edu

City of Lawrence, Kansas
lawrenceks.org

Association of American Universities (AAU)
aau.edu

Big 12 Athletic Conference
big12sports.com



This document was produced by
R. William Funk & Associates
in conjunction with the Kansas Board of Regents,
the University of Kansas Chancellor Search Committee,
and the University of Kansas.