

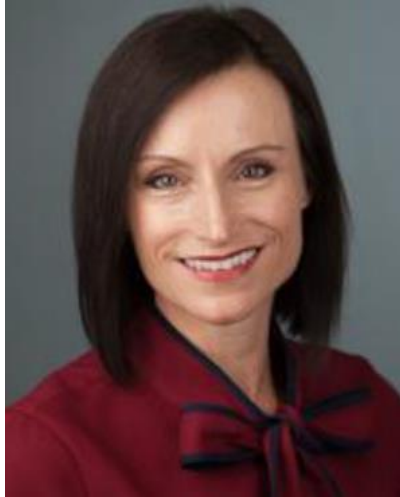


LITERACY BRIDGES

FOR KANSAS

*Connecting Science to Practice through
Educator and Community Engagement*

Introductions



Kelli Feldman
Associate Dean
for Teacher
Education and
Undergraduate
Programs



Heidi Hallman
Chair of the
Department of
Curriculum and
Teaching



Suzanne Myers
Associate Director
of KU's Center for
Research on
Learning



Trina Spencer
Director of KU's
Juniper Gardens
Children's Project

Others on the KU Planning Committee: Barbara Bradley, Rick Ginsberg, Chris Niileksela, Raul Rojas, Kwongok Song, Elizabeth Stevens, Bart Swartz, Jocelyn Washburn, Erin Yosai



VISION

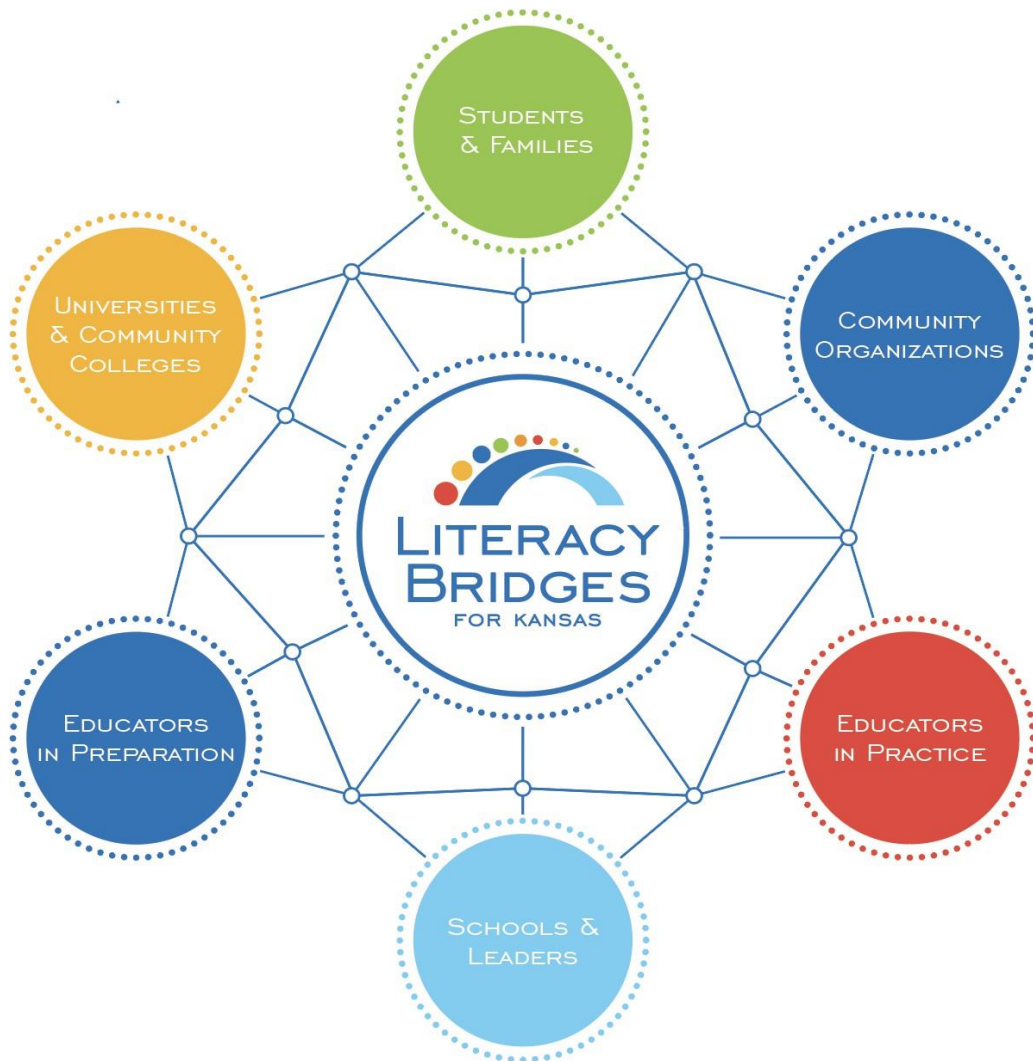
A **network** that collaboratively creates and implements technology-enhanced innovations to boost educators' structured literacy knowledge and implementation and elevate the literacy of all Kansas students.

- We will **serve** Wyandotte, Franklin, Johnson, Leavenworth, and Douglas counties.
- We will **engage** practicing teachers and school district leaders to understand and prioritize their professional development needs.
- We will **build** a coalition with universities and community colleges to implement the center's activities in all corners of the served area.
- We will **connect** regularly with community organizations and families to identify areas of need and assets.



Literacy Bridges for Kansas

Building a Collaborative Network



- Baker University
- Haskell Indian Nations University
- Johnson County Community College
- Ottawa University
- El Centro
- The Learning Club
- 19 School Districts
- University of Saint Mary
- MidAmerica Nazarene University
- Kansas MTSS and Alignment
- The Reading League KS
- Korean Language Institute
- The Family Conservancy
- And more to come!



Catchment Area 6



1 Million people **5** Counties

11 Independent & community colleges

23 School districts

168,700 Students

44% Economically disadvantaged

5-30% Bilingual students



KEY START UP ACTIVITIES

Building bridges

- Create LBK leadership structure and process
- Convene an advisory board
- Hire and train staff
- Secure spaces across the catchment area
- Purchase initial supplies
- Conduct a needs assessment
- Develop LBK website
- Create technology enhancement prototypes

KEY SCALE UP ACTIVITIES

Strengthening bridges

- Hold regular community meetings
- Operate Simulation Lab
- Implement three-tiered model of professional learning
- Host Summer Literacy Institutes
- Run literacy summer camps
- Assist districts to develop literacy plans
- Offer literacy screenings/evaluations
- Coordinate after-school tutoring in community sites
- Administer microcredentials
- Engage in ongoing improvement



Three Service Circles

College students preparing to be general education and special education teachers, school psychologists, & speech-language pathologists

Educators in Preparation

Educators in Practice

Students

Practicing teachers, school psychologists, speech-language pathologists, literacy specialists, & administrators

**SYNERGY
IN THE
OVERLAP**



Literacy Bridges Website

LiteracyBridges4KS.org

Educators in Preparation

On-Demand Learning Library

Simulation Lab Access

Educators in Practice

On-Demand Learning Library

Simulation Lab Access

Virtual Communities of Practice Menu and Registration

Virtual Coaching Registration and Platform

Students & Families

Request for Assessment or Intervention Services

Afterschool and Summer Camp Registration

Request for Consultation and Literacy Plan Support

Other

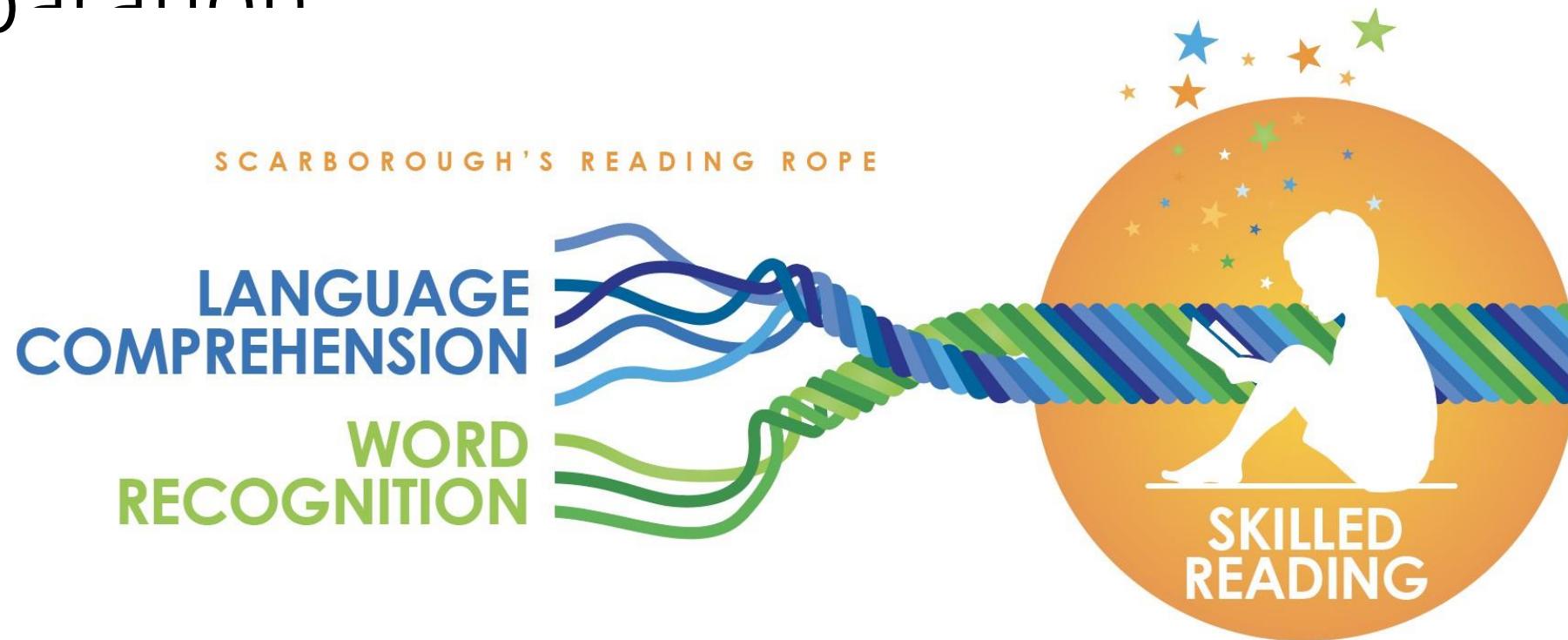
Summer Literacy Institute Registration

Quality Assessment & Program Effectiveness

Science of Reading Resources & Practice Guides

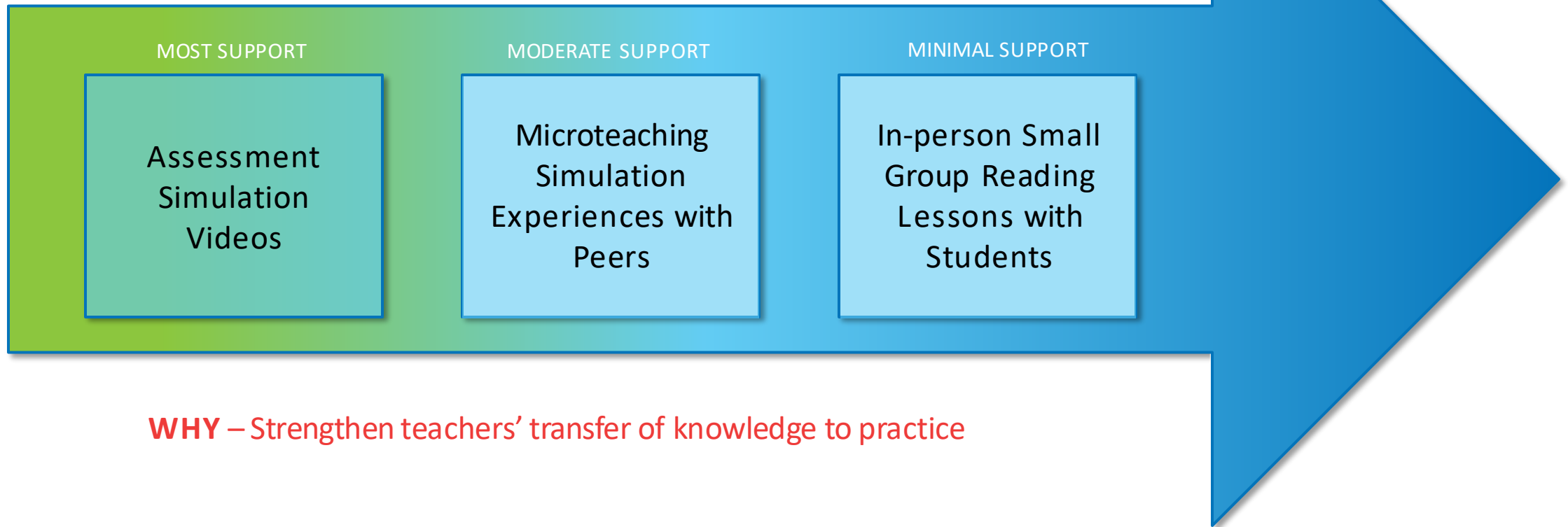


Established Approach for Educators in Preparation



Enhancements to Teacher Preparation

Literacy Bridges
Simulation Lab

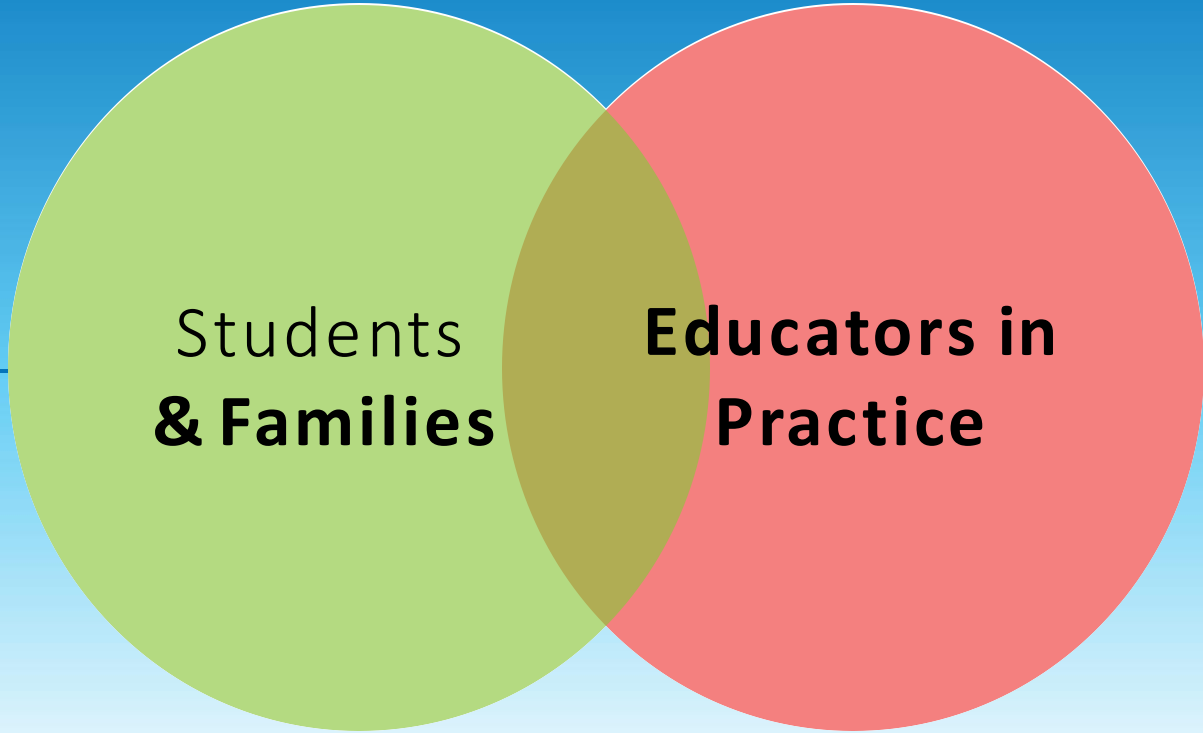


WHY – Strengthen teachers' transfer of knowledge to practice





Grades 4-12



Students
& Families

Educators in
Practice

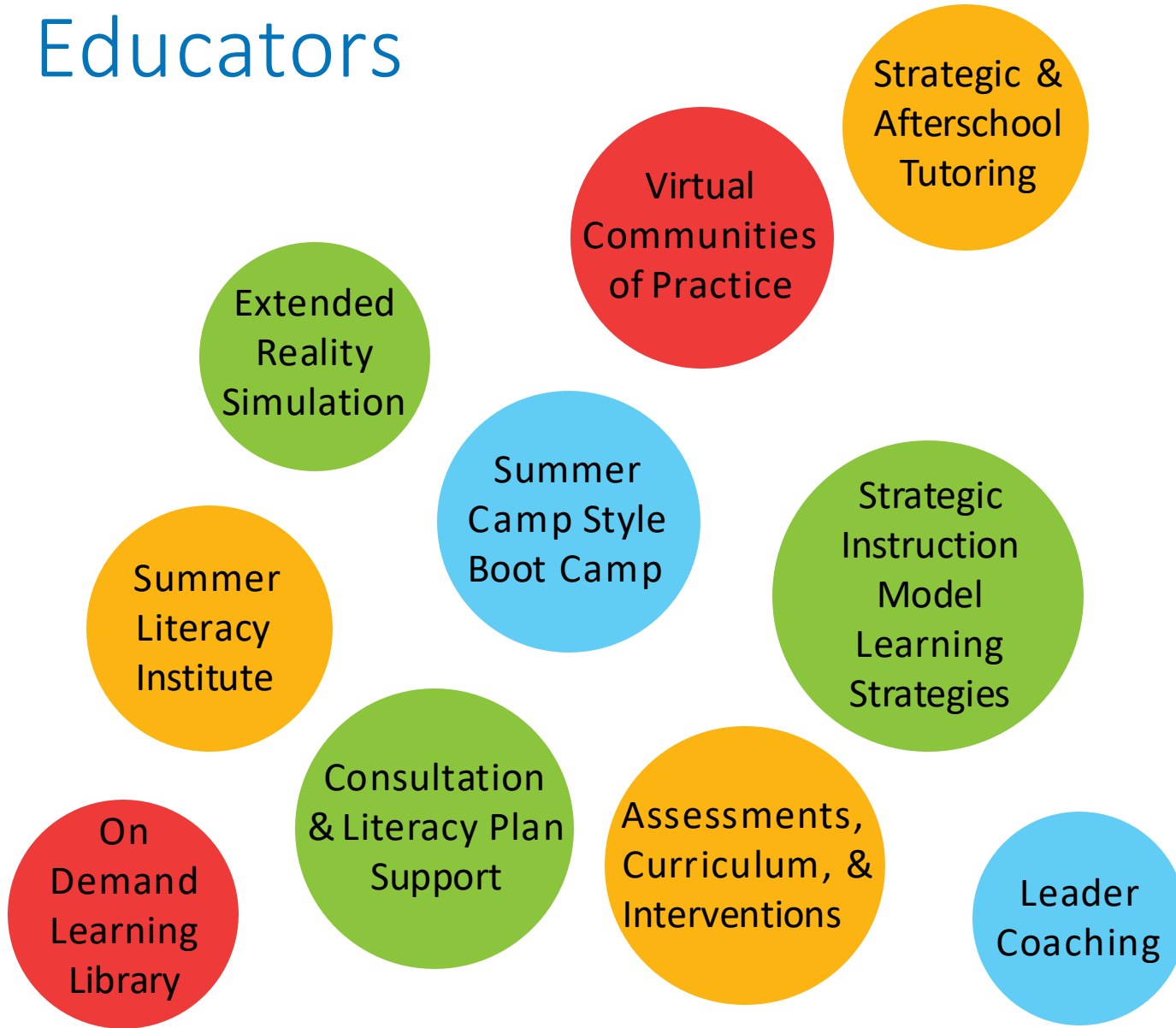
Preschool to Grade 3

KU | Center for Research
on Learning

 **Juniper Gardens
Children's Project**
University of Kansas Life Span Institute



Enhancements for Educators



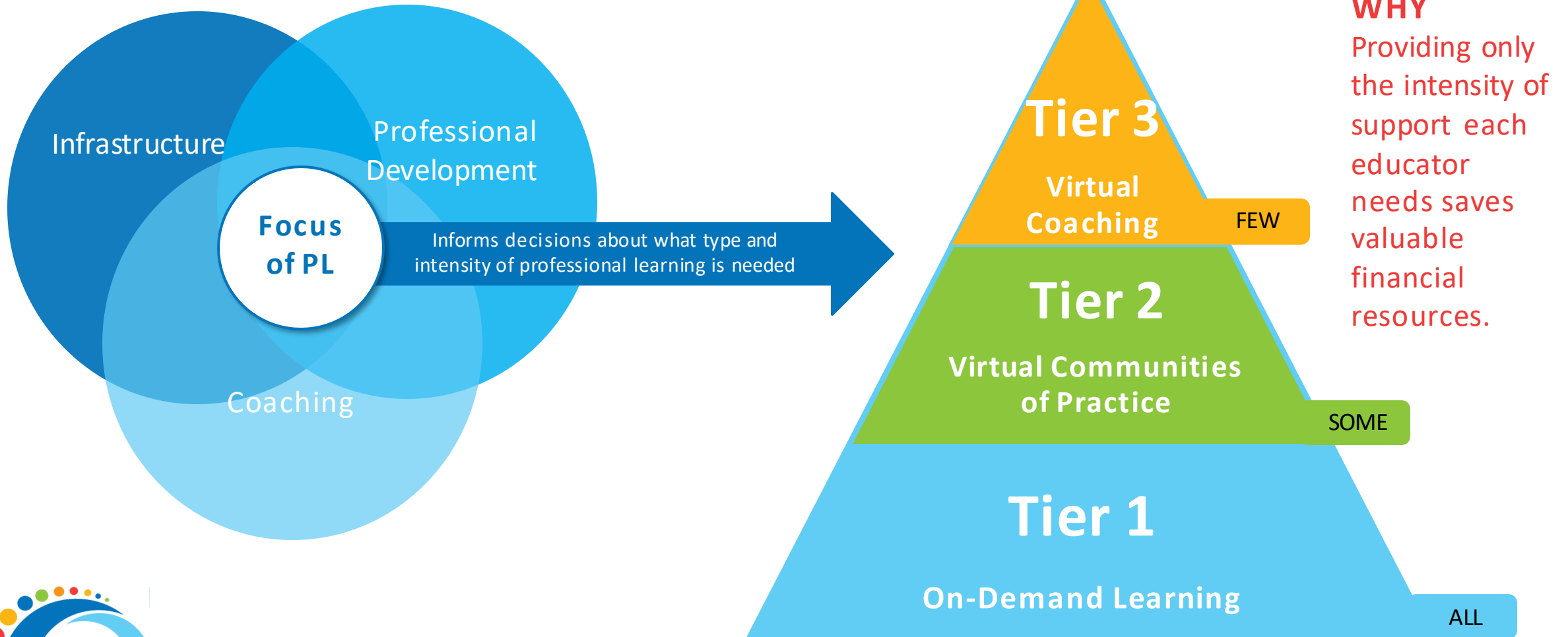
WHY – Educators will have varied needs, schedules, and interests

WHY – Technology can be leveraged to expand reach without expanding the cost

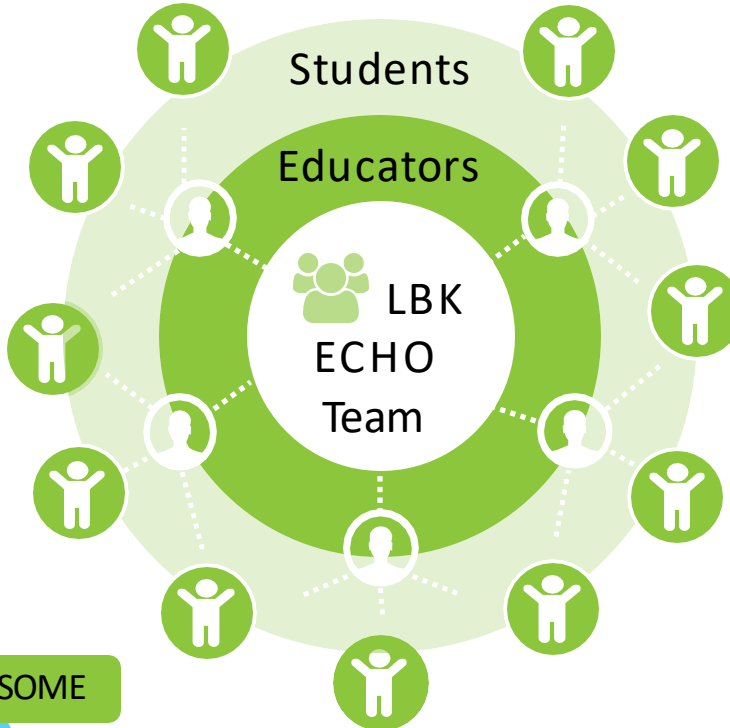
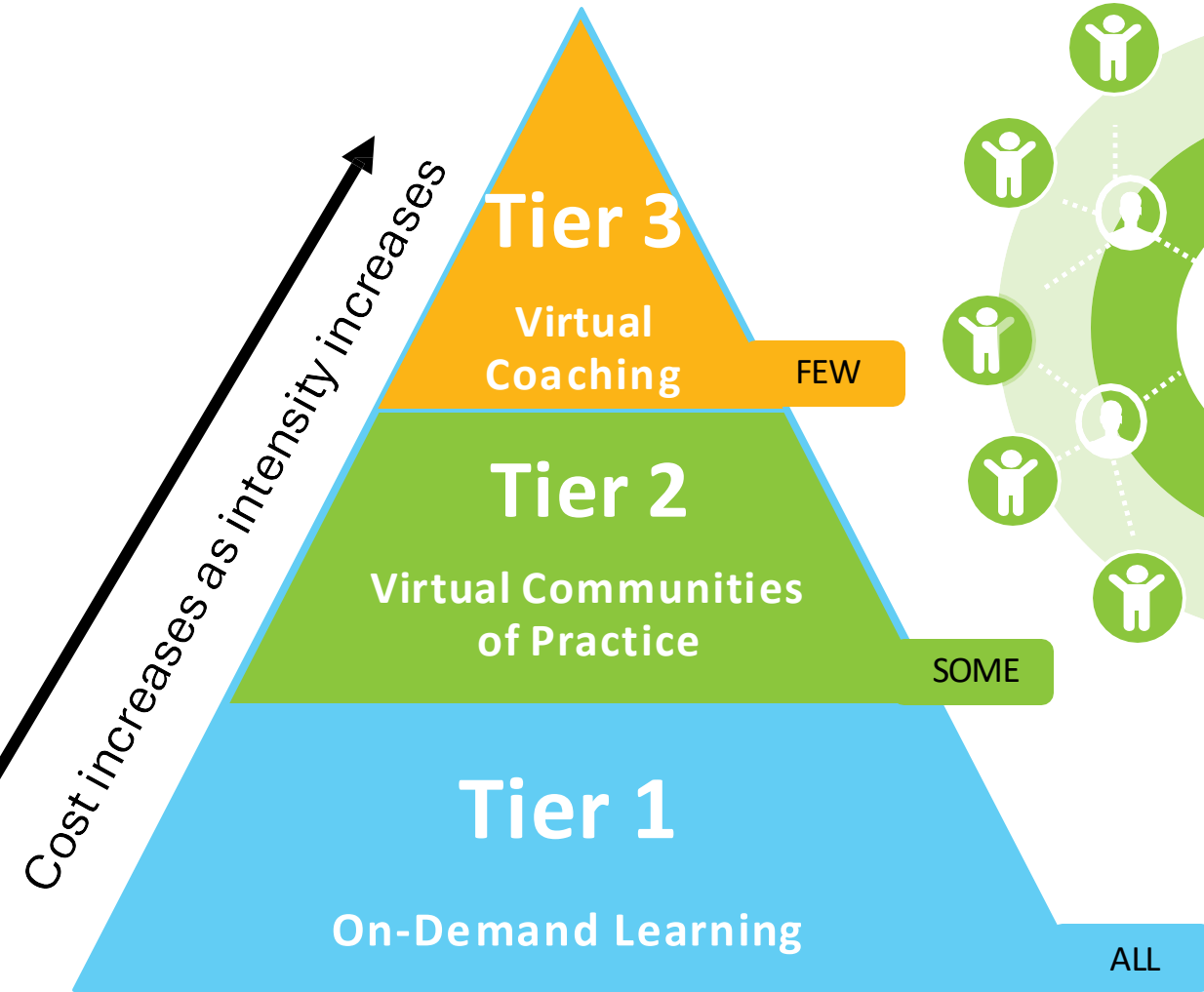


Adaptive Professional Learning Model

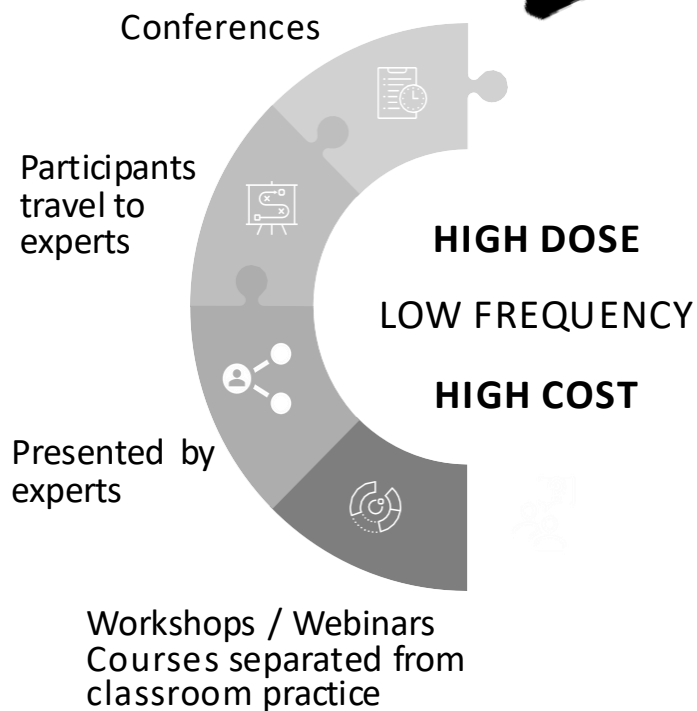
Three Tiers of Professional Learning



Hub & Spokes Models

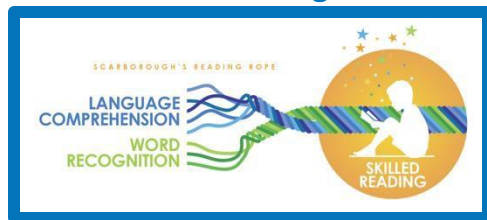


Traditional Training

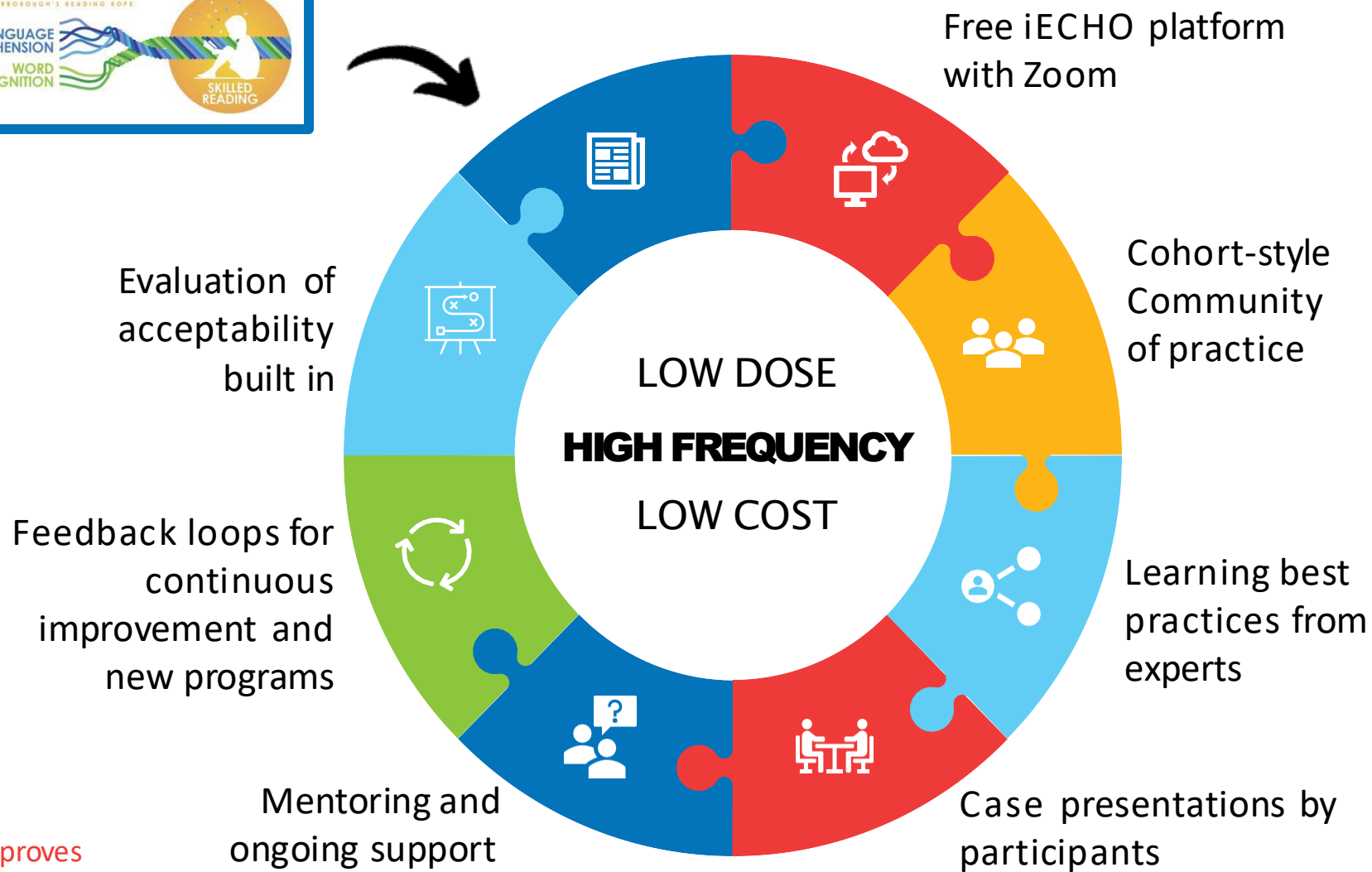


WHY - Only 10-15% of teachers implement strategies learned through traditional training. Implementation improves with modeling, practice, and feedback, but 90% uptake is achieved when ongoing mentoring is added.

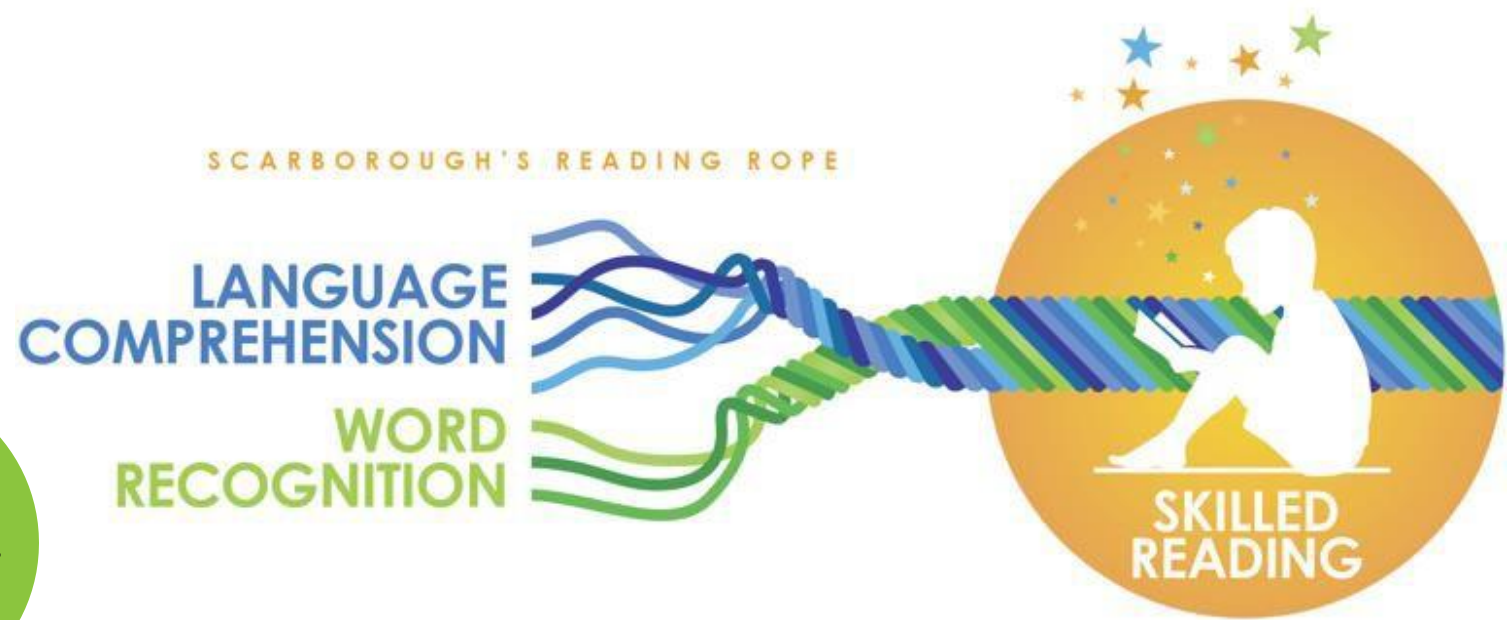
Science of Reading Content



Tier 2 Virtual Community of Practice ECHO Model



Direct Services to Students



WHY - We serve a diverse student population, and they will have different needs. We need to offer flexible services to augment what schools are already doing. Importantly, services must address both word recognition and language comprehension.



Outreach: Existing and Future Partnerships



WHY - Our outreach will strengthen community engagement around the common goal of helping children learn to read and enhance support networks for families.



Quality Assurance System

In collaboration with key stakeholders and program coordinators, a logic model will be created to define and measure short-term and long-term outcomes.

These data will be used to make decisions about the initiatives developed and ongoing improvements.



Thank you!

Educators in Practice & District Programs/ Support

Delivery of Professional Learning and Coaching Support

**Grades P-3:
Juniper Gardens
Children's Project**

**Grades 4-12
Center for Research
on Learning**

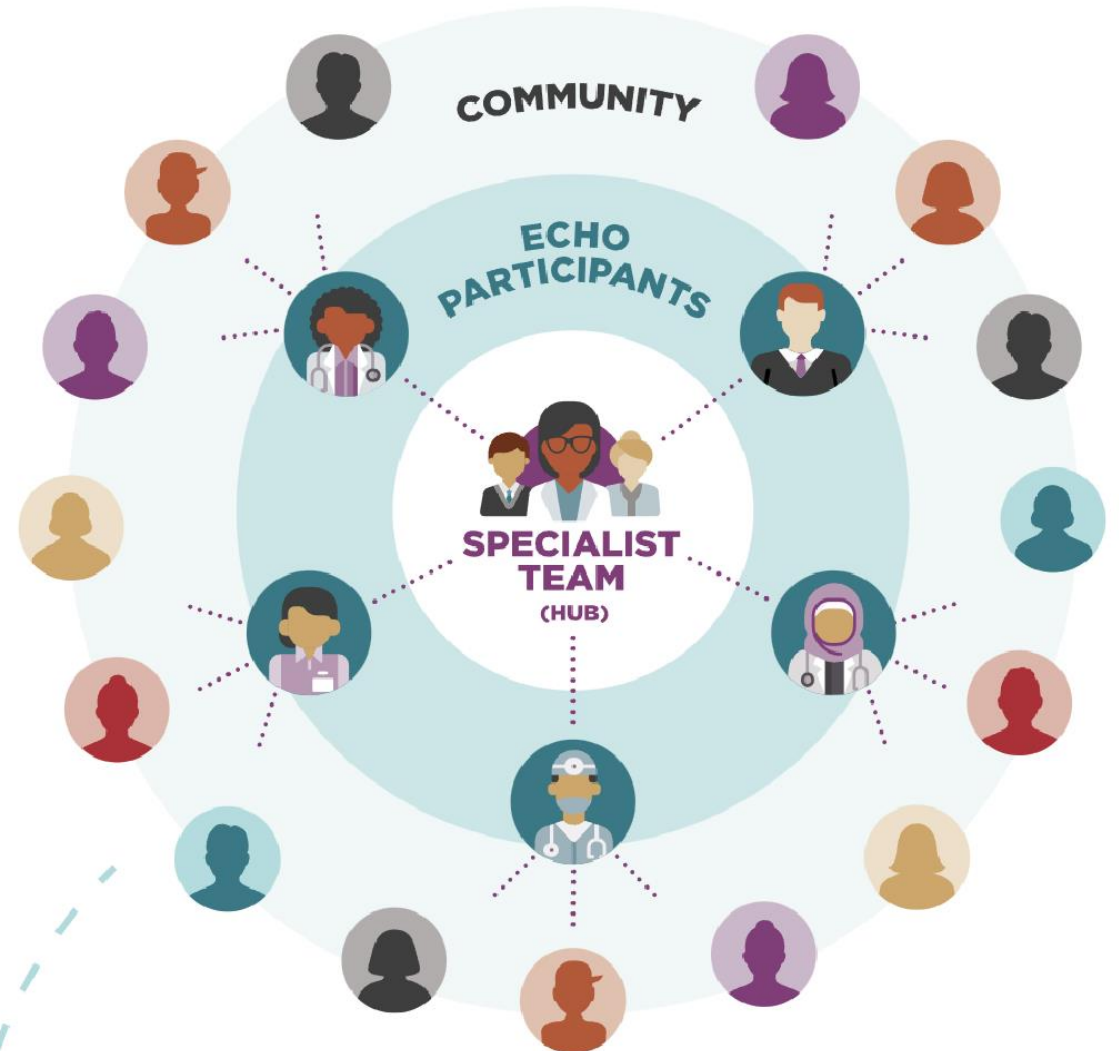


Session Structure



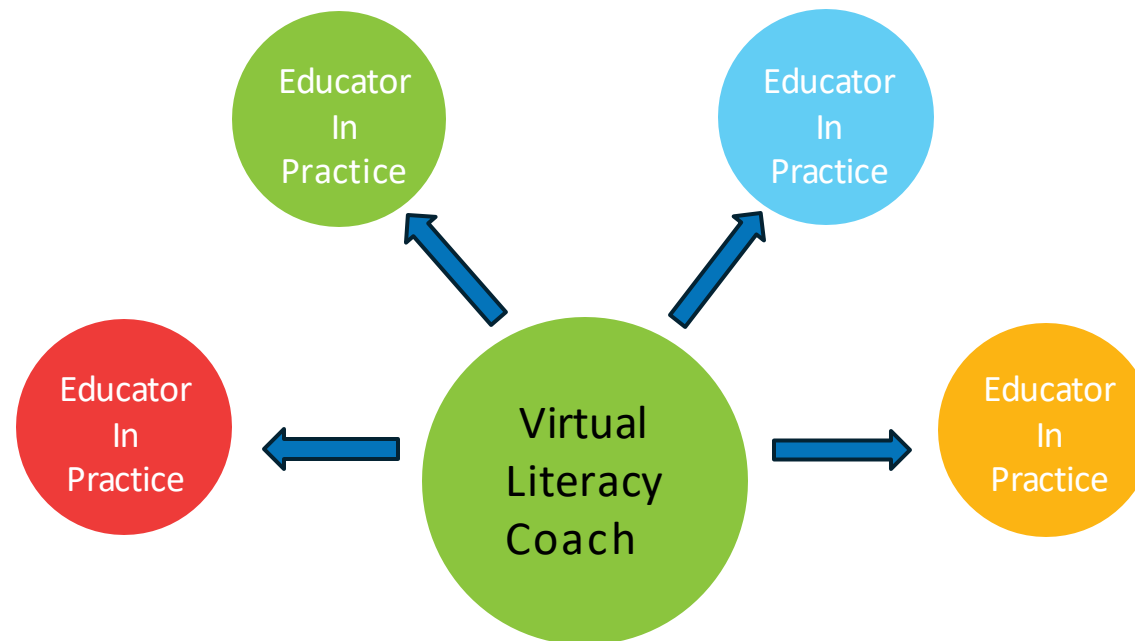
* An ECHO session typically lasts **1 to 1.5 hrs**

All Teach, All Learn



Virtual Communities of Practice and Virtual Coaching

- VECTOR virtual coaching model (created at KU)
- train a cadre of virtual literacy coaches
- one-on-one coaching with P-12 classroom teachers

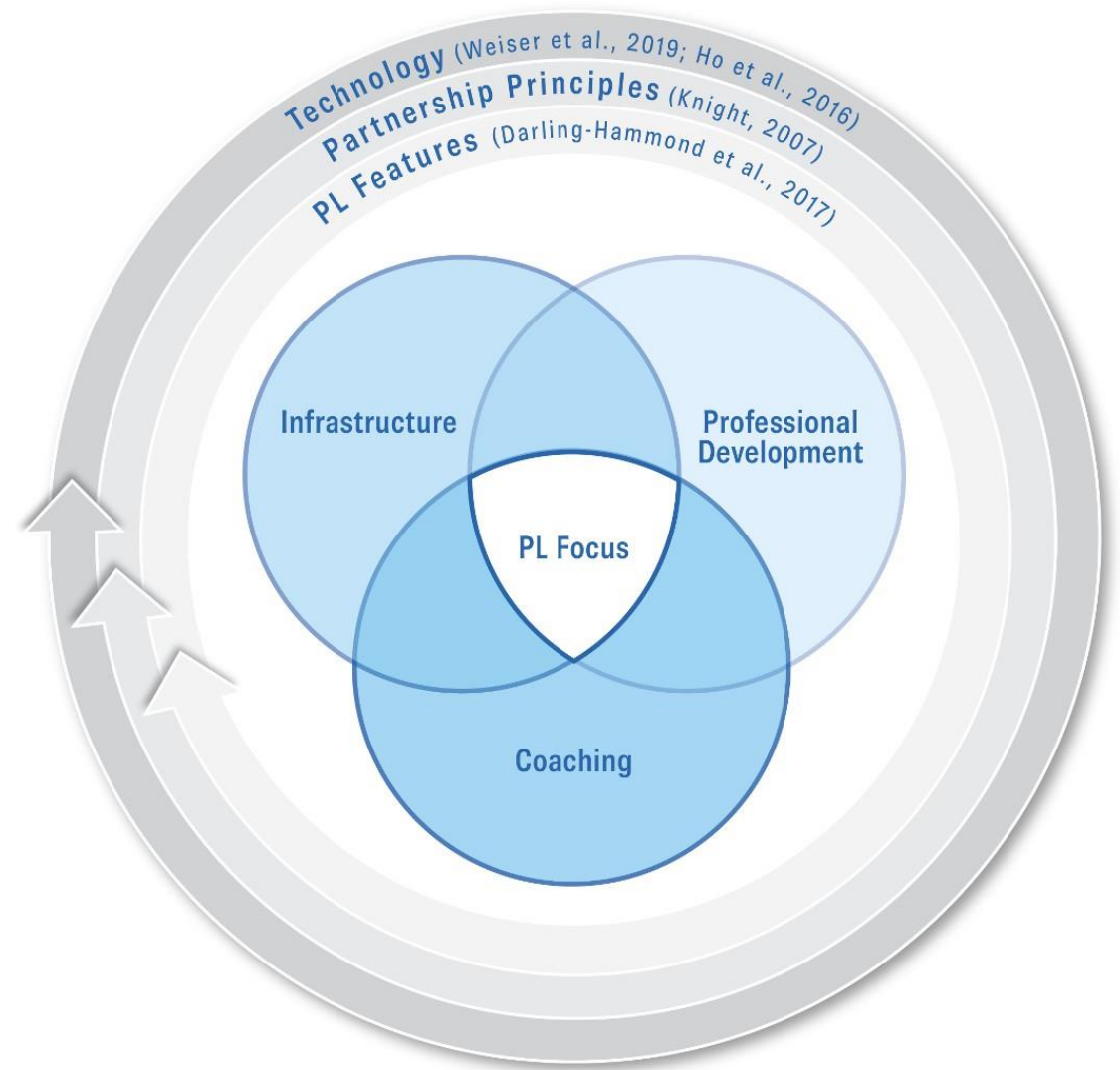


P-12 Adaptive Professional Learning/ Coaching

Literacy Bridges for Kansas will use an *Adaptive Professional Learning Model*.

On-demand learning will be a key part of the APLM.

Assisting with development of literacy plans and structuring literacy supports within individual districts.



Proposed Enhancements to Educators in Practice & District Programs/ Support

- Three-tiered model for professional learning and coaching
- Simulations for in-service educators available in Literacy Bridges Simulation Lab
- Strategic Instruction Model (SIM) is an evidence-based literacy collection of learning strategies and teaching routines. Literacy Bridges will make SIM available to in-service teachers
- Specialty curated assessment, curriculum, and intervention tools
- Literacy Bridges website and on-demand professional learning
 - Podcasts, videocasts
- Summer Literacy Institute
- Summer camp style boot camp

