

Western Kansas Center for Literacy Excellence (WKCLE)

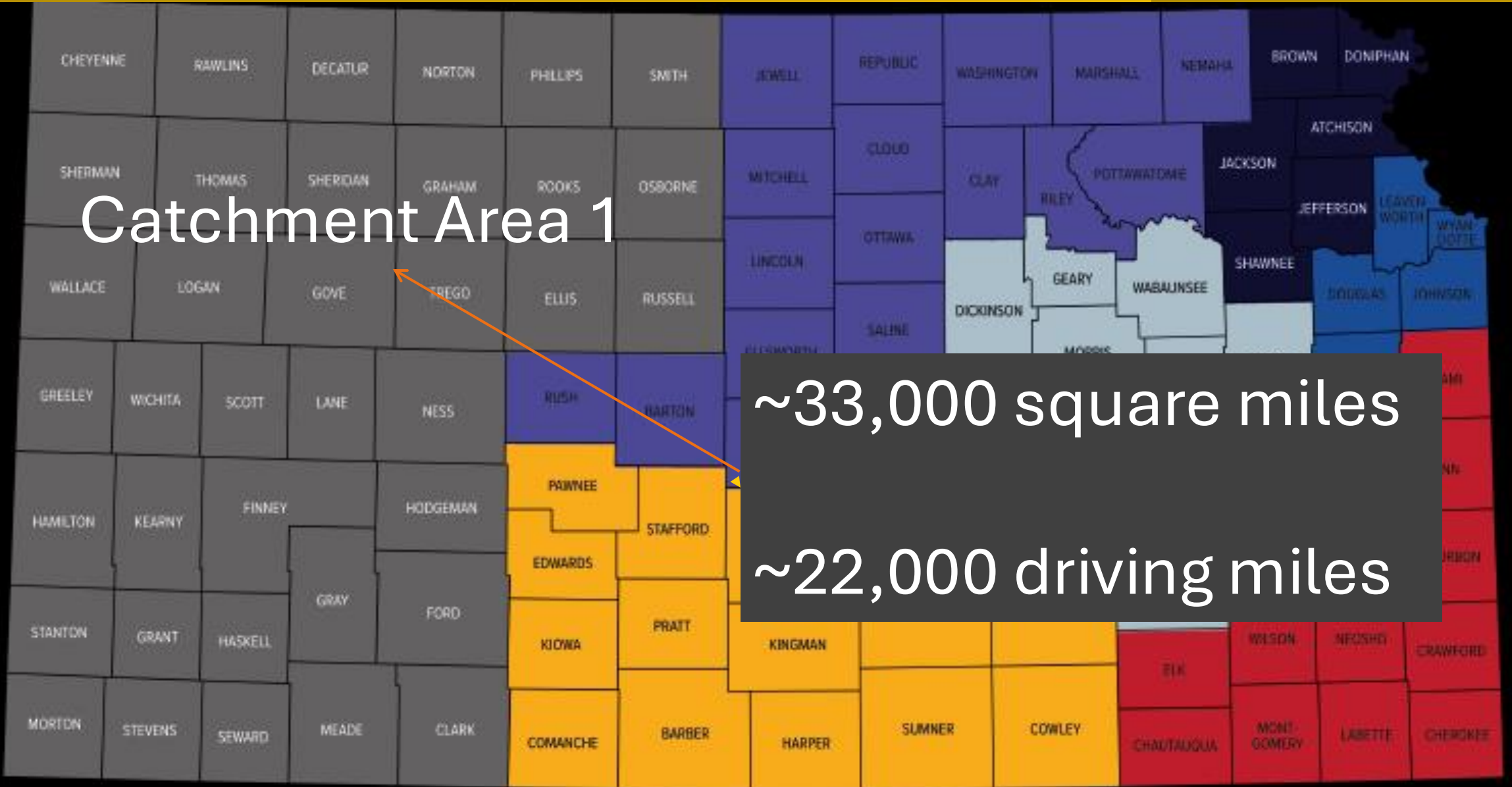
Paul Adams, Dean College of Education

Fort Hays State University

Catchment Area 1

~33,000 square miles

~22,000 driving miles



Why Fort Hays State University?

- Strong partnerships and affiliations across the region
- Experience in working with rural schools
- Strong field-based component with preservice teachers working in schools across the region to provide literacy assistance
- Greatest number of teacher vacancies in Kansas are in School Board District #5
 - specifically: Elementary (205), SPED (108), and ELA (47)
- Resources and external assistance is needed – but the need varies across the region from teacher training needs, how to teach literacy to ELL, non-ELA/Elementary training, “LETRS 2.0”, and direct work with families and parents

Current FHSU Work

- FHSU Language and Literacy Institute (<https://www.fhsu.edu/tiger-read/>)
- Professional and Continuing Education
- LETRS Training
- Science of Reading adapted curriculum in TE, AEP, SLP, School Psychology, and English
- Young Readers Conference
- AmeriCorps Grant (pending) to train and deploy community literacy volunteers

The screenshot shows the website for the FHSU Language and Literacy Institute. At the top, there is a navigation bar with the university logo and links for Students, Faculty & Staff, Alumni, Visit, Give, Directory, News, and @FHSU. Below this is a secondary navigation bar with links for About, Academics, Admissions, Athletics, International, Online, and an Apply button. The main heading is "FHSU Language and Literacy Institute" with a breadcrumb "Home / FHSU Language and Literacy Institute".

On the left side, there is a "Language and Literacy Institute Menu" with links for "About Us", "Request Info", and "Resources". Below this is a contact box for the "FHSU Language and Literacy Institute" with the address "507 Elm, Hays, KS 67601", phone "(785) 628-4683", and email "sebmiller@fhsu.edu".

The main content area features a section titled "FHSU Language and Literacy Institute" with a paragraph: "The FHSU Language and Literacy Service Institute in Partnership with Hays Masonic Lodge 195 provides free in-person and virtual literacy tutoring and English as a second language in-person lessons to adults and children of all ages. Providing one on one support, the Language and Literacy Institute tutors use evidence-based methods to enhance and advance literacy skills for struggling students, including those with dyslexia." Below this is a "What We Provide" section with a bulleted list: "Explicit, systematic instruction in phonics", "One on one tutoring", "Research tested strategies based on Orton-Gillingham", "Use of Reading Horizons software", "Professionally trained tutors and educators", "Customized lessons and instruction", and "Convenient after school hours".

Next is a "Why We Do It" section with a bulleted list: "According to the U.S. Department of Education, about 54% of U.S. adults -130 million people-read below a sixth-grade level with many living in poverty." and "By teaching students using phonics and the science or reading, struggling readers can be taught to successfully read, leading to a lifetime of success." At the bottom of the page, there is a navigation bar with links for About, Academics, Admissions, Athletics, Student Life, and Online, followed by buttons for Apply, Request Info, Visit, and Give. A footer contains links for Help & Concerns, Accessibility, Ideas to Improve, and Freedom of Expression, along with social media icons and contact information: "600 Park Street, Hays, KS 67601-4099, 785-628-FHSU (3478)".

Vision – 5 Key Areas of Specialization

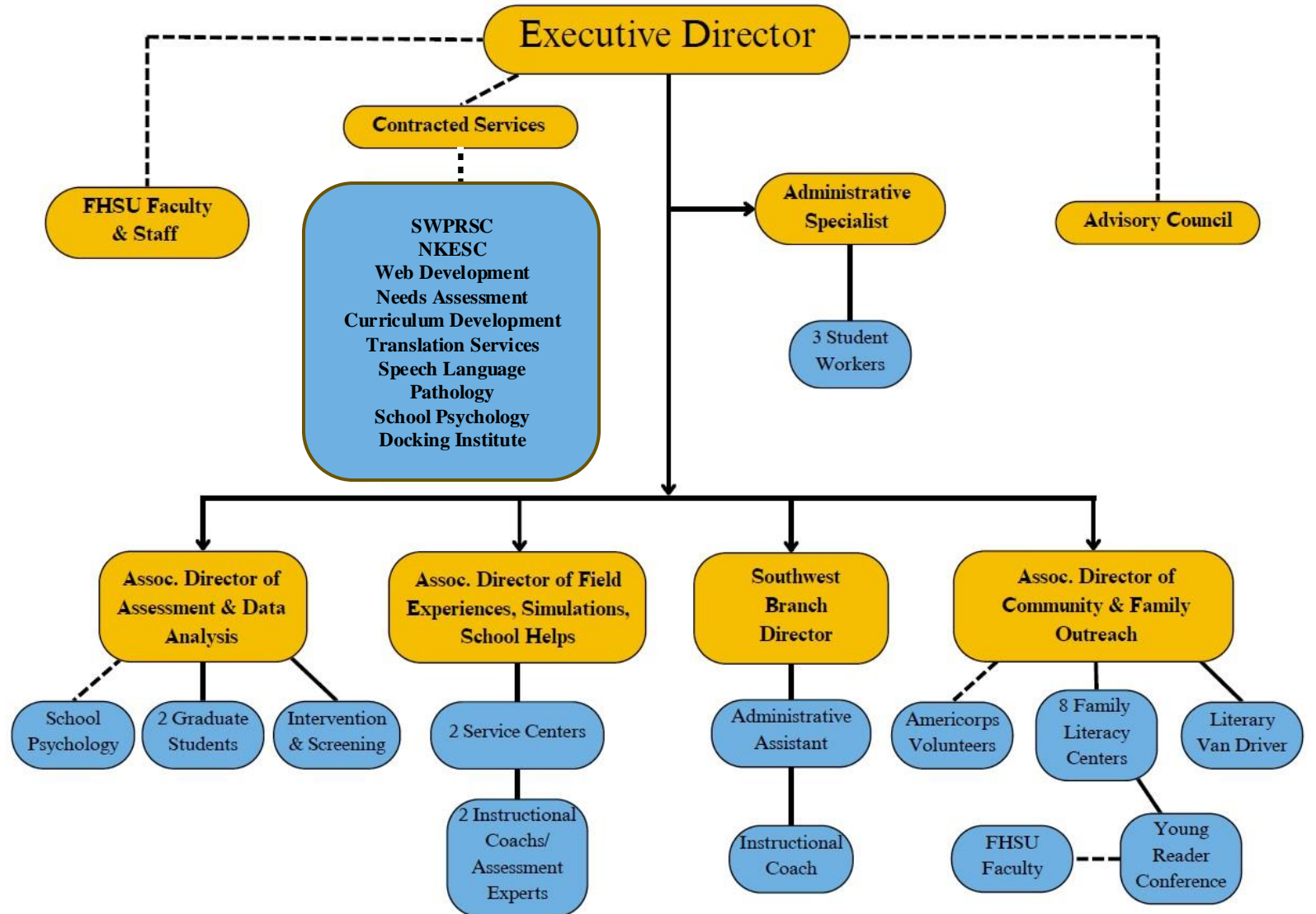
1. Coherent and consistent services through a network of providers across the catchment area coordinated by the main WKCLE office
2. Focus on community & family literacy by building community awareness about literacy
3. Tutoring and assessment support both virtually and face-to-face
4. Work with schools to develop professional development opportunities, targeted simulations, and curriculum support
5. Engage preservice elementary teachers and graduate students (i.e., reading specialists, SPED, speech language pathologists, school psychologists) in center activities and simulations

Achieving the Vision: The WKCLE Network

- Advisory Committee during Start Up period
- Fact Finding and Community Discovery
- Regional Literacy Network for Community & Family Literacy
- Literacy Van
- AmeriCorps Reading Partners
- Simulations and Coaching
- Essential Partnerships and Contracts (i.e. Service Centers)

Structure

Western Kansas Center for Literacy of Excellence Organizational Chart



Simulation Experiences

- There is extensive use of microteaching occurring within the program
- Preservice teachers are monitored during field experiences; both virtual and face-to-face to receive feedback
- Work in the Community & Family Literacy Network site is an applied learning experience for face-to-face students
- An associate director will arrange a placement and feedback to assure a) preservice teachers are in a school where they can work under an experienced teacher or b) have supervisor expertise
- Current teachers, needing assistance, can request training and practice through WKCLE
- Explore an AI system for coaching, assessment, and tutoring

Advisory Council

- Work guided by an Advisory Council comprised of University areas engaged in literacy, service centers, SPED Cooperatives, community groups, independent college, and community colleges

Preservice Educators

- Current students are passing the required exams
- FHSU has implemented the Science of Reading Requirements stated in SB 438 and has curriculum beyond the minimum
- Data reports to KSDE indicate we are meeting expectations
- We are developing a local Professional Development School model with USD 489 for internships and tutoring
- We have been providing, to a limited extent, virtual tutoring services through the FHSU Language and Literacy Institute
- Additionally, we have placed Science of Reading in the curriculum of SLP, ELA, School Administration, School Psychology, SPED, T2T, and Reading Specialist

In-Service and District Support

- We have a track record of meeting with districts and responding to their needs: e.g. Elementary Transition to Teaching, Sponsored Student Teaching, Teacher Workshops, Future Teachers Day, Career Days.
- Currently we work directly with school districts requesting LETRS Training
- We have offered secondary science of reading training.
- For micro-credentialing, we have an active partnership with Phillips Fundamental Learning Center (PFLC), We have shifted the market to paras and administrators. This partnership also includes pathways to receiving graduate credit. We have initiated discussions on future collaborations.
- Currently meeting with a school district to look at non-ELA faculty (middle and secondary) to develop training for those not directly identified in SB 438.

Personnel and Qualifications

- We are CAEP accredited at the current time. During our last visit we had no areas for improvement
- We have faculty trained in LETRS
- Hires for WKCLE will need to have completed literacy training and have experience in schools

Quality Assurance System

- The quality of teacher preparation programs, and advanced programs are covered through our CAEP assurance system, internal program assessments, and KBOR program reviews
- Docking Institute is being contracted for two purposes:
 1. In the Start Up period, community-based fact finding will be done to tailor needs and help determine where to best place “on the ground” resources
 2. The Docking Institute will conduct an annual evaluation of WKCLE. This will encompass all operations and outreach to provide both formative and summative assessment, to ascertain quality and identify areas from improvement with a 360-degree scan of the catchment area.

Timeline

- **Fall 24:**
 - Formation of advisory council
 - Executive Director job description and launch search
- **Spring 25:**
 - Docking Institute Contract initiated for fact finding;
 - Hire executive director; subsequent hiring led by executive director
 - FHSU Language and Literacy Institute will develop an essential operations guide for expansion and enhancement for the regional literacy network sites.
 - Outfit Literacy Van for summer work
 - Identify 3 districts to work directly with in collaboration with Service Centers
 - Contract community & family literacy sites
 - Contract Southwestern Branch
 - Set annual goals and metrics for FY 26

SCIENCE AND MATHEMATICS EDUCATION INSTITUTE **MAKERVAN**

Programs for K-12th grade:

Squishy Circuits– Use conductive and insulating dough to learn the basics of electrical circuits.

Stomp Rockets– Make paper rockets and use a self-constructed launch pad to launch the rockets.

Slime– Learn about the chemical reactions that make that squishy, gooey, rubbery slime!

Paper Roller Coasters– A fun way to learn the physics of energy and motion, as well as the importance of the engineering design process.

Thermal Imaging– Using the heat given off by an object to produce an image. Programs range by design according to academic need.

Robotics and Coding–

- Little bits
- LEGO robotic kits
- Bristle Bots
- Scribble Bots
- Ozobots
- Edison Robots

MORE programs listed on
www.fhsu.edu/smei

MakerVan Activities for all ages:

3D Printing– 3D Design and print 3D objects

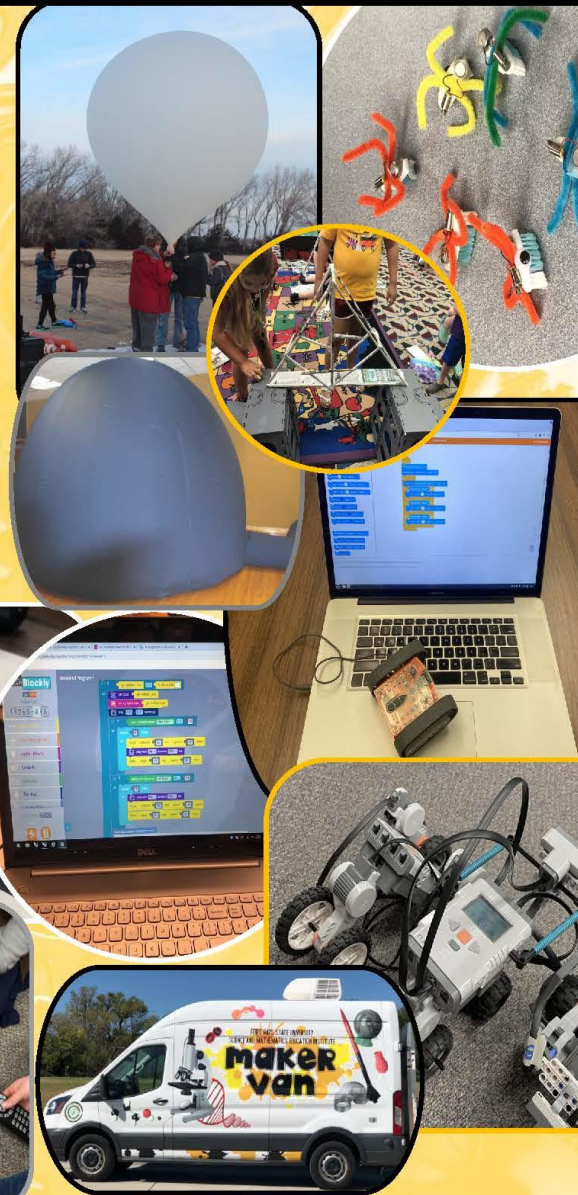
Planetarium– A portable digital planetarium with inflatable dome to discover the universe.

High Altitude Balloon– Launch from your school!

–Programs range by design according to academic needs.

We can custom design programs,
please contact 785-628-4538 or
gglaunchbaugh@fhsu.edu.

MakerVan mileage cost varies by distance,
number of participants and program.



For more activities,
visit
www.fhsu.edu/smei

Fort Hays State University is dedicated to providing quality educational opportunities in Science, Technology, Engineering, and Mathematics. Our Maker Van compliments the purpose of FHSU Makerspace which encourages youth to explore STEM in a fun, relaxed environment.

NONPROFIT ORG.
U.S. POSTAGE
PAID
FORT HAYS, KS
PERMIT NO. 4



SCIENCE AND MATHEMATICS EDUCATION INSTITUTE

MAKERVAN

Science Outreach
Programs & Activities



CONTACT:

Mr. G.G. Launchbaugh
MakerSpace/MakerVan
gglaunchbaugh@fhsu.edu
785-628-4638

Dr. Paul Adams
Dean, College of Education
padams@fhsu.edu
785-628-6344

FORT HAYS STATE UNIVERSITY
SCIENCE AND MATHEMATICS
EDUCATION INSTITUTE

FORT HAYS
UNIVERSITY
Forward. Ambitious. Unafraid to study.
SCIENCE & MATHEMATICS INSTITUTE
800 PHS UNIVERSITY
FORT HAYS, KS 67601-4099



FORT HAYS STATE
UNIVERSITY

www.fhsu.edu/smei (785) 628-4638

Developing Curriculum Innovations

- Building Essential Skills Together (BEST) – a competency-based elementary teacher program that will dovetail with the intent and practices of the Registered Teacher Apprenticeship. FHSU was given the go ahead to develop this innovative program.
- Direct Entry into Special Education – FHSU investigating the process to purpose and develop this as an innovative program.
- The Reading Specialist Program in collaboration with SPED and SLP are developing a certificate program for advanced training.
- SLP provides and is developing several professional development modules to meet school needs through the Professional and Continuing Education arm of FHSU.
- School Psychology is adapting curriculum and looking at modules for teachers and SPED Cooperative professional development.

Contracted Services

- Translation Service
- Phillips Fundamental Learning Center
- Docking Institute for initial community fact-finding and on-going project evaluation
- Curriculum development in TE, AEP, SLP, School Psychology, etc. for delivery through the new Professional and Continuing Development arm of FHSU guide by fact finding and advisory council
- Experimental AI Simulation Laboratory