

Update on Investment in Research Board of Regents



Bonnie Rush
Dean, College of Veterinary Medicine
Kansas State University

Distribution of Targeted Excellence Funds: 2013-2022

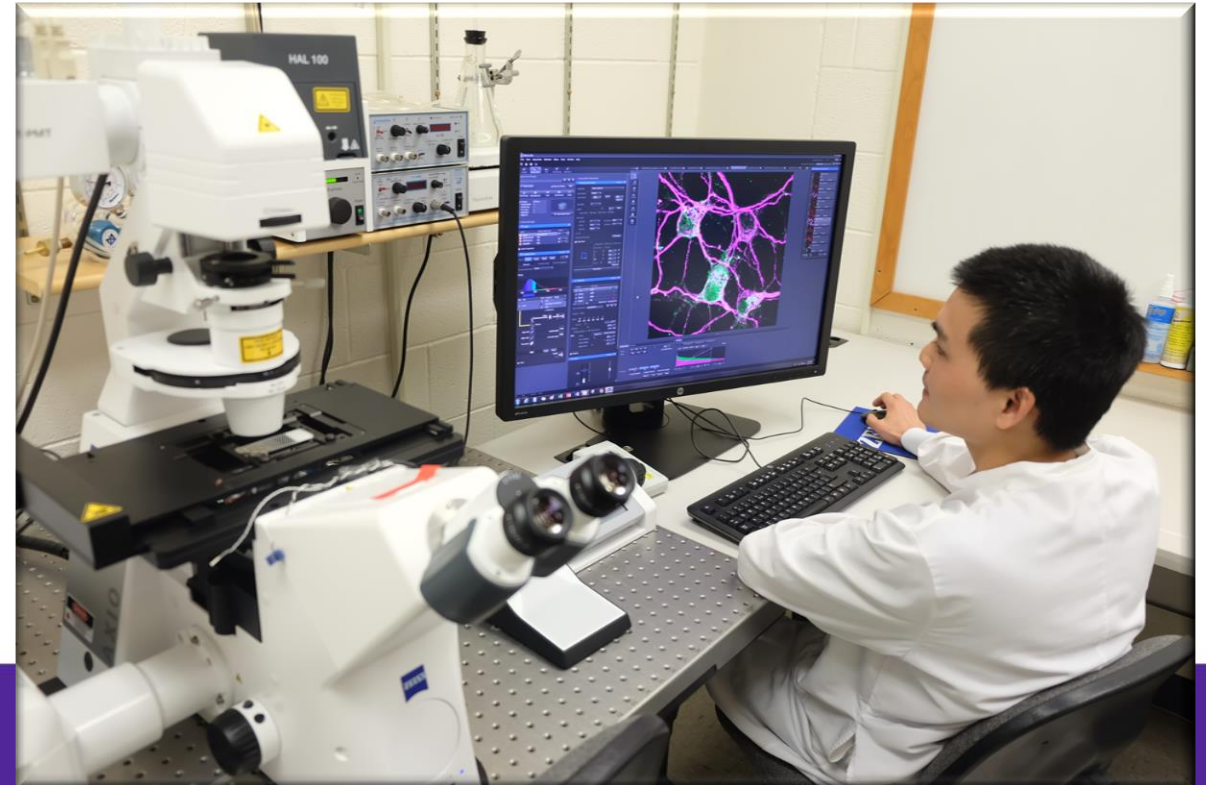


| | | | | | | | | | | Projected FY22 |
|----------------------------|------------------|------------------|------------------|------------------|------------------|------------------|------------------|------------------|------------------|-------------------|
| Targeted Enhancement Funds | FY13 | FY14 | FY15 | FY16 | FY17 | FY18 | FY19 | FY20 | FY21 | |
| Research Faculty | 189,773 | 220,113 | 1,908,468 | 1,991,665 | 1,848,491 | 1,981,360 | 3,504,677 | 3,874,354 | 4,023,200 | 4,100,200 |
| Research Support | 921,380 | 763,737 | 1,546,737 | 2,156,298 | 2,254,690 | 2,566,450 | 951,135 | 749,246 | 916,347 | 627,733 |
| Facilities Renovation | 3,888,847 | 4,015,532 | 1,445,000 | 417,463 | 428,107 | 0 | 302,116 | 362,335 | 0 | 0 |
| Graduate Program Support | 0 | 0 | 100,000 | 275,000 | 301,400 | 284,878 | 191,134 | 14,065 | 27,720 | 30,000 |
| Total Expenditures | 5,000,000 | 4,999,382 | 5,000,205 | 4,840,426 | 4,832,688 | 4,832,688 | 4,949,062 | 5,000,000 | 4,967,267 | 4,757,733 |

Research Metrics

| | 2015 | 2016 | 2017 | 2018 | 2019 | 2020 | 2021 |
|--------------------------|--------------|--------------|--------------|--------------|--------------|--------------|--------------|
| Extramural Awards | \$11,458,234 | \$12,137,652 | \$13,829,113 | \$16,143,879 | \$14,522,368 | \$17,837,791 | \$21,215,597 |
| Recovered F&A | \$652,382 | \$853,479 | \$1,061,594 | \$1,489,233 | \$1,512,998 | \$912,419 | \$1,279,165 |
| Manuscripts | 237 | 265 | 258 | 326 | 318 | 341 | 349 |

| | 2020 | 2021 |
|---------------------------|------|------|
| License Agreements | 24 | 8 |
| Patents | 6 | 9 |
| Filings | 37 | 47 |



COVID-19 Research

- SARS-CoV-2
 - Twenty-one grants: \$12,408,555
 - Thirty-four publications
 - Three license agreements
- KSVDL – COVID testing
 - Manhattan campus
 - Regional medical facilities
 - KDHE
 - Variant testing: delta, omicron

New \$3.7 million NIH grant supports collaborative research into COVID-19 treatment

Friday, Aug. 20, 2021



HEALTH AND HUMAN SERVICES

Kansas State University Lab Pivots to Fight COVID-19

Kansas State University's Biosecurity Research Institute, known for its high-tech livestock and food-processing research, is tackling COVID-19, making strides in vaccine development, drug discovery, and more.

July 27, 2020 • Katherine Dynamski, The Wichita Eagle



Shutterstock/rotqiang977

Additional Pathogens of Interest

- Anaplasmosis
- African Swine Fever
- Rocky Mountain Spotted Fever
- Japanese Encephalitis
- Rift Valley Fever
- Yellow Fever
- Emerging zoonotic pathogens

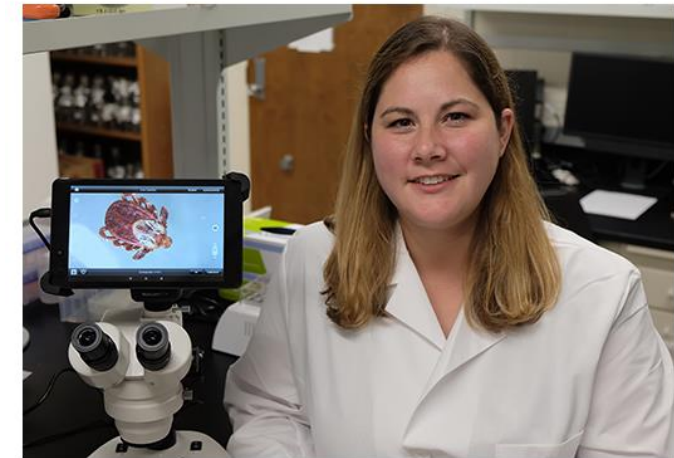
Vet med student receives research fellowship to identify African swine fever virus protective antigens

Monday, July 19, 2021



Researchers target cattle disease with USDA grant

Thursday, April 4, 2019



Graduate Education: Workforce Development

| Enrollment | 2015 | 2016 | 2017 | 2018 | 2019 | 2020 | 2021 |
|------------|------|------|------|------|------|------|------|
| MS | 54 | 62 | 82 | 67 | 70 | 101* | 113 |
| MPH | 67 | 60 | 58 | 68 | 75 | 78 | 77* |
| PhD | 44 | 44 | 48 | 55 | 48 | 48 | 53 |

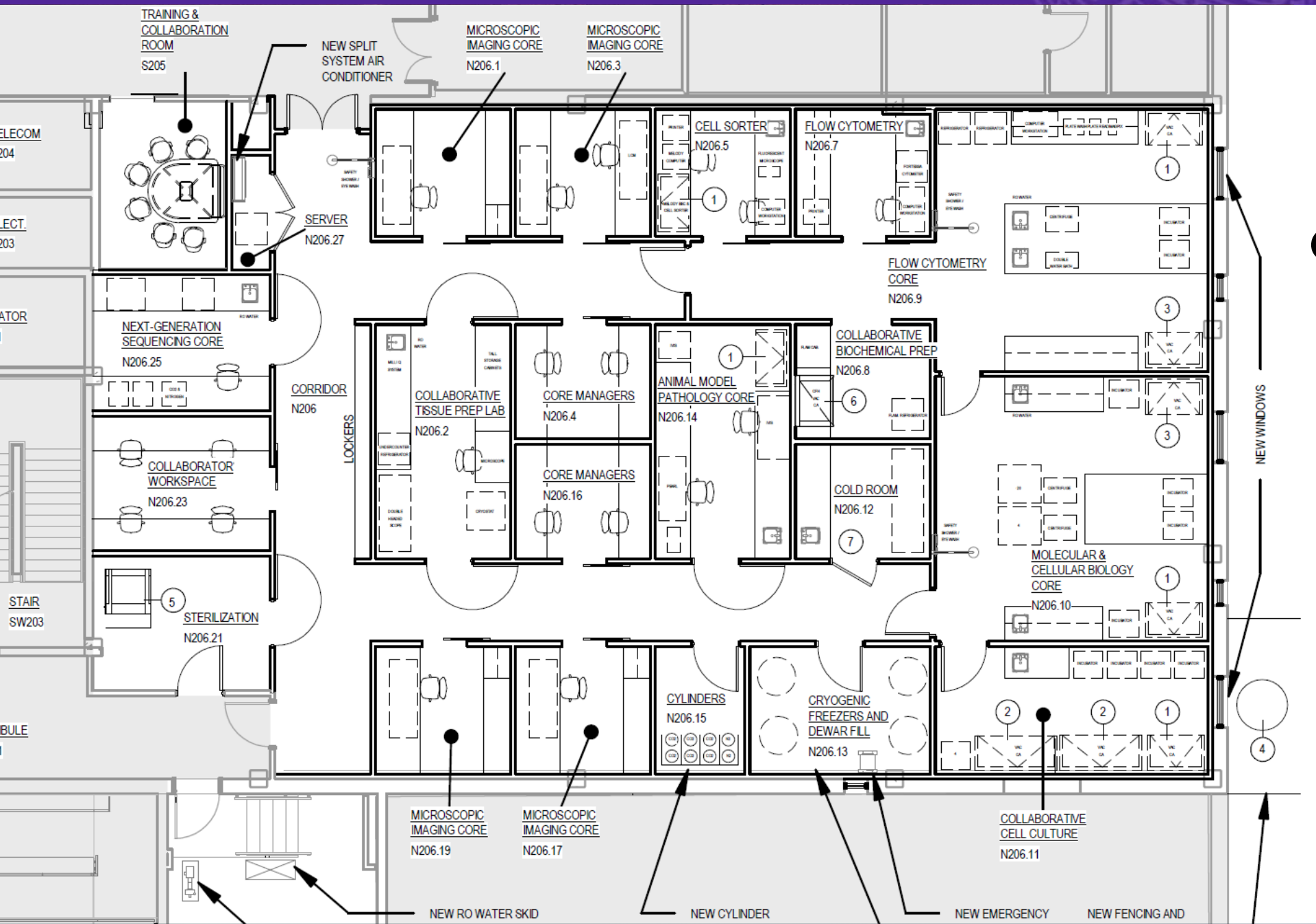
* One-year MS program initiated

** Online MPH approved

USDA NBAF Scientist Training Program

- 9 CVM Graduate Students
- MS, PhD, DVM/PhD
- \$2,824,325 investment





Core Research Facility

NIH C06: \$3.43M

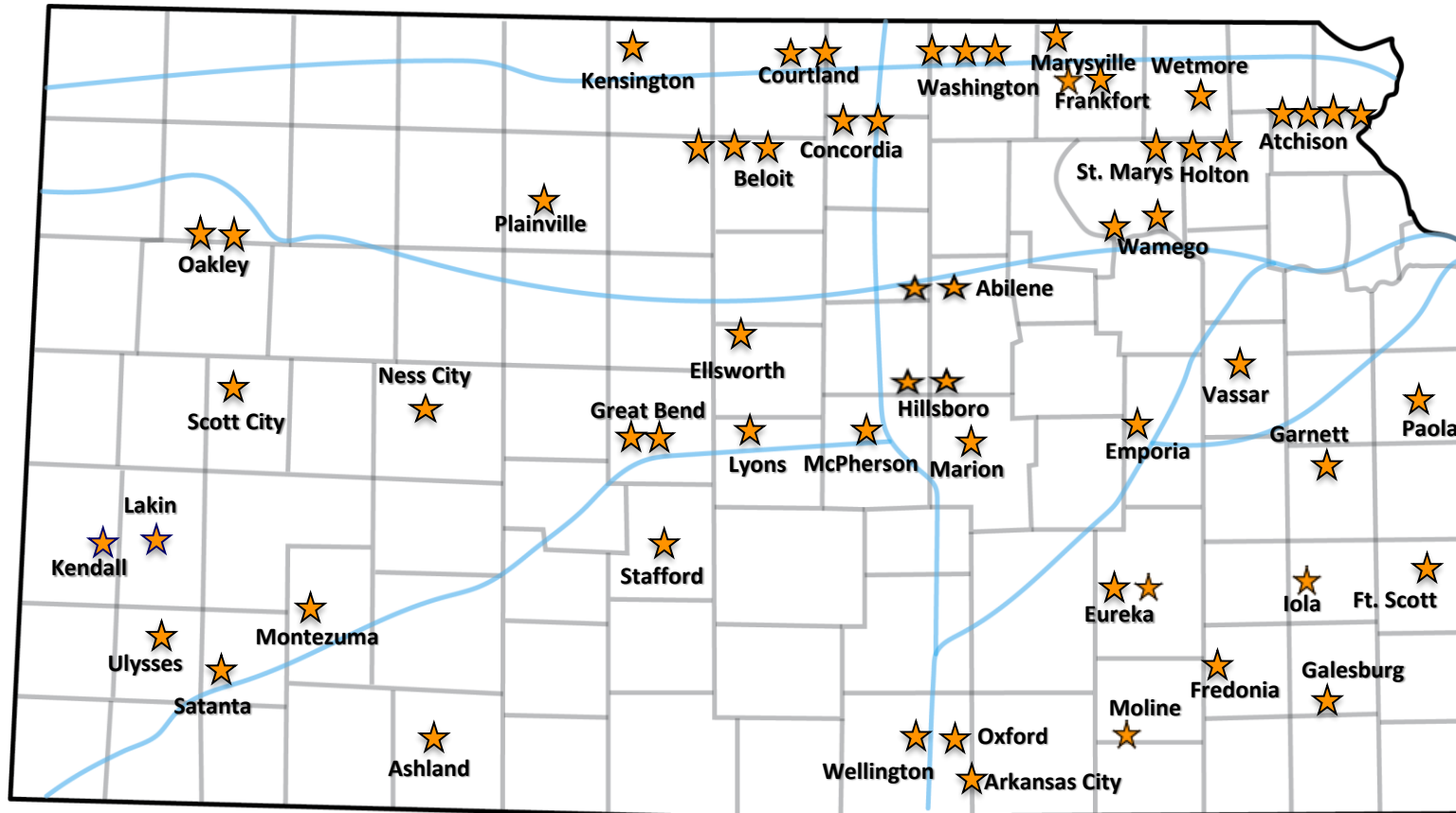
Facility Renovation

2017-2021
103,900 sf: \$32.6M

| <u>Service</u> | <u>sf</u> | <u>\$</u> | <u>Research</u> | <u>sf</u> | <u>\$</u> | <u>Teaching</u> | <u>sf</u> | <u>\$</u> |
|---------------------|-----------|-----------|----------------------|-----------|-----------|------------------------|-----------|-----------|
| Eq Perform | 17,000 | \$3.8M | Toxicology | 1,000 | \$250K | Anatomy | 13,587 | \$5.7M |
| VDL East | 30,000 | \$1.3M | Lab updates | 6,000 | \$1.3M | Testing Center | 981 | \$400K |
| Pharmacy | 1,400 | \$700K | Collaborative | 3,500 | \$700K | Fitness Center | 581 | \$60K |
| MRI | 1,445 | \$3.4M | Core lab | 5,000 | \$3.4M | Clinical skills | 3,000 | \$1.8M |
| Primary care | 4,200 | \$4M | | | | Auditorium | 6,400 | \$4M |
| Livestock | 7,500 | \$1M | | | | Atrium | 1,800 | \$600K |
| | | | | | | Retail | 500 | \$250K |
| Total | 61,600 sf | \$15.4M | | 15,500 sf | \$5.65M | | 26,800 sf | \$12.8M |

Corporate
Revenue
Private
Federal

Rural Scholarship Program: \$400K appropriation 2006-2021



- 80 recipients
- 97% fulfilled(ing) 4 yrs

Beyond 4 years: 94% are still practicing in a qualifying county.
77% remain in the practice of origin.



Exceptional teaching.

Impactful research.

Outstanding service.

Extraordinary graduates.



Pillar 3: Biosecurity/Biodefense

Kansas State University aspires to become the preeminent institute to advance discovery and development.

National Agricultural Biosecurity Center

Biosecurity Research Institute - BSL-3

College of Veterinary Medicine - BSL-2

K-State Veterinary Diagnostic Laboratory - BSL-2 Tier 1 NAHLN facility

NBAF - BSL-3/4

BSL-1 to BSL-4: Discovery and Commercialization

- Lease Space
 - Biologics Development Module (BDM)
 - Non-containment core laboratories
 - Expanded BSL-2 large animal facilities
- Metrics
 - Grants, contract research
 - Graduate enrollment, graduate in-state retention
 - Lease agreements, fee-for-service contracts
 - License agreements, royalties, start-up success

- 2021 NAVLE pass rate = 97% (NA=94%)
- 2021 New graduate employment = 99%

- Addressing Educational Debt
 - Froze tuition - 5th consecutive year
 - Eliminated hidden costs – (\$6,700)
 - Scholarship endowment: \$13.8M ('16) to \$25.6M ('21)

- Kansas Graduates
 - 2019: \$128.3K
 - 2020: \$122.5K
 - 2021: \$101.8K

- Out-of-State Graduates
 - 2019: \$264.8K
 - 2020: \$254.3K
 - 2021: \$236.1K



Veterinary Diagnostic Laboratory

Develop. Defend. Deliver.

Veterinary Health Center

To Discover. To Teach. To Heal.

